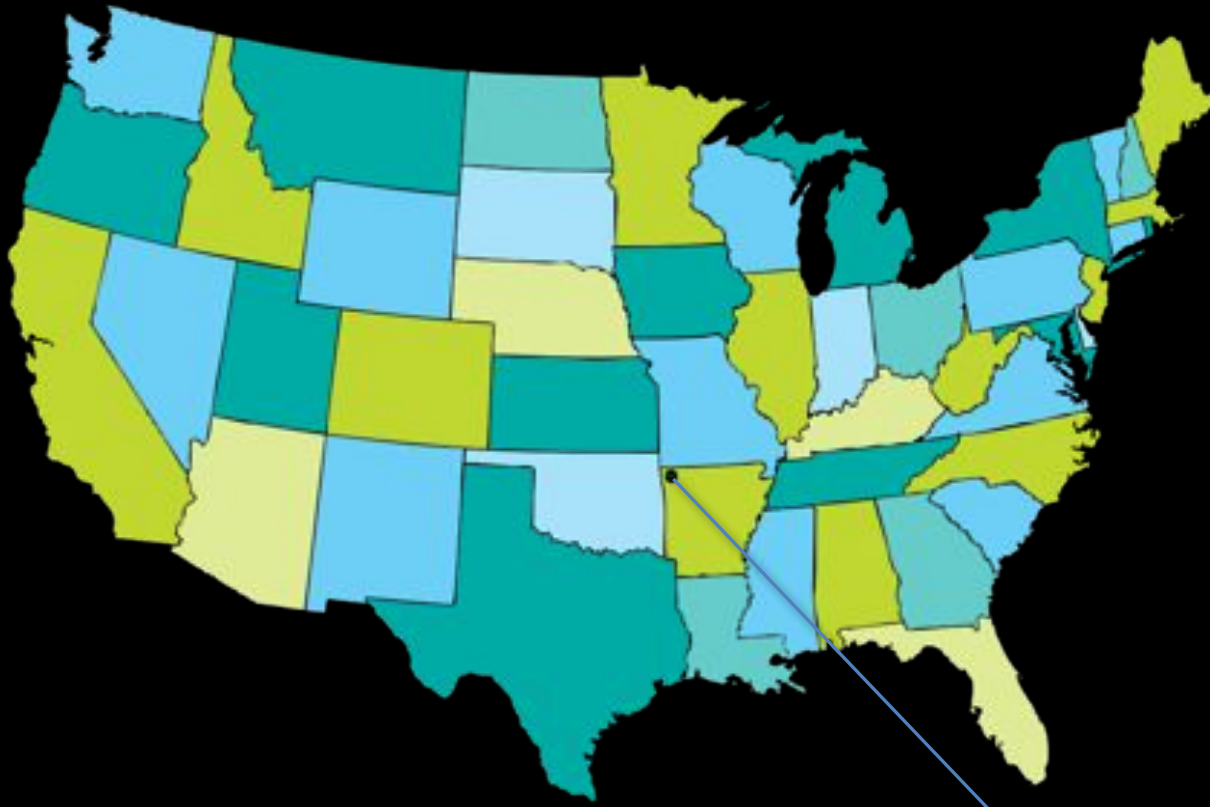


CROSSING THE BRIDGE BEFORE YOU COME TO IT:
**COLLECTIONS MANAGEMENT AT
CRYSTAL BRIDGES MUSEUM OF AMERICAN ART**

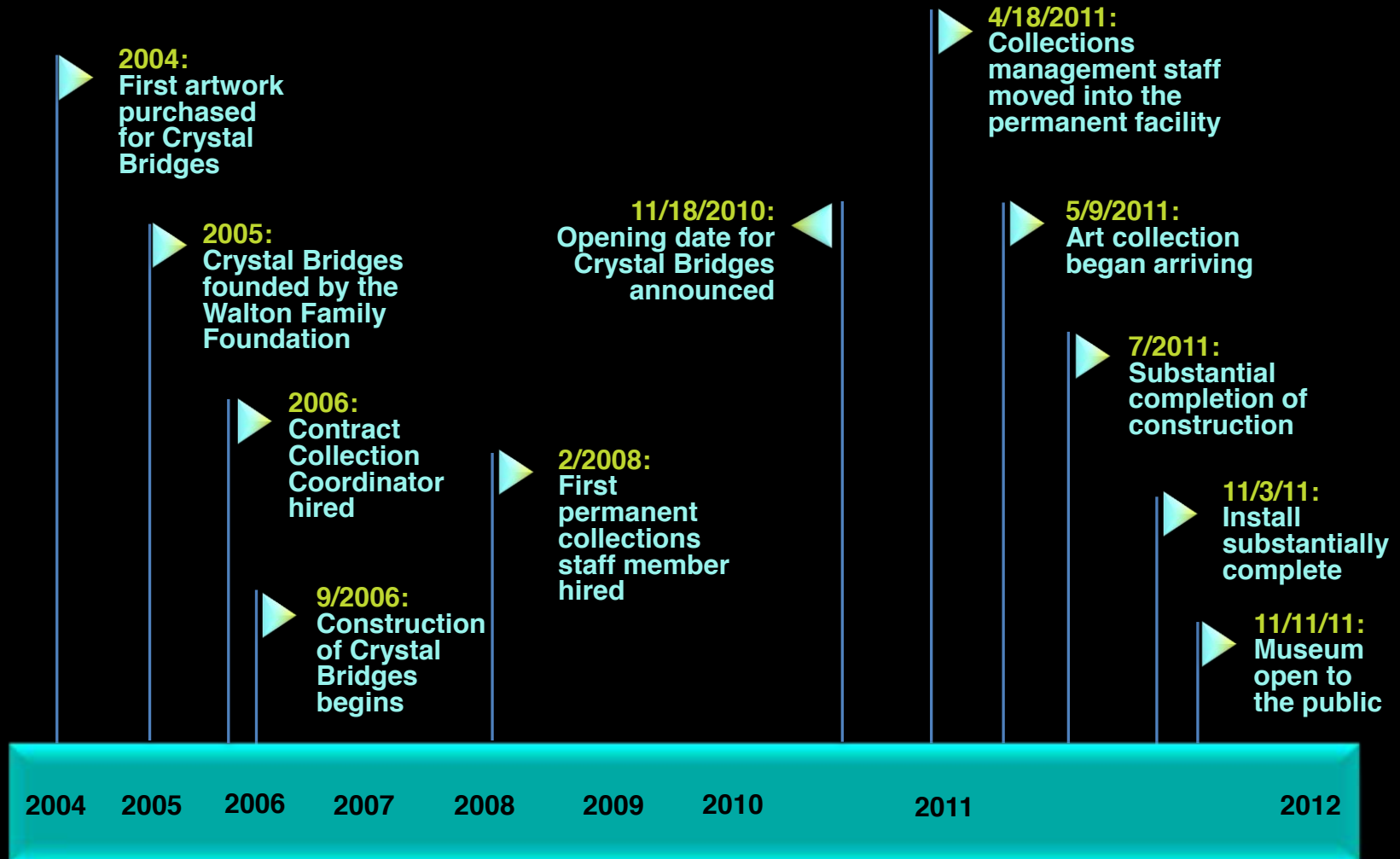


November 2, 2013



CRYSTAL BRIDGES
MUSEUM OF AMERICAN ART

A CONCISE HISTORY OF CRYSTAL BRIDGES



DISTANCE COLLECTIONS MANAGEMENT

WHAT DO YOU DO ALL DAY?



- New Acquisitions
- Inventory
- Conservation
- Framing

DISTANCE COLLECTIONS MANAGEMENT

WHAT DO YOU DO ALL DAY?



- Photography
- Loans
- Answer Questions

DISTANCE COLLECTIONS MANAGEMENT

FINE ART SERVICE PROVIDERS / PARTNERS

- Crate fabrication
- Transportation
- Inventory of works in storage
- Art handling
- Condition reporting
- Measurements



- Sculpture installation
- Advice
- Willingness to accommodate any request

PLANNING FOR A BIG MOVE

HOW DO YOU THINK OF EVERYTHING?

- Start early
- Determine discrete steps of the move
- Go in order
- Brainstorm with colleagues
- Keep it simple



MOVING THE COLLECTION

WHERE IT ALL CAME FROM



- Storage locations: 6 facilities in 4 states (New Jersey, Texas, Illinois, Arkansas) had 1,429 artworks
- Borrowers: 19 institutions across 12 states and 3 countries had 52 artworks
- Lenders: 43 individuals and institutions in 6 states lent 264 artworks and objects

MOVING THE COLLECTION

PACKING AND CRATING: STORAGE LOCATIONS BEFORE



MOVING THE COLLECTION

PACKING AND CRATING



MOVING THE COLLECTION

PACKING AND CRATING: STORAGE LOCATIONS AFTER



MOVING THE COLLECTION

CHOOSING TRANSIT: CONSIDERATIONS THAT AFFECTED OUR DECISION

- Insurance requirements
 - Per truck value limits
 - Notification and security requirements
- Security
- Couriers
- Lender Requirements
- Scheduling and timing
 - Receiving of trucks
 - Unpacking of artwork
 - Beginning and ending of loan periods
- Size of artwork
- Cost

MOVING THE COLLECTION

CHOOSING TRANSIT: OPTIONS WE CONSIDERED

Exclusive

- Pros: Fine art transit; on our schedule; offer courier accommodations; higher level of security
- Cons: More expensive; no art handling company had enough of their own trucks to accommodate our schedule

Shuttles

- Pros: Fine art transit; regular schedule; lower cost; run by art handlers not just drivers
- Cons: Exact timing hard to predict; lower overall level of security (can be mitigated with last on/first off service for more \$)

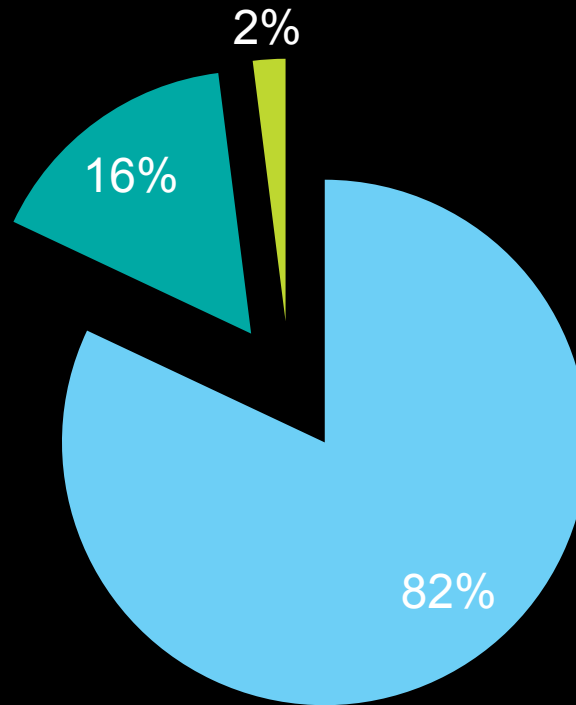
Local transit options: (moving companies, self transit, etc.)

- Pros: Can be done at our convenience; most cost effective
- Cons: Level of collections care in question; insurance coverage risk higher; large amount of staff time associated

MOVING THE COLLECTION

HOW ARTWORK WAS TRANSPORTED

■ Exclusive ■ Shuttles ■ Local Transit



MOVING THE COLLECTION

CHOOSING TRANSIT: LOAD 'EM UP!



Can we fill it?

Yes, we can!



MOVING THE COLLECTION

TRUCKING PLAN: THE BIG PUSH

- **Big Push**
 - May 9 – June 9, 2011
 - **13** exclusive-use trucks carrying **487** artworks
 - Couriers on **12** shipments
- **Scheduling Concerns**
 - How many trucks we could receive per week
 - Space
 - Time
 - Courier availability
 - Truck availability

Week 1	12:00am - 8:00am	8:00 am - 12:00pm	12:00pm - 5:00pm	5:00pm - 12:00am	notes	Office work hours:
Sun, May 8th					JDM to Chicago; EW to TX (5/5)	
Mon, May 9th		office work	office work	T1 (USArt) EW approx 5pm	EW dept USArt approx 10 am	10am - 2pm & 3pm - 7pm
Tues, May 10th		office work	office work		JDM dept TD approx 5pm	8am - 12pm & 1pm - 5pm
Wed, May 11th	T2 (TD) JDM approx 6am	unpack T1	Unpack T1			6am - 10am & 11am - 3pm
Thurs, May 12th		Unpack T1	Unpack T2	LT1 - Borrower as courier approx 6pm	MWOM to Chicago; dept TD approx 5pm	8am - 12pm & 1pm - 5pm
Fri, May 13th	T3 (TD) MWOM approx 6am	Unpack T2	Unpack T2		AN to NYC	6am - 10am & 11am - 3pm
Sat, May 14th						
Week 2	12:00am - 8:00am	8:00 am - 12:00pm	12:00pm - 5:00pm	5:00pm - 12:00am	notes	Office work hours:
Sun, May 15th					JDM to TX	
Mon, May 16th		Unpack T3	Unpack T3			8am - 12pm & 1pm - 5pm
Tues, May 17th		Unpack T3	T4 (Dis) JDM approx 5pm		JDM dept Disp approx 10am	10am - 2pm & 3pm - 7pm
Wed, May 18th		Unpack T3	Office work			8am - 12pm & 1pm - 5pm
Thurs, May 19th		Unpack T4	Unpack T4		AN dept CRZ approx 10am; NMWA approx 4pm	8am - 12pm & 1pm - 5pm
Fri, May 20th		T5 (CRZ) AN approx 12pm	Unpack T4			8am - 12pm & 1pm - 5pm
Sat, May 21st						
Week 3	12:00am - 8:00am	8:00 am - 12:00pm	12:00pm - 5:00pm	5:00pm - 12:00am	notes	Office work hours:
Sun, May 22nd					JDM to TX	
Mon, May 23rd		Unpack & 5	T6 (Dis) JDM approx 5pm		JDM dept Dis approx 10am	10am - 2pm & 3pm - 7pm
Tues, May 24th		Unpack T5	Unpack T5		AN to NYC	8am - 12pm & 1pm - 5pm
Wed, May 25th		Unpack T6	Unpack T6		AN dept CRZ approx 10am	8am - 12pm & 1pm - 5pm
Thurs, May 26th		T7 (CRZ) AN approx 8am	Unpack T6			8am - 12pm & 1pm - 5pm
Fri, May 27th		Office work	Unpack T7	LT2 - borrower in follow car approx 5pm	AN to DFW	8am - 12pm & 1pm - 5pm
Sat, May 28th						
Week 4	12:00am - 8:00am	8:00 am - 12:00pm	12:00pm - 5:00pm	5:00pm - 12:00am	notes	Office work hours:
Sun, May 29th						
Mon, May 30th		Holiday	Holiday	Holiday	Holiday	
Tues, May 31st		Unpack T7	T8 (USArt) AN approx 5pm		AN dept USArt approx 10am	10am - 2pm & 3pm - 7pm
Wed, June 1st		Unpack T7	Office work			8am - 12pm & 1pm - 5pm
Thurs, June 2nd		Unpack T8	Unpack T8		AN to TX	8am - 12pm & 1pm - 5pm
Fri, June 3rd		Unpack T8	T9 (USArt) AN approx 5pm			10am - 2pm & 3pm - 7pm
Sat, June 4th						
Week 5	12:00am - 8:00am	8:00 am - 12:00pm	12:00pm - 5:00pm	5:00pm - 12:00am	notes	Office work hours:
Sun, June 5th						
Mon, June 6th		Unpack T8	Unpack T9		JDM to TX	8am - 12pm & 1pm - 5pm
Tues, June 7th		Unpack T9	T10 (Dis) JDM approx 5pm		JDM dept Dis approx 10am	10am - 2pm & 3pm - 7pm
Wed, June 8th		Unpack T9	Office work		RB to Toledo	8am - 12pm & 1pm - 5pm
Thurs, June 9th			Unpack T9	Unpack T10 T11 (TAMISLAM) RB approx 10pm	RB dept Tam 8am; dept SLAM 5pm	4pm - 6:30pm & 7:30pm - 11:30pm
Fri, June 10th		Unpack T10	Unpack T10			9:30am - 12pm & 1pm - 5pm
Sat, June 11th						

MOVING THE COLLECTION

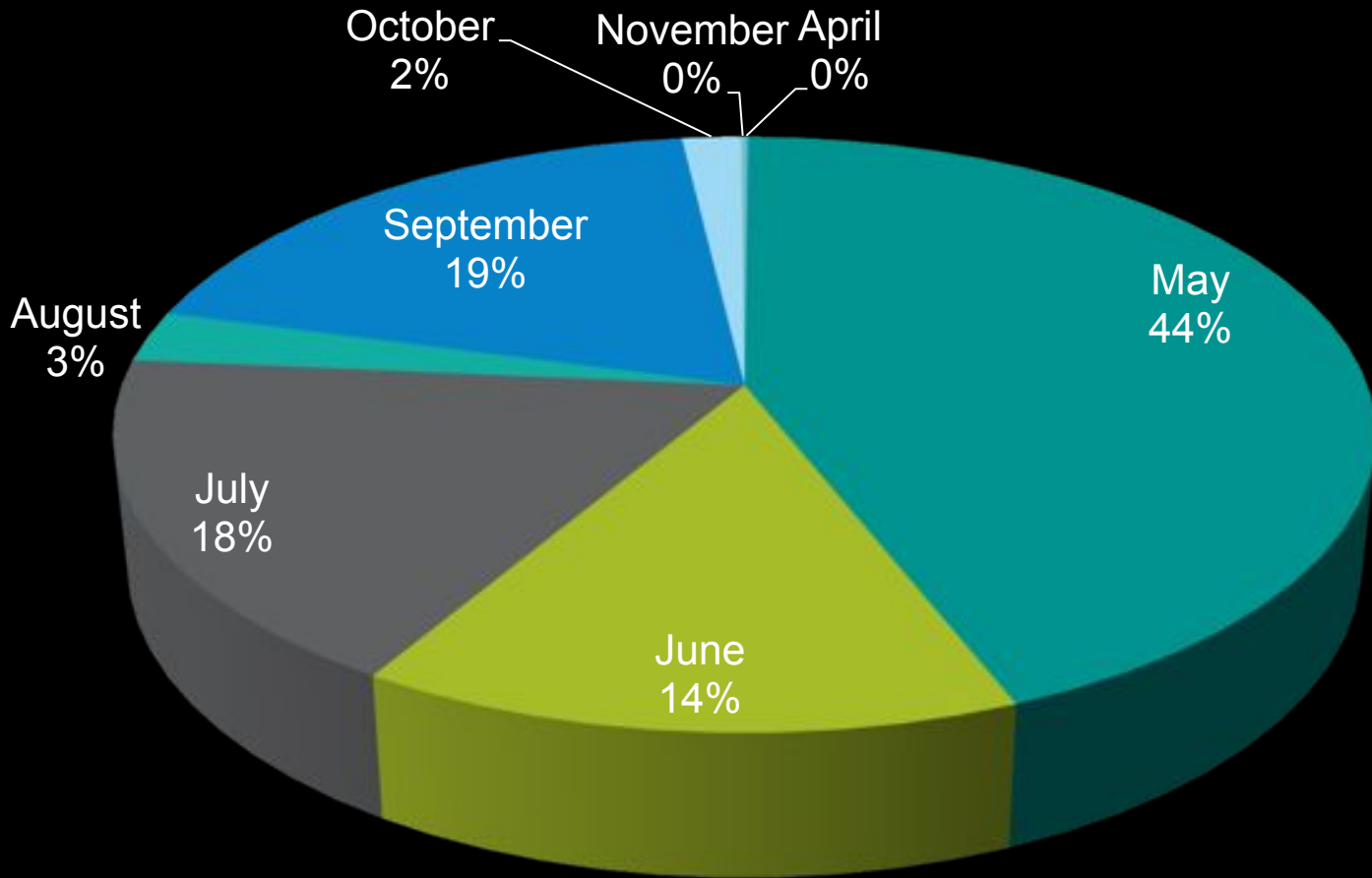
TRUCKING PLAN: MAY TO 11/11/11



- In the six months between May and November we received 54 trucks:
 - 29 exclusives, all but 8 couriered
 - 20 shuttle shipments
 - 5 delivered by lender or hand-carried
- All told, in 27 weeks 1,720 artworks were transported from 12 states and 3 countries to Crystal Bridges!
- With the 21 exclusive-use couriered trucks, our Registrars, Curators and even a Deputy Director (7 people in all) spent a total of 240 hours in transit with artwork.
- One truck broke down, one truck had to be “abandoned” during a tornado warning, and 19 trips were uneventful.

MOVING THE COLLECTION

ARTWORK RECEIVED BY MONTH



MOVING INTO THE MUSEUM

SUBSTANTIAL COMPLETION



- First departments to move into building
 - Office equipment and files
 - Prep Studio organization
-
- One month from move-in to the arrival of the first art truck

MOVING INTO THE MUSEUM

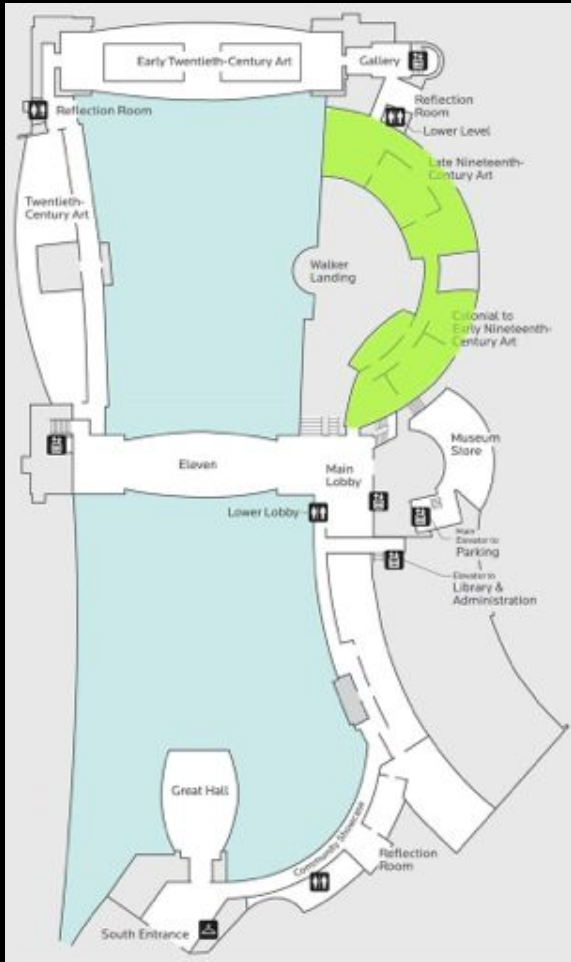
ACTIVE CONSTRUCTION SITE

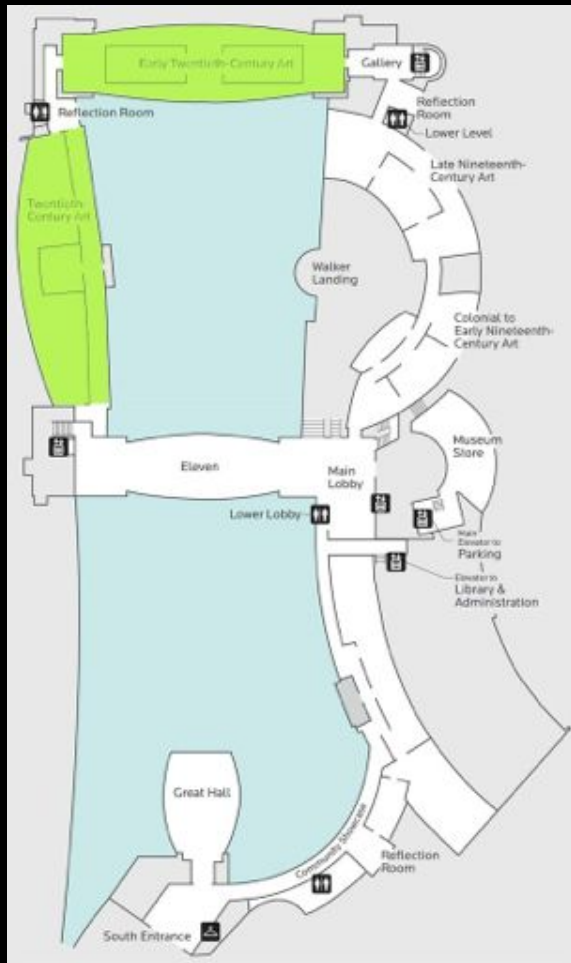


MOVING INTO THE MUSEUM

ACTIVE CONSTRUCTION SITE







PREPARING TO RECEIVE ART

READYING THE SPACES



- Climate control and security
- Clearing and cleaning the art path
- Taking actual dimensions
- Preparing the vaults

PREPARING TO RECEIVE ART

READYING OURSELVES



- Learning our way around the buildings
- Building a prep team
- Staying focused
- Sustaining morale

RECEIVING ART SHIPMENTS

THE PLANNING PAID OFF

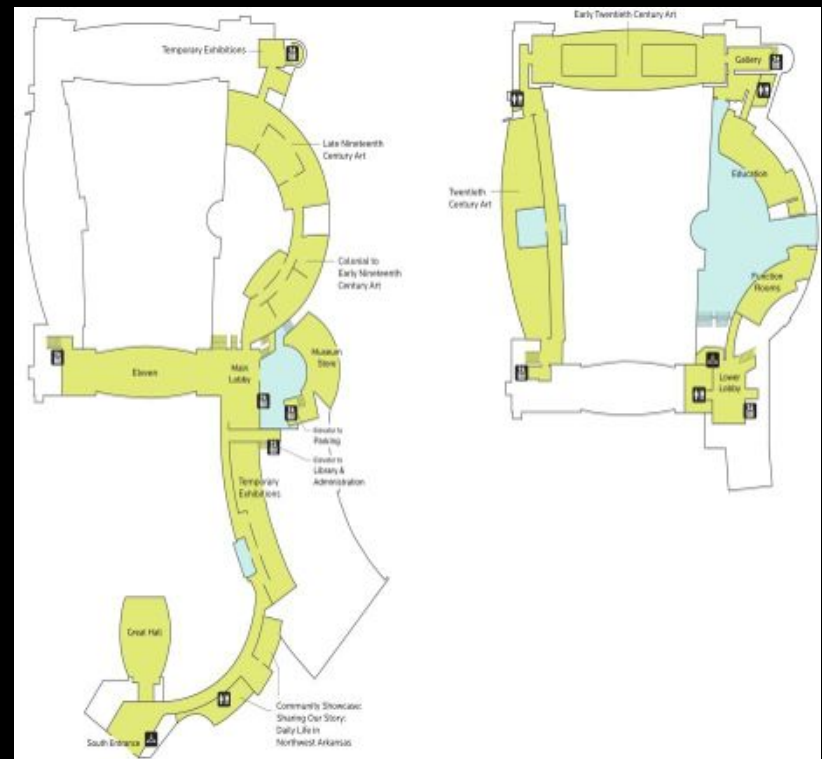


- Directing trucks
- Receiving Team
- Strategizing storage space
- Crate disposal

INSTALLATION AND OPENING

THE ENSUING INSANITY

- 35,000 sq. feet of gallery space installed over 3 months
- Total of 483 artworks and objects installed in that time
- Four outdoor sculptures, two of which can be considered monumental
- Team of 5-6 preparators and 5 registrars





BEYOND MOVE-IN AND INSTALL INCOMING AND OUTGOING LOANS; ACQUISITIONS



- 49 artworks were loaned to 25 institutions
- 264 artworks were borrowed from 43 lenders
- 66 artworks were acquired: 26 of these were gifts, and 40 were purchases

BEYOND MOVE-IN AND INSTALL RIGHTS AND REPRODUCTIONS

- Licensed the external reproduction of 27 artworks in the collection 48 times in approximately 33 publications
- Delivered close to 1,100 images in response to internal requests. Copyright permissions secured for 45 of these images. In addition, 173 images were formatted and delivered for the inaugural publication



THANK YOU! ONE IN A MILLION



We could not have been a success without our supportive community of museums, colleagues and vendors!

Questions?

