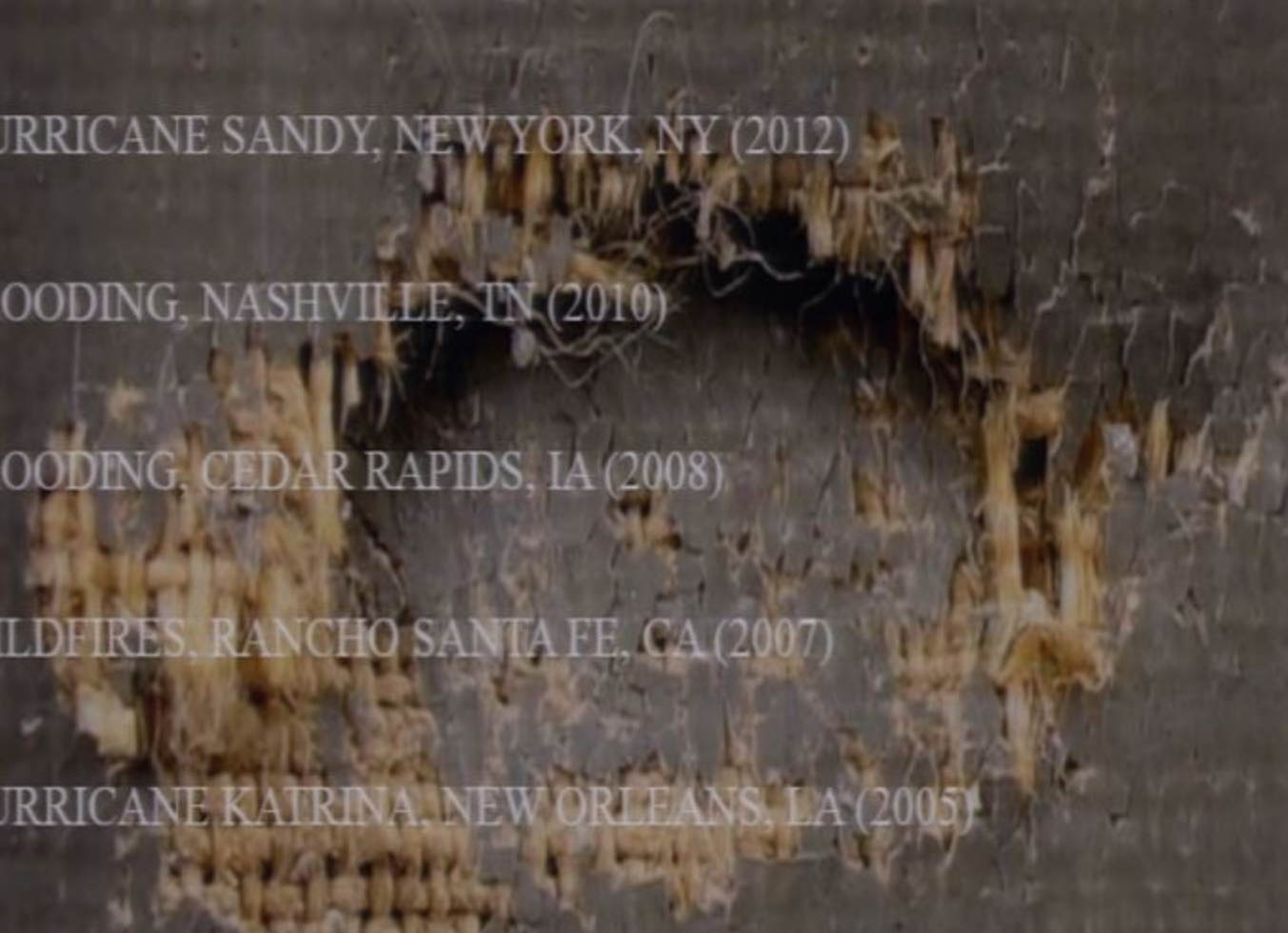


AFTER THE ALARM: RESPONSE, RECOVERY, AND
ADVOCATING FOR PREPAREDNESS AT YOUR
INSTITUTION

HEATHER BECKER
THE CONSERVATION CENTER

PART I

- 
- ICE STORMS AND PIPE BURSTS, EAST COAST & MIDWEST (2014)
 - HURRICANE SANDY, NEW YORK, NY (2012)
 - FLOODING, NASHVILLE, TN (2010)
 - FLOODING, CEDAR RAPIDS, IA (2008)
 - WILDFIRES, RANCHO SANTA FE, CA (2007)
 - HURRICANE KATRINA, NEW ORLEANS, LA (2005)
 - LASALLE FIRE, CHICAGO, IL (2004)

OUTLINING A DISASTER PLAN

- BUILDING
 - LAYOUT AND DESIGN
 - POLICIES, INSPECTION, & MAINTENANCE
 - GEOGRAPHIC PROFILE
- SECURITY AND SAFETY
 - ELECTRONIC SECURITY
 - FIRE DETECTORS & SUPPRESSION
 - FACILITY ADMINISTRATION
 - ACCESS
- ENVIRONMENTAL CONTROLS
 - CLIMATE
 - MONITORING
 - LIGHTING
 - PEST
- HUMAN RESOURCES & TRAINING
 - PHONE TREE
 - EMERGENCY RESPONSE TEAMS
 - EVACUATION PROTOCOL
 - INSURANCE
 - TRAINING DRILLS
- EMERGENCY RESPONSE CONTACTS
 - BROKERS & INSURANCE CONTACTS
 - ART SHIPPERS
 - CONSERVATORS
 - BUILDING REMEDIATION COMPANIES
- OFF-SITE BACK-UPS
 - INVENTORY, DOCUMENTATION, & APPRAISALS
 - PRIORITY REMOVAL PLAN

HUMAN RESOURCES & TRAINING

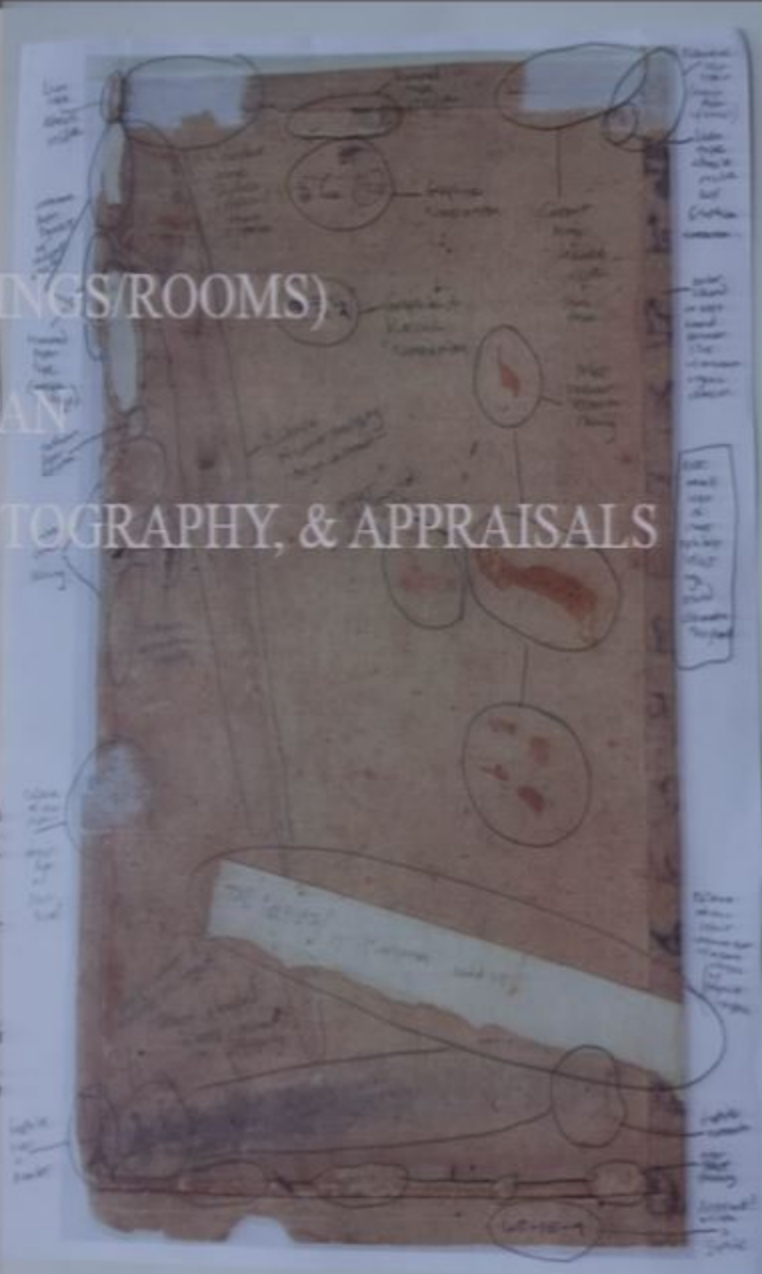
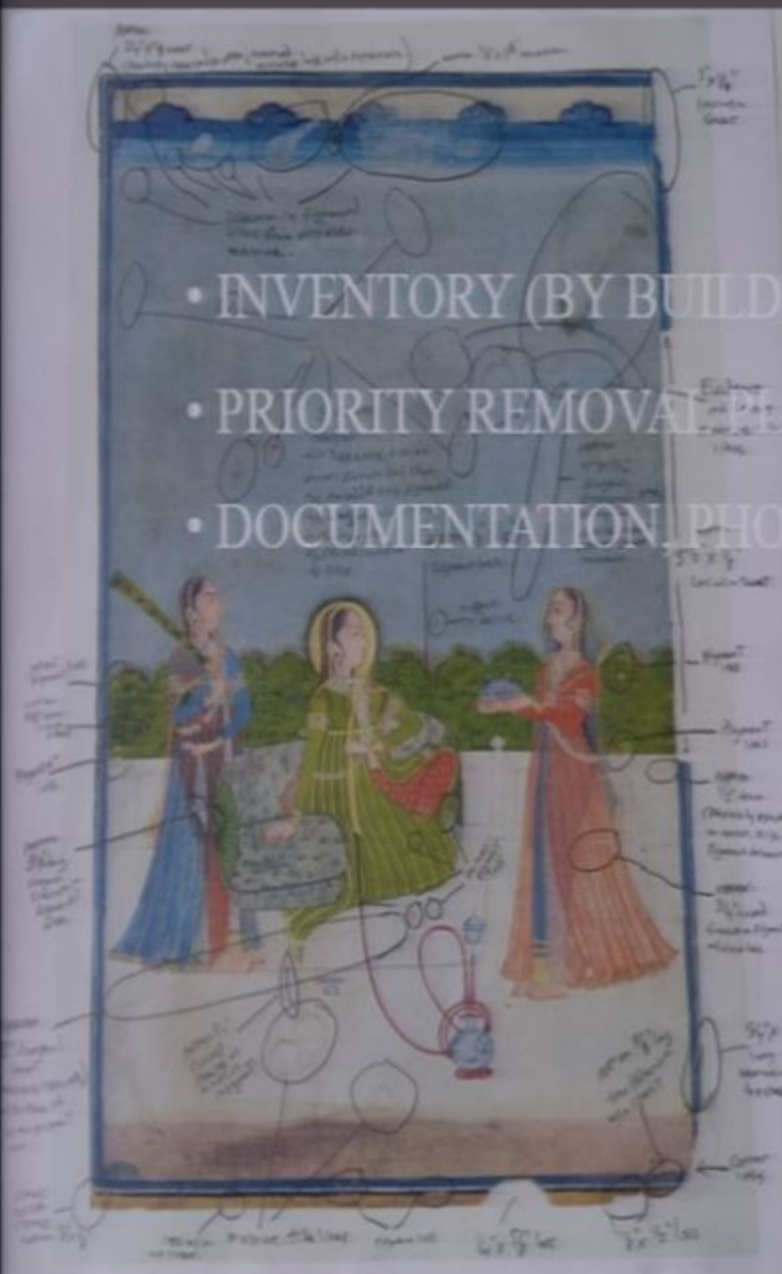
- PHONE TREE
 - EMERGENCY RESPONSE TEAMS
 - EVACUATION PROTOCOL
 - INSURANCE
 - TRAINING DRILLS
- 
- A man and a woman are standing in an art gallery, looking at a document together. The man is holding the document and pointing at it, while the woman, wearing glasses and a patterned scarf, looks on. In the background, there is a large framed painting on an easel.

EMERGENCY RESPONSE CONTACTS

- BROKERS &
INSURANCE
CONTACTS
- ART SHIPPERS
- CONSERVATORS
- BUILDING
REMEDICATION
COMPANIES

OFF-SITE BACK-UPS

- INVENTORY (BY BUILDINGS/ROOMS)
- PRIORITY REMOVAL PLAN
- DOCUMENTATION, PHOTOGRAPHY, & APPRAISALS





DISASTER RESPONSE
& RECOVERY

ON-SITE STEPS:

- TIMELY RESPONSE
- TEAM CONFIRMED
- ACCESS APPROVED
- SAFETY REQUIREMENTS
- WALK THROUGH – SCOPE DECISIONS
- DOCUMENTATION
- INVENTORY

Miro

3/4

STABILIZATION

- SLOWLY RETURN TO PROPER TEMPERATURE & HUMIDITY LEVELS
- PREFERRED ENVIRONMENTAL CONDITIONS
- MEDIUM SENSITIVITIES



TRIAGE

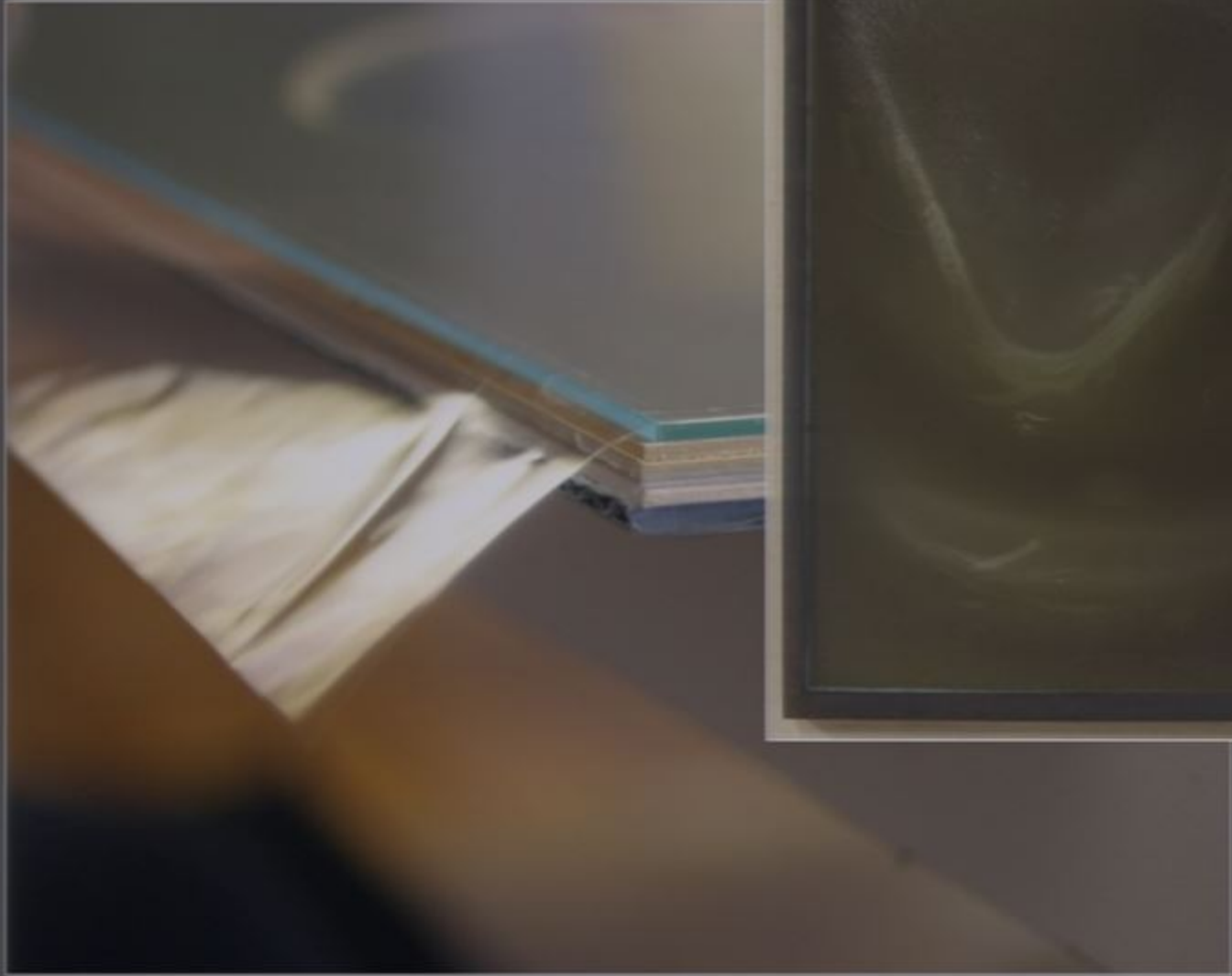
- FACINGS: RISK OF LOSS
- REMOVAL FROM FRAMES: WATER OR MOLD
- FREEZING (BOOKS/PHOTOGRAPHS)
- WARPING POTENTIAL
- MINIMIZE MOLD/WATER LEVELS

TRANSPORT

- PROFESSIONAL PACKING, HANDLING, & CRATING
 - AIR-RIDE VEHICLES
 - TEMPERATURE/HUMIDITY CONTROLS
 - ALARM & GPS TRACKING
 - BACKGROUND CHECKS
- 
- A person wearing a full white protective suit, a respirator mask, and blue gloves is carrying a large, dark, ornate framed picture. The person is walking in front of a blue corrugated metal wall. The image is overlaid with a semi-transparent blue filter.

EXAMINATION & TESTING

- MICROSCOPIC EXAMINATION
 - SOLVENT TESTING
- ULTRA-VIOLET EXAMINATION
 - INFRARED LIGHT
 - PIGMENT ANALYSIS
- INFESTATION ASSESSMENT
 - PRE- VS. POST-ANALYSIS
 - MOLD ANALYSIS



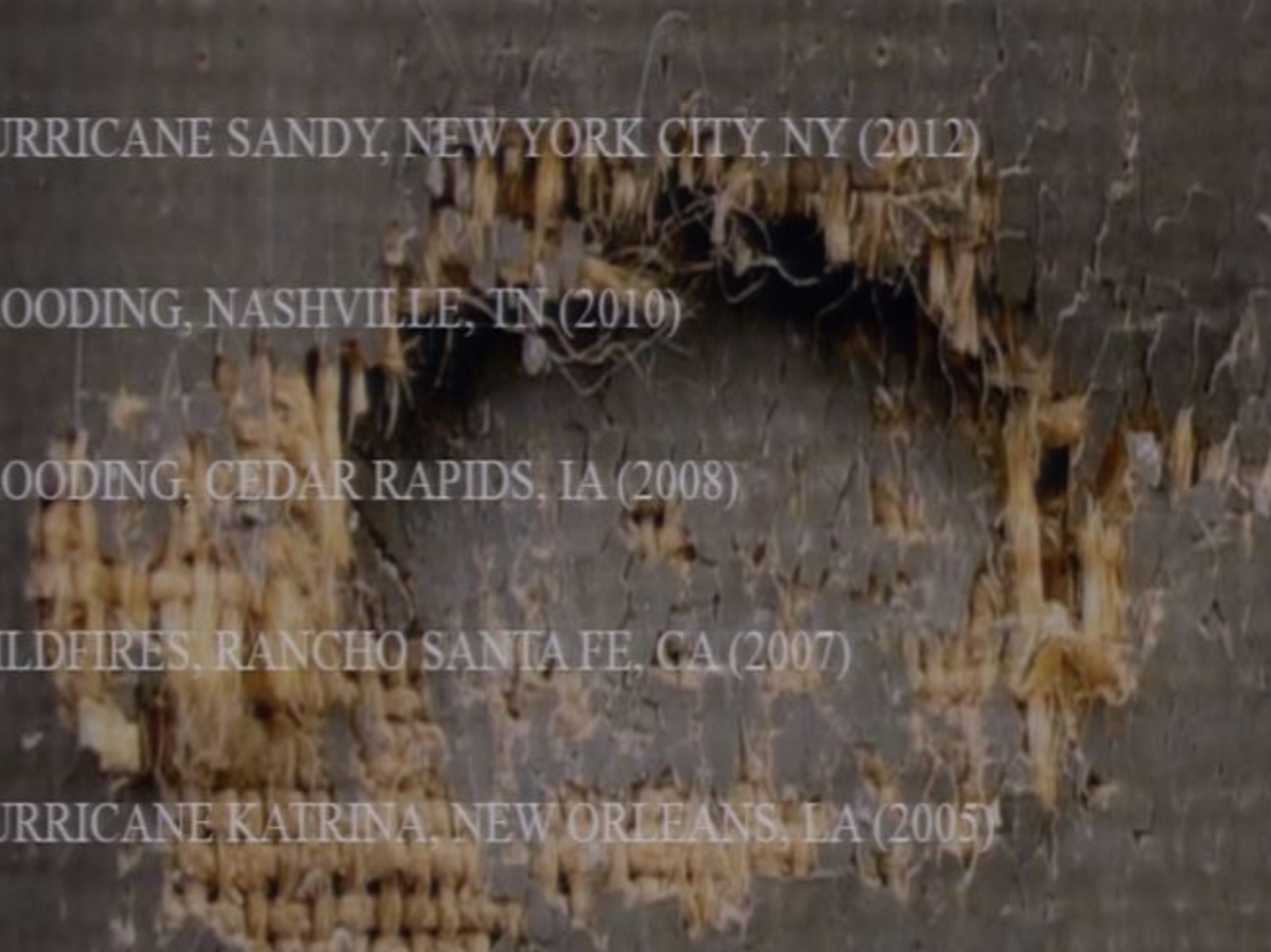
SOME COMMON LESSONS LEARNED

• PLANNING

- ESTABLISHING A DISASTER PLAN/TEAM IN ADVANCE
- OFF-SITE INVENTORY BY BUILDINGS/ROOMS WITH PHOTOGRAPHIC DOCUMENTATION/APPRAISALS
- PRIORITY REMOVAL PLAN
- BI-ANNUAL DRILLS & REVIEWS OF THE DISASTER PLAN WITH DIFFERENT CASE SCENARIOS

• EXPOSURES

- WAREHOUSE STORAGE EXPOSURE
- BASEMENT & FIRST FLOOR STORAGE EXPOSURE

- 
- ICE STORMS & PIPE BURSTS, EAST COAST & MIDWEST (2014)
 - HURRICANE SANDY, NEW YORK CITY, NY (2012)
 - FLOODING, NASHVILLE, TN (2010)
 - FLOODING, CEDAR RAPIDS, IA (2008)
 - WILDFIRES, RANCHO SANTA FE, CA (2007)
 - HURRICANE KATRINA, NEW ORLEANS, LA (2005)
 - LASALLE FIRE, CHICAGO, IL (2004)



AFTER THE ALARM: RESPONSE,
RECOVERY, AND ADVOCATING FOR
PREPAREDNESS AT YOUR INSTITUTION

REBECCA FIFIELD
REBECCA FIFIELD PRESERVATION SERVICES

PART II

Phases of Emergency Management



Creating a Vision



Connecting with Allies



Leading Change

The Change Equation: Driving Commitment

$$V_c + I_A + S_T > R$$

Vision with Communication

Incentives with Accountability

Enhanced Skills with Training

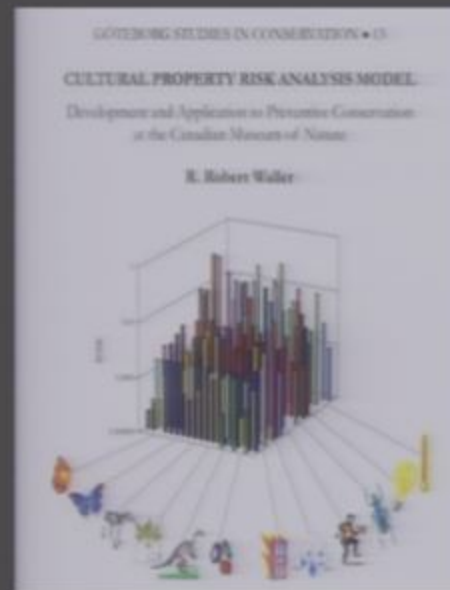
Resistance

- | | | |
|--|---|--|
| <ul style="list-style-type: none">• Visioning• Visibility of Leaders• Values• Mission Statement Development• Communication• Explaining the WIIFM• Leadership empathy• Passion for the cause | <ul style="list-style-type: none">• Accountability• Visible Measurement<ul style="list-style-type: none">-- Dashboards/Scorecards• Performance Management<ul style="list-style-type: none">-- Meeting Objectives-- Consequences• Rewards• Recognition• Goal Setting aligned to strategy• Empowerment | <ul style="list-style-type: none">• Skill Assessment• Skill Enhancement• Skills Development• Coaching /Mentoring• Developing Learning Strategies• Teaming Skills• Sharing Knowledge |
|--|---|--|

Vision without Action is just a Dream. Action without Vision just passes the time. Vision with Action can change the World. - Joel Barker

Cultural Property Risk Analysis Model

- FS: Fraction Susceptible
- LV: Loss of Value
- P: Probability
- E: Extent



$$FS \times LV \times P \times E = MR$$



PROTECT HERITAGE

Bridging Past and Future

Protectheritage.com

PUMPKIN

KENTUCKY FIELD



CARD SEED CO.

< FREDONIA, N. Y. >



ALL RIGHTS RESERVED

PUMPKIN

KENTUCKY FIELD



CARD SEED CO

< FREDONIA, N. Y. >



ALL RIGHTS RESERVED



PUMPKIN

KENTUCKY FIELD



CARD SEED CO

FREDONIA, N. Y.

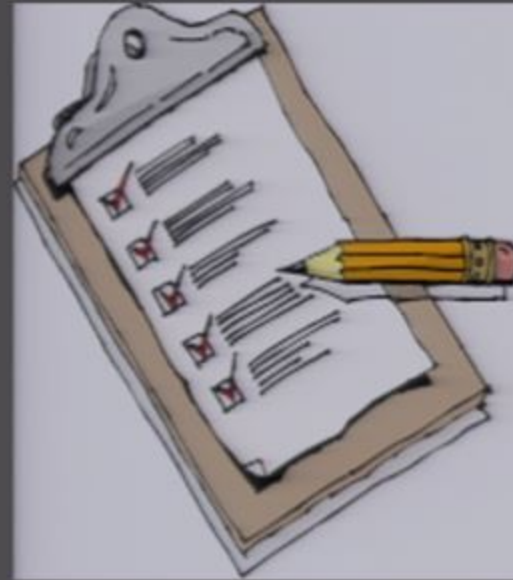
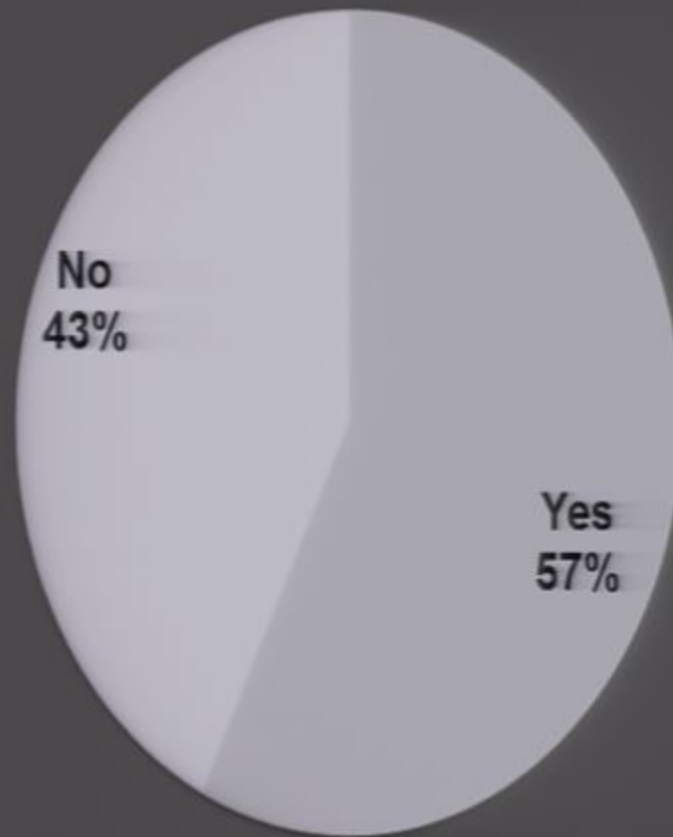


ALL RIGHTS RESERVED





Have you had any formal
emergency preparedness
training?



Hills Ice Skating
by Farm area, describe the steps
to be taken in the formation of
a youth hockey league for boys
in the 9 to 14 year age group.

cerned with swimming
Recreation Director Forrest
Jordan spoke of his investigation

Hurricane Agnes leaves death path

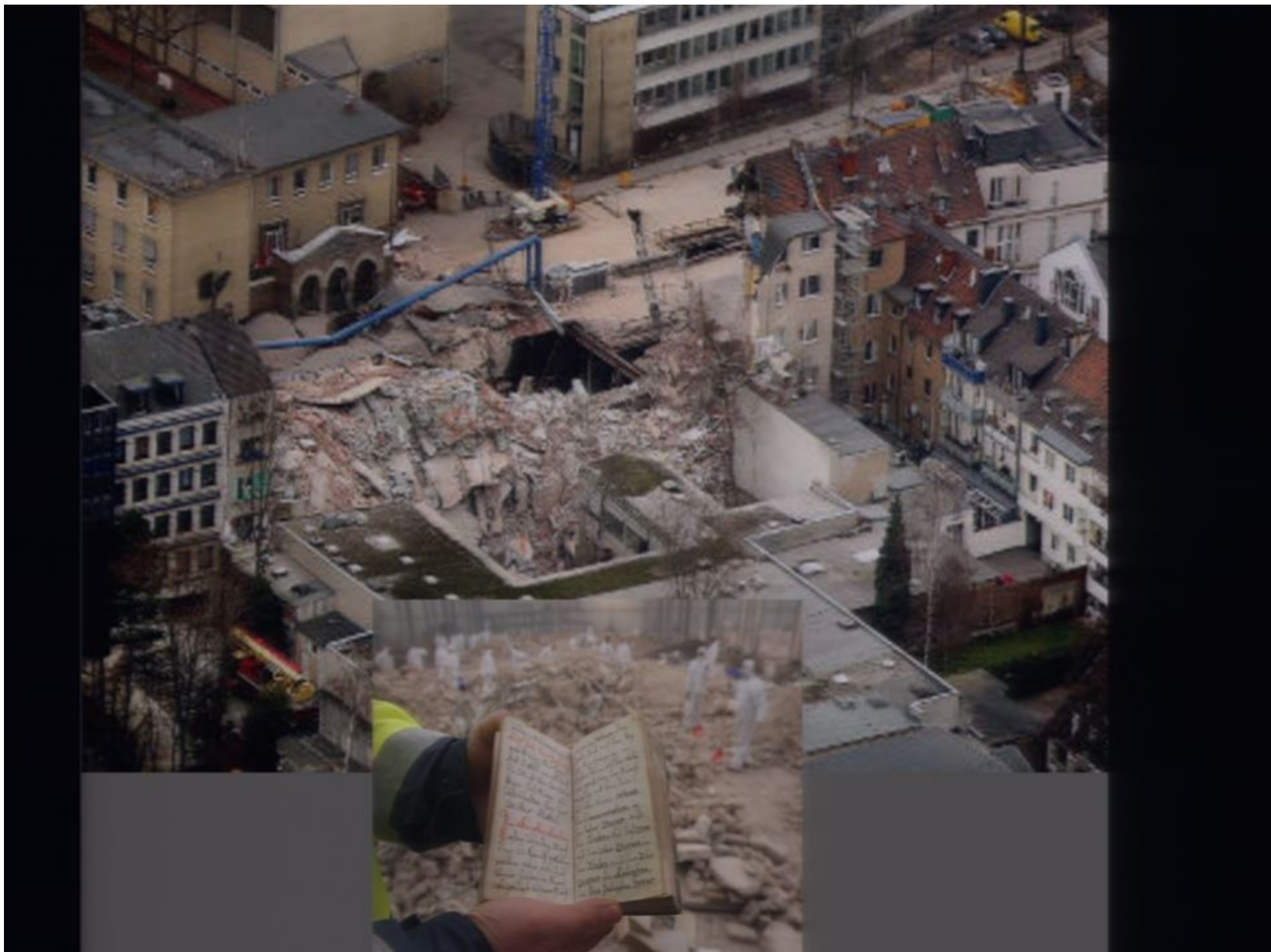
PANAMA CITY, Fla. (UPD)— Florida and Cuba from th
authorities said an

Hurricane Agnes quickly fizzled
in the tall pine country of
Florida Panhandle after
slammed inland from the
of Mexico Monday, but it
an uncertain death toll in
path.

At least 13 persons did

WEATHER











Smithsonian Institution
Scholarly Press

SMITHSONIAN CONTRIBUTIONS TO MUSEUM CONSERVATION • NUMBER 4



Unexpected— Earthquake 2011

Lessons to Be Learned

Edited by
A. Elena Charola,
Corine Wegener,
and Robert J. Koestler

Troubleshooting....

- *“We can’t know until the emergency hits what we will have to do.”*
- *“We don’t need make work.”*
- *“I have an exhibition to put on.”*









