

ALL OVER THE MAP: COLLECTION MANAGEMENT ISSUES FOR WORKS IN PUBLIC PLACES



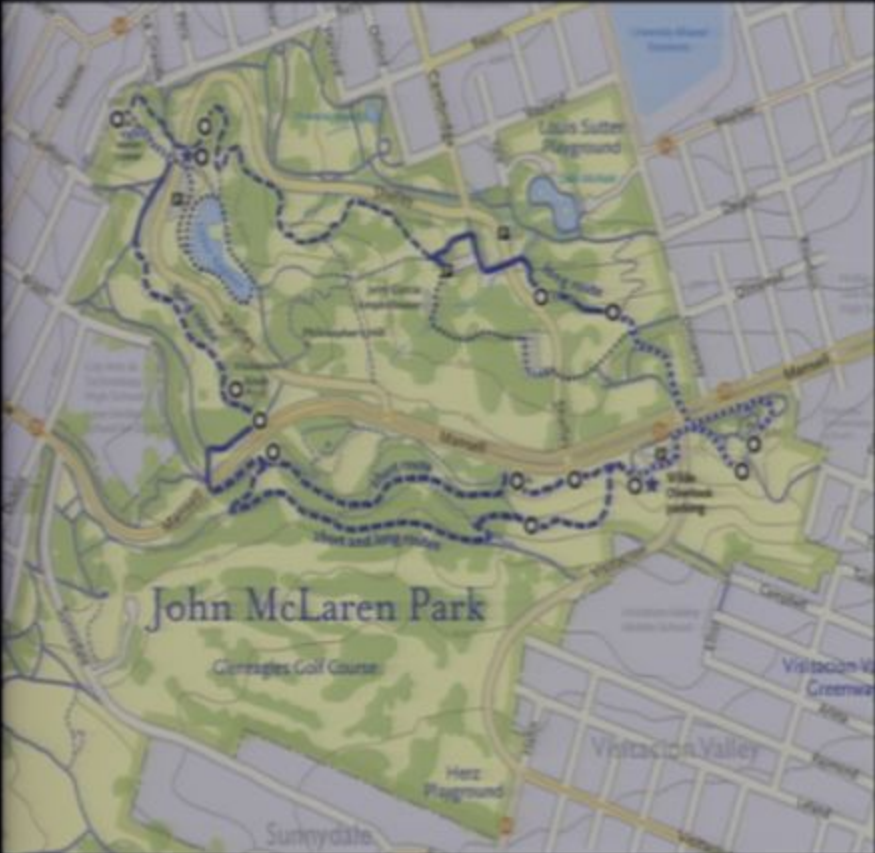
ARCS Biennial Conference, New Orleans, LA, November 12-15, 2015

CHALLENGES
WE FACE

VANDALISM & PUBLIC ABUSE



GEOGRAPHIC & FABRICATION CONSTRAINTS



ENVIRONMENTAL CONDITIONS



LACK OF STAFFING, FUNDING, AND INFRASTRUCTURE SUPPORT



PART 1
THE SOCIAL LIFE OF CIVIC ART

JENN DOYLE CRANE

PROGRAM ASSOCIATE, PUBLIC ART
PROGRAM/CIVIC ART COLLECTION

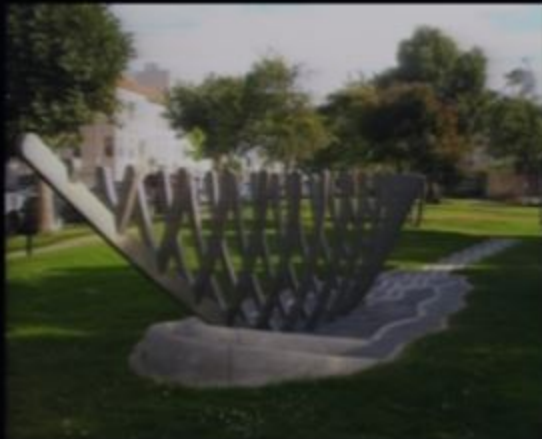
sfac

san francisco arts commission



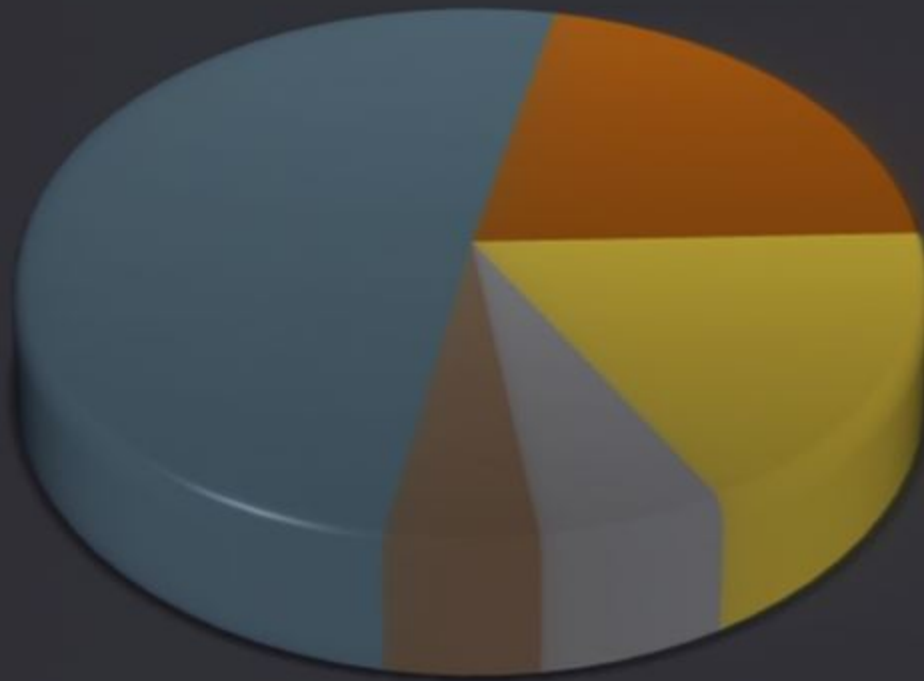
CIVIC ART COLLECTION

sfac



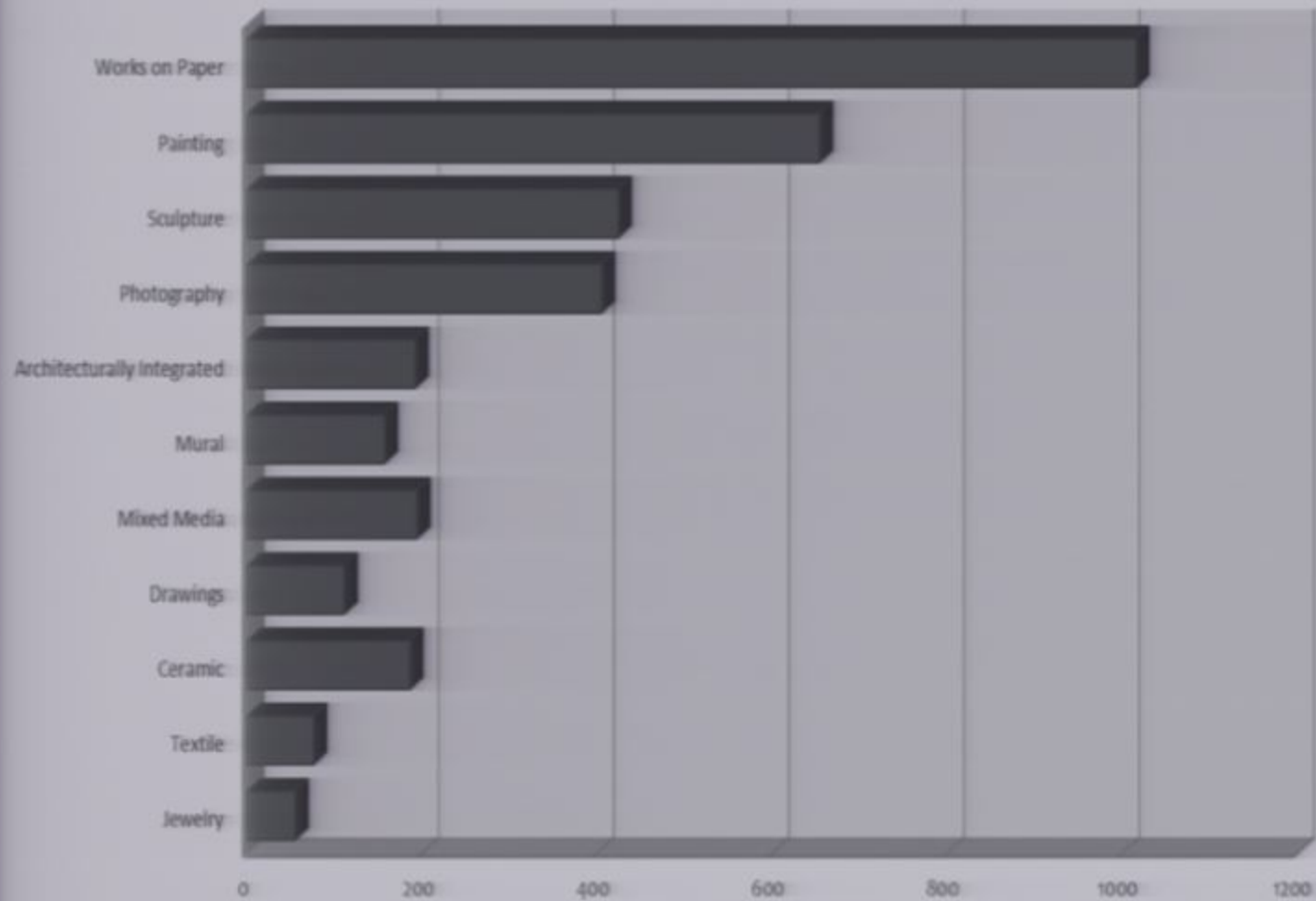
Civic Art Collection by the Numbers

3,490 Artworks



- Art Enrichment - 1,765
(1969 - present)
- Art Festival - 737
(1946 - 1989)
- Gift - 605
(1944 - present)
- Heritage & Legacy - 211
(pre-1932 - 1946)
- Miscellaneous - 172
(1932 - present)

Civic Art Collection by Media (3,490 Total)



A long way from this...



San Francisco Arts Festival, 1961

To this:
Art Enrichment (1969 – present)

1,765 Artworks

In 1969, San Francisco was one of the first cities in the nation to enact what came to be called a “% for Art” ordinance; which allocates 2% of city capital construction costs for the purposed of acquiring artwork for city facilities.



Keith Haring, *Untitled (3 Dancing Figures)*
Moscone Convention Center

Study 1- Streetscapes Project
Primitivo Suarez-Wolf, "Domestic Seating," 2013, cast bronze















Study 2
San Francisco General Hospital NEW Acute Care Center



Cliff Garten
"Ethereal Bodies," 2015
Steel, LED lighting sequence
and landscaping







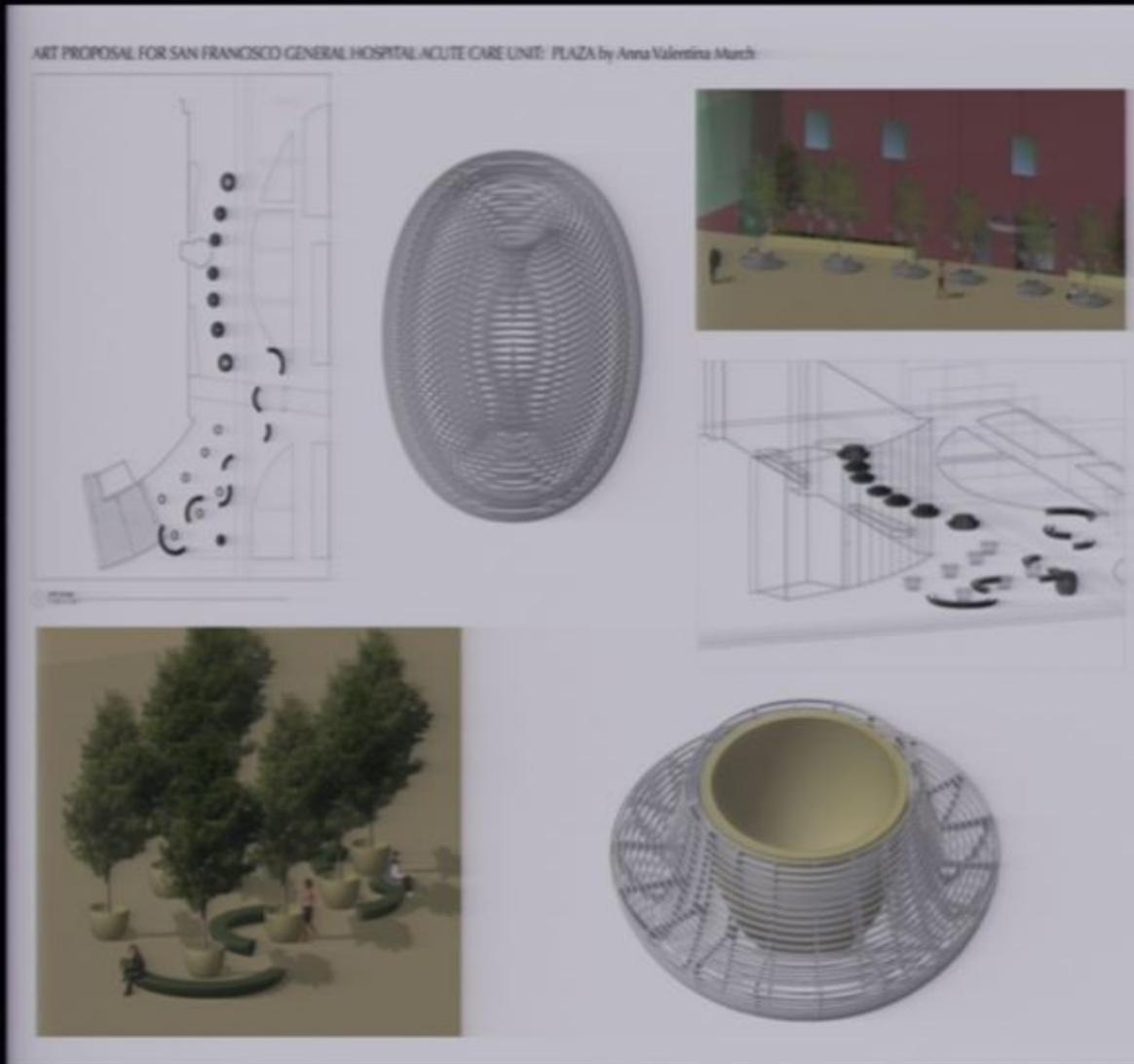




Anna Valentina Murch

"Archipelago," 2014

Stainless steel, granite and LED lights











Rupert Garcia

"Nature of Medicine," 2015

Terrazzo Floor design and mosaic murals





Jetro Martinez

"Amate San Francisco," 2015

Ceramic tile



Lena Wolff

"Circular Path," "Quail and Monkey Branch,"

"Tree of Life," 2015

Ceramic mosaics



Nancy Blum

"California Wildflowers," 2015

Glass with vitreous enamels and sandblasting



Mildred Howard

"Forever Yours," 2015

Glass with vitreous enamels



Alan Masaoka
"River of Time," 2015
Stained glass



Arthur Stern

"The Streets and Hills of San Francisco," 2015

Stained Glass and aluminum



Study 3
San Francisco International Airport



Robert Bechtle

"San Francisco Nova," 1979

Oil on canvas



Wayne Thiebaud
"18th Street Downgrade," 1978
Oil on canvas



James Torlakson

"Behind Ted McMann's Garage," 1976

Oil on canvas



Carlos Loarca

"Angulos en Todos Direcciones," 1978

Acrylic on board, diptych



Jay DeFeo

"Masquerade in Black," 1974-75

Mixed media on masonite



Merge Conceptual Design
"Sky," 2014
Stainless steel, LED lighting



Eric Staller

"Spirogyrate," 2014

Glass, acrylic, LED lighting, motors, electronics



Charles Sowers

"Butterfly Wall," 2012

Dichroic acrylic, stepper
motors and electronic
motor controllers





Amy Ellingson
"Untitled (Large Variation)," 2015
Ceramic mosaic tile





Val Britton

"Voyage," 2014

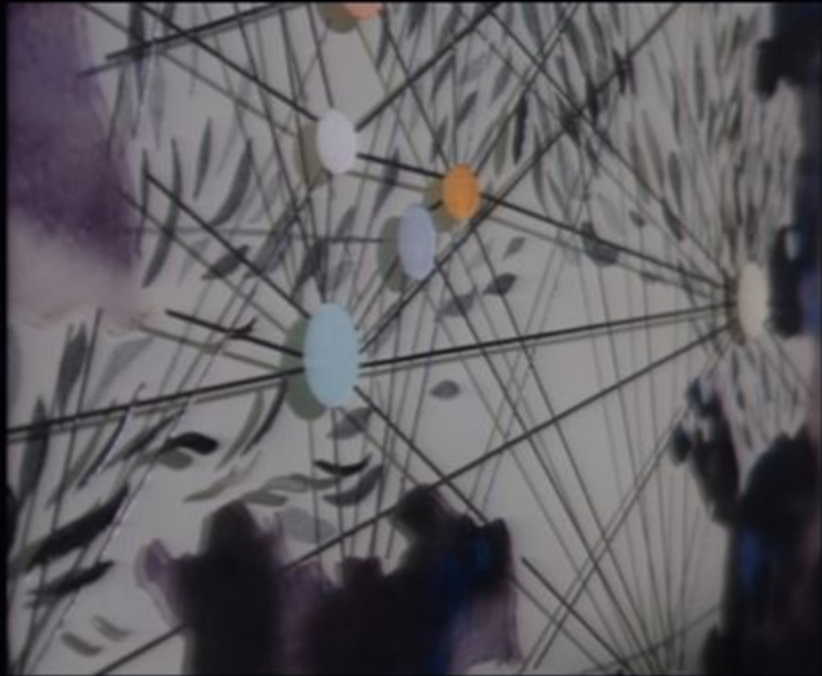
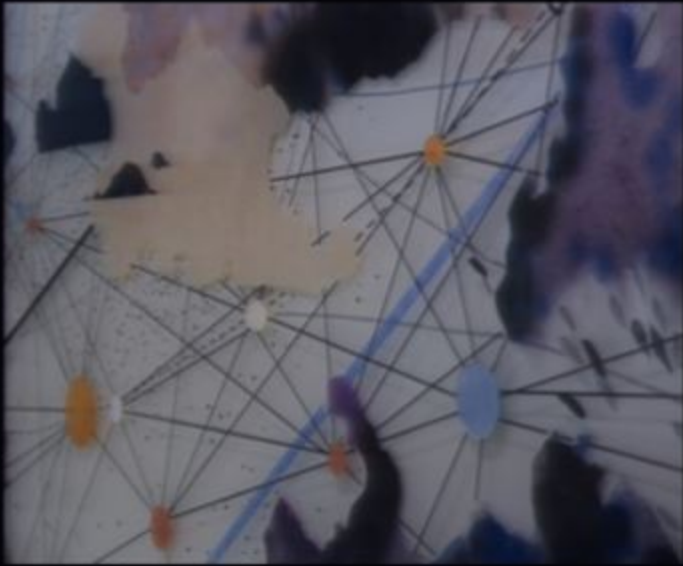
Laminated glass panels, ceramic glass melting
colors, graphite and lacquer paint



PART 2
CULTURAL HERITAGE IN LOUISIANA

KATHRYN A. LANG
CURATOR





Gates and Fences





PRIMING CHALMETTE NATIONAL CEMETERY GATES







IRON FENCE ALONG THE LEVEE

Note the pieces missing

Park Monuments



1950s PHOTO
GAR MONUMENT





GAR MONUMENT AFTER KATRINA



CANNON TUBES ON GAR MONUMENT



SPOTTS MONUMENT

Cleaned



Notice mixed material



**EARLY PHOTO OF
CHALMETTE
MONUMENT**

Took years to complete with
gaps between construction

Notice damage throughout



IRON DOOR
AND
PLAQUE



CHALMETTE
MONUMENT
RIGHT BEFORE
KATRINA



Chalmette National Cemetery



CEMETERY BRICK WALL AFTER KATRINA





CHALMETTE NATIONAL CEMETERY
WALL AFTER LIGHTNING STRIKE



Headstones



1900

1000 - 1000, CALIFORNIA

1000 - 1000

AIR POLLUTION
DARKENED HEADSTONES



WEAR ON HEADSTONES



A BROKEN AND A LICHEN COVERED HEADSTONE



TREE ROOTS AFFECT HEADSTONES



**AMERICORPS VOLUNTEERS
WORKING IN CEMETERY**





LOUISIANA GREEN CORPS
VOLUNTEERS

PARK STAFF INSTALLING A HEADSTONE



ORIGINAL
HEADSTONE
FOUND
BURIED OVER
A FOOT DEEP





CONTRACTORS STRAIGHTENING
HEADSTONES

REPAIRING HEADSTONES



COMPLETING REPAIRS



Beware of
projects
that will
add to your
work load



Cannon Tubes



PARK VOLUNTEER



NAVAL CANNON PRE-TREATMENT, NOTE CONDITION OF CARRIAGE



NAVAL CANNON AND CARRIAGE AFTER TREATMENT



ALUMINUM CARRIAGE PRE AND POST TREATMENT



MOUNTED CANNON AFTER TREATMENT



BRENNAN TUBE



MEASURING SIZE OF VENT HOLE



VENT HOLE REPAIR



THREADS AND COVER PIECE INSTALLED



FAZENDEVILLE



FAZENDEVILLE ROAD STILL VISIBLE



FAZENDEVILLE
ROAD TODAY



PART 3
CONSERVATION IN THE REAL WORLD

ROWAN GEIGER

DIRECTOR AND PRINCIPAL CONSERVATOR

sf
ART
CONSERVATION
415 • 407 • 0728

Mark DiSuvero at Crissy Field



Maya Lin

“Where the Land Meets the Sea,” 2008

California Academy of Sciences



Peter Richards and Susan Schwartzenberg
"Philosophers Way," 2013
John McLaren Park



Janet Echelman

“Every Beating Second,” 2011

San Francisco International Airport



Primitivo Suarez-Wolfe
"Domestic Seating," 2013
Duboce Triangle



Joseph Anthony McDonnell

"Yak," 1967

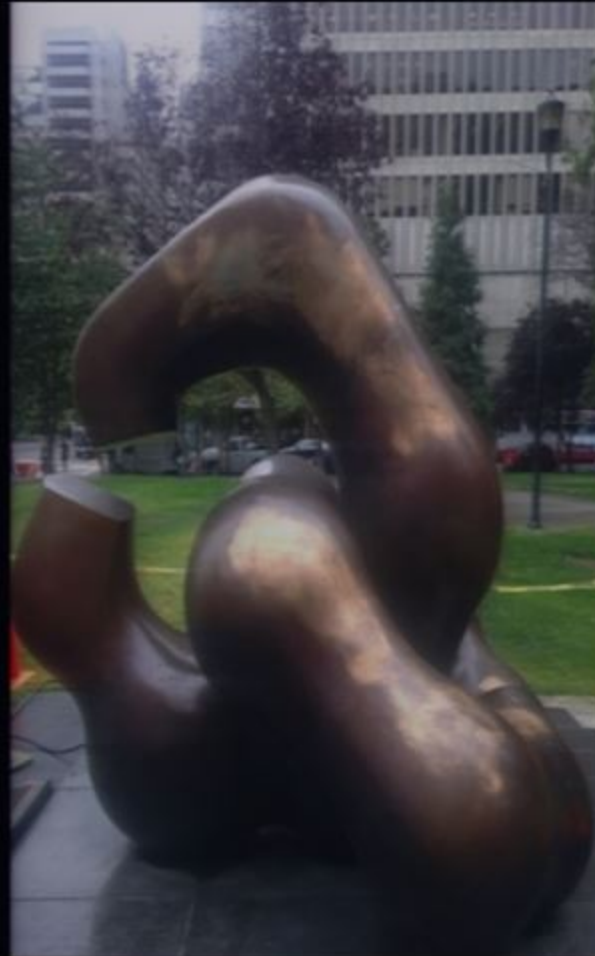
Pleasanton, CA



Man-Lin Choi

“Movement: The First 100 Years,” (Korean Monument), 1983

Sue Bierman Park



Magdalena Abakanowicz
"Standing Figures"



Yoshitomo Nara
"Puff Marshie/Hirosaki Version," 2006



Cliff Garten

"Ethereal Bodies," 2015

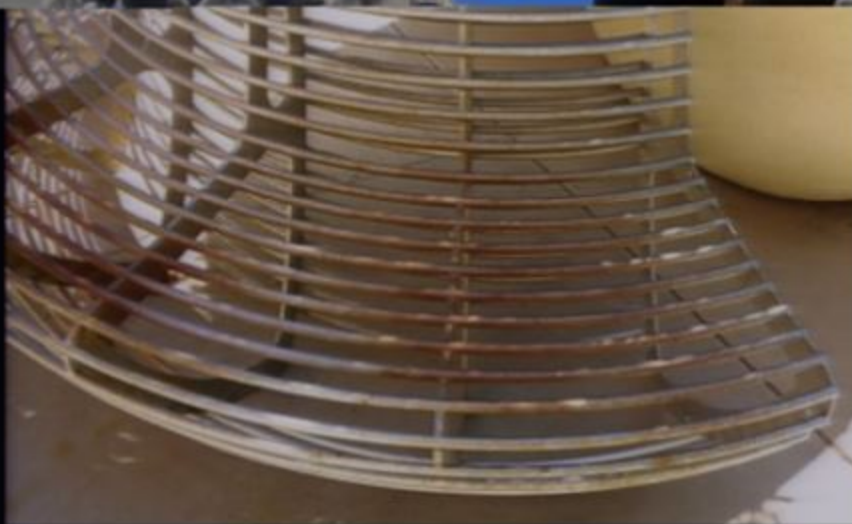
San Francisco General Hospital



Cliff Garten

"Ethereal Bodies," 2015

San Francisco General Hospital



Anna Valentina Murch
"Archipelago," 2014
San Francisco General Hospital



Haig Patigan
Fireman's Memorial, 1933
Washington Square Park



Rufino Tamayo

"Conquest of Space," 1983

San Francisco International Airport



Ruth Asawa

“Redding School Self-Portrait”

Boeddeker Park



