



THE BARNES FOUNDATION



**ARCS/PACCIN WORKSHOP  
6 NOVEMBER 2014**

# MOVING the BARNES



**The Collection move from  
Merion, PA to Philadelphia, PA  
2011-2012**



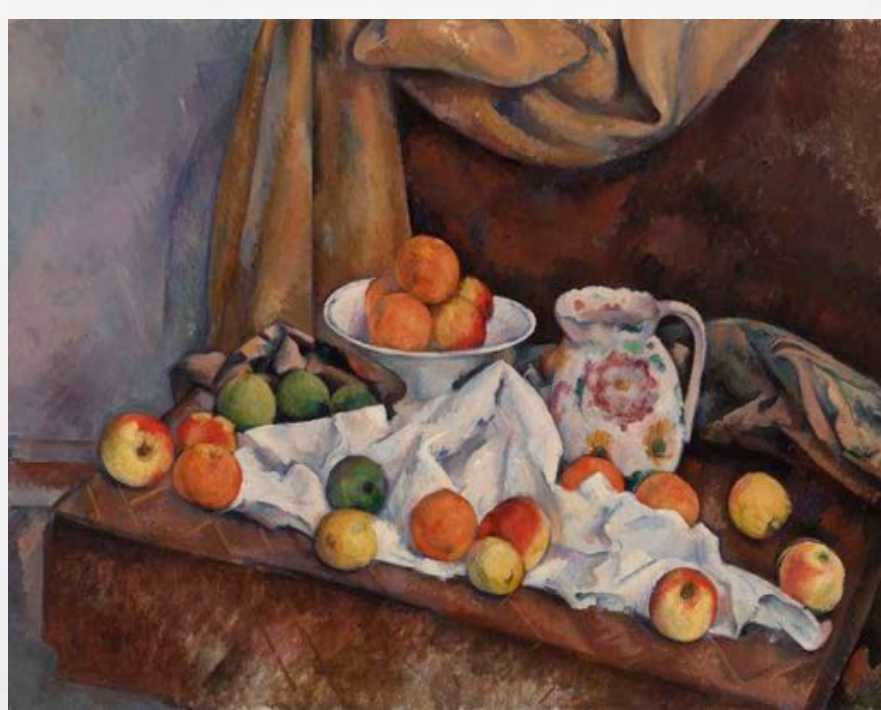
# A short history of the Barnes Foundation



# Dr. Albert C. Barnes



















# But first things first...



- ❧ COLLECTIONS ASSESSMENT:
  - ❧ Funded by the Mellon Foundation
  - ❧ First 100% inventory of the collection in its history
  - ❧ Purchase of TMS (The Museum System), collection management database
  - ❧ Digital photography of the collection and ensembles

# RFP (Request for Proposal)



- ❧ Developed out of the Collection Assessment
- ❧ Included comprehensive lists of objects by type
- ❧ Proposals to include:
  - ❧ Staffing, materials, and vehicles to: map and measure the ensembles, deinstall, pack, transport, store (as necessary), unpack and reinstall



# The Proposal



- ∞ Primary Goal: safekeeping of the collection
- ∞ Secondary Goals:
  - ∞ Complete all work within a precise time schedule
  - ∞ Optimize resources, reusing materials whenever appropriate

# Preparation/Planning @ Barnes



CONSERVATION

# Conservation



Judy Dion, painting conservator



Meg Newburger, frame conservation



# Conservation



Virginia Naudé  
working on Archangel Michael

Margaret Little working on Jean  
Renoir ceramic



# Gallery = Temporary Conservation Lab



BF157

\* Original Seaweed Frame (Missing Plugs Secured To Both  
Supports Frame); Missing Top 1/4 Circle In Upper  
Left Of Frame That Should Be Detached With The Plugs,  
A Surface Coat Applied, Finish With Seaweed.



© 2010 The Barnes Foundation. Not for Publication

Specialty Art/John S. J. Co. Inc.  
Barnes Foundation  
2010 - 2011  
2010 - 2011



# Objects Tagged & Color Coded





## THE BARNES FOUNDATION



BF288

Maurice Brazil Prendergast, American,  
1898–1928**The Beach "No. 2", c. 1914–1915**Oil on canvas, Overall: 24 x 49 1/8 in. (61 x  
124.8 cm)**Outgoing Barnes Markers:****Handling notes:**

**General:** The painting is unvarnished, and fragile marks like any artwork. Insure and deacidify. The back of the painting must not be touched, and measures should be taken to ensure that it does not come into contact with parking vehicles during handling or loading. The artwork painting must not be stored face down at any time. (LSC# 20190115)

in **Flowers, Green, or Spotted (Museum)**

On - **See above.**

2/2/2019 2/2/2019

2/2/2019 - **Outgoing** This painting was loaned to the Barnes Museum, 2019. From 2019 to 2020, it was loaned to the Barnes Museum, 2019. From 2019 to 2020, it was loaned to the Barnes Museum, 2019.

Examined by J. T. H. - **See above.**

**Incoming Barnes Markers:**

By **Outgoing** 2/2/2019 (see above)

From **Outgoing** 2/2/2019 (see above)

2/2/2019 2/2/2019

By **Outgoing** 2/2/2019

Examined by J. T. H. - **See above.**

# Preparation/Planning @ Barnes



REGISTRATION

# Preparation/Planning @ Barnes



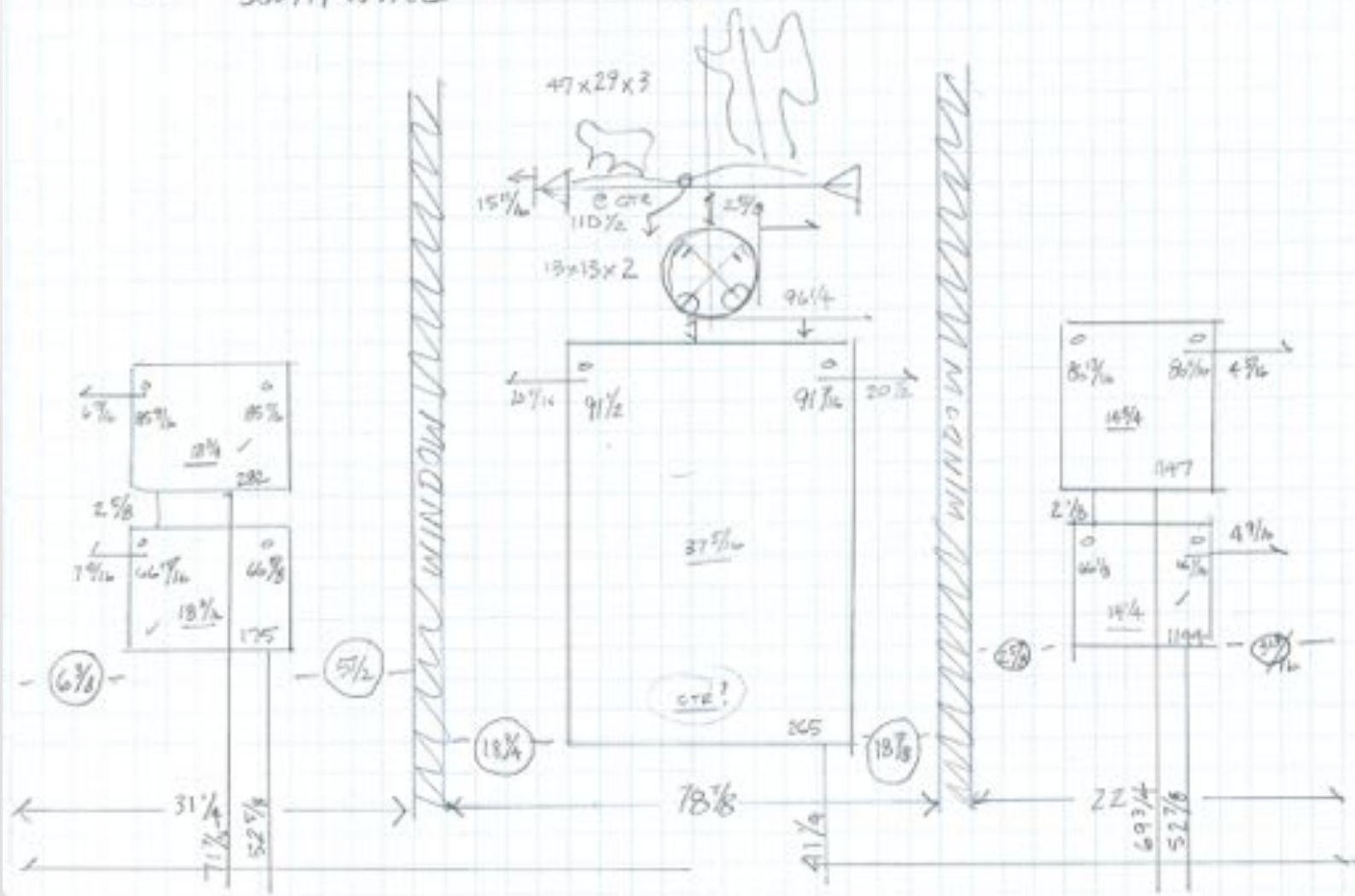
ENSEMBLE MEASURING



# Mapping & Measuring



GALLERY 2  
SOUTH WALL



	A	B	C	D	E	F	G	H	I	J	K	L	M	N	O	P	Q	R			
S39	Framed Paintings - Gallery 20				Height Measurement Method - Floor 144.75										Level Line Height						
S40	Ensemble Meas. Date- Complete-X				Hardware Install Date-				Pack Dates-			Install Dates-			Final Check-						
S41	Obj #	Inst#	Wall	Description	Medium	H	L	D	Conf	Crate-x/TC Box	H-H	L	R	EH	CR	Security	Map-x	Load#			
S42	7356	BF858	5	Langhi-Int.Scene/Masked Party	O/C	21.875	17	11/16	2	RS MT	25.5	19	11/16	19.875	0	BOLT	CK	8			
S43	7362	BF2066	5	Gritchenko-Mountain/2 Figures	Oil/panel	12.375	18	11/16	1	1/16 RS MT	17	11/16	10.5	10.375	0.5	NONE	5/16	8			
S44	Framed Works on Paper and Manuscripts-Gallery 20																				
S45	Obj #	Inst#	Wall	Description	Medium	H	L	D	Conf	Crate-x/TC Box	H-H	L	R	EH	CR	Security	Map-x	Load#			
S46	6932	BF646	5	STERNE-DEER	Crayon	18	13/16	24	8/16	RS MTF	24	125	17	3/16	16.5	0.5	NONE	OK	8		
S47	6934	BF648	5	DEMUTH-BERMUDA/TREE	Graphite/W	15	13/16	19	13/16	11/16	RS MT	19	7/16	14	1/16	13	15/16	1	NONE	0.25	8
S48	6924	BF683	5	MARQUET-NUDE WOMEN STANDING	Pen/Ink	10	5/16	8	5/16	0.5	RS MT	7.75	8.625	8.75	0.5	NONE	OK	8			
S49	6926	BF677	5	MARQUET-WOMAN NUDE SITTING	Pen/Ink	10	13/16	7	13/16	0.5	RS MT	7	5/16	8.625	8	3/16	0.5	NONE	OK	8	
S50	6932	BF692	5	MARQUET-FRUIT VENDOR	Pen/Ink	9	13/16	8	1/16	3/16	RS MT	7.5	8.125	8.125	0.5	NONE	OK	8			
S51	7361	BF653	5	CEZANNE-LEANING SMOKER	Graphite/W	20	3/16	15	13/16	11/16	RS MT	14	8/16	18	5/16	18.25	0.5	NONE	CK	8	
S52	6952	BF656	5	DEMUTH-BERMUDA STAIRWAY	Graphite/W	19	13/16	15	13/16	11/16	RS MT	15	5/16	17	13/16	17.625	1	NONE	OK	8	
S53	6968	BF2549	5	MANOLO-LAUNDRESS	Pen/Ink	15	5/16	11	9/16	11/16	RS MT	10	13/16	12	8/16	13	1/16	0.5	NONE	OK	8
S54	6930	BF654	5	CEZANNE-MONT SAINT VICTOIRE	Graphite/W	13	8/16	20	6/16	11/16	RS MT	20	11	13/16	11	13/16	0.5	NONE	CK	8	
S55	7353	BF652	5	CEZANNE-MONT SAINT VICTOIRE	Graphite/W	13	8/16	20	9/16	11/16	RS MT	19	11/16	12	5/16	12	7/16	0.5	NONE	CK	8
S56	6906	BF650	5	CEZANNE-CHAINEFETOILE MOUNTAIN	Graphite/W	13	8/16	20	6/16	11/16	RS MT	19	15/16	11	11/16	11	8/16	0.5	NONE	0.5	8
S57	7354	BF655	5	CEZANNE-TREES	Graphite/W	13	8/16	20	1/4	11/16	RS MT	19	6/16	11	13/16	12	0.5	NONE	CK	8	
S58	6961	BF432	5	BAILEY-HALYULIAH	pencil	12	8/16	10	3/8	11/16	RS MT	9	8/16	11	13/16	11	5/16	0.5	NONE	3/16	8
S59	6907	BF708	5	DEMUTH-BERMUDA HOUSES	Graphite/W	15	8/16	19	13/16	11/16	RS MT	19	5/16	13	13/16	13	7/16	0.5	NONE	CK	8
S60	7355	BF658	5	DEMUTH-TREES/ARCHITECTURE	Graphite/W	13	15/16	19	13/16	11/16	RS MT	19	3/16	13	8/16	13	7/16	1	NONE	CK	8
S61	6954	BF648	5	DEMUTH-BERMUDA ROOFTOPS	Graphite/W	15	13/16	19	13/16	11/16	RS MT	19	5/16	13	13/16	13	7/16	1	NONE	OK	8
S62	6938	BF634	5	MODIGLIANI-RAIMONDO	pencil	11	3/4	8	5/16	0.5	RS MT	7	8/16	8	25	8.5	0.5	NONE	OK	8	
S63	6966	BF737	5	PASCIN-STREET SCENE NY	Charcoal	12	1/2	14	7/16	0.625	RS MTF	14	3/16	10.5	10.5	0.5	NONE	0.25	8		
S64	6959	BF687	5	MARQUET-5 WOMEN/WHARF	Pen/Ink	7	5/16	9	1/16	3/16	RS MT	8	6/16	5	9/16	5	6/16	0.5	NONE	OK	8
S65	6636	BF2508	5	SHIMIN-IAN (GAL 167)		11	7/16	23	6/16	0.625	RS MT	23	3/16	10	3/16	10	3/16	0.5	NONE	OK	8



# Measuring Box

∞ Accurate measurements paramount for design of custom internal supports within each crate or box







# Different Objects, Different Packing Requirements



# Crates



# Strong Boxes



- ❧ System of interchangeable inserts (created in collaboration with PMA)
- ❧ Designed for each 2D work.
- ❧ Fit into standard sized foam-core boxes.
- ❧ Foam-core boxes fit into either a full crate, a rolling cart, or other conveyance.





# Insert Design



# Standardized Crates & Boxes



# Rolling Carts



- ❧ Designed in collaboration with Princeton University Art Museum
- ❧ Accepts various internal boxes and trays, allowing for flexibility and reusability.
- ❧ AC Plywood with Char-Esther foam for insulation and shock absorption; bolt closure; gasketed for protection from elements and any other security concerns



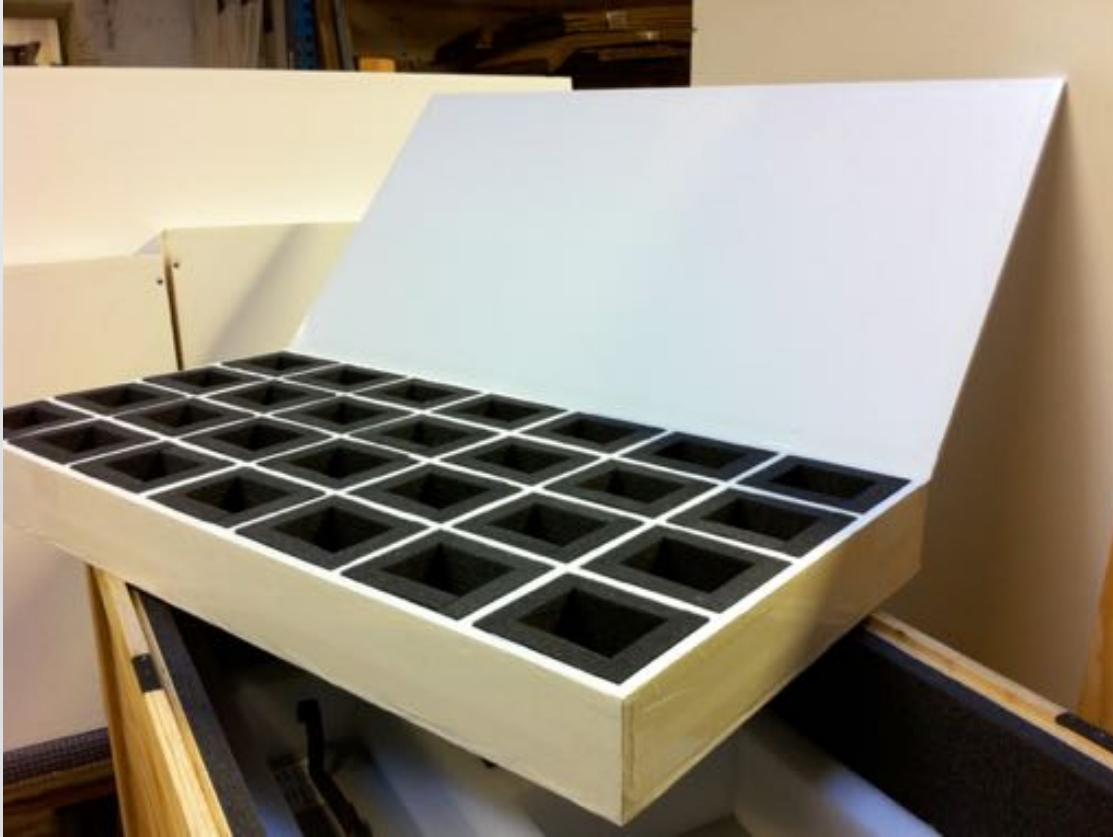








# 3D Objects



- ❧ Multi-cavity trays for small 3D objects.
- ❧ Trays designed to be stacked inside rolling carts.

# Metalwork



# Moving 'The Dance'

































Barnes on the Parkway  
Philadelphia, PA  
January 2012  
Reinstallation time lapse







# The Move!























# Reinstallation!



# Lessons Learned



the end

