



## ITALIA: A User's Manual for Lending and Borrowing Art Works

ARCS Inaugural Conference - Chicago, IL - Oct. 31st Nov. 3rd 2013



Borrowing from Italy ...

**Logistics and Couriers: *To know is to manage***

Antonio Addari

**ARTERÌA**  
L'arte viaggia con noi



## ITALIA: A User's Manual for Lending and Borrowing Art Works

ARCS Inaugural Conference - Chicago, IL - Oct. 31st Nov. 3rd 2013

Most of the Italian Museums are located in Historic Buildings, City Centers or Medieval Towns

**As a result of this LOGISTIC is a big issue !**

Traffic restrictions, architectural barriers, events will affect your budget, schedule, insurance.







# ITALIA: A User's Manual for Lending and Borrowing Art Works

ARCS Inaugural Conference - Chicago, IL - Oct. 31st Nov. 3rd 2013



Roma  
Palazzo Braschi





# ITALIA: A User's Manual for Lending and Borrowing Art Works

ARCS Inaugural Conference - Chicago, IL - Oct. 31st Nov. 3rd 2013



**Roma**  
**Galleria Doria Pamphilj**





# ITALIA: A User's Manual for Lending and Borrowing Art Works

ARCS Inaugural Conference - Chicago, IL - Oct. 31st Nov. 3rd 2013



**Roma  
Galleria Corsini**





# ITALIA: A User's Manual for Lending and Borrowing Art Works

ARCS Inaugural Conference - Chicago, IL - Oct. 31st Nov. 3rd 2013



Roma  
Galleria Spada





# ITALIA: A User's Manual for Lending and Borrowing Art Works

ARCS Inaugural Conference - Chicago, IL - Oct. 31st Nov. 3rd 2013



Roma  
Galleria Colonna





# ITALIA: A User's Manual for Lending and Borrowing Art Works

ARCS Inaugural Conference - Chicago, IL - Oct. 31st Nov. 3rd 2013







# ITALIA: A User's Manual for Lending and Borrowing Art Works

ARCS Inaugural Conference - Chicago, IL - Oct. 31st Nov. 3rd 2013



**Firenze**  
**Galleria degli Uffizi**





# ITALIA: A User's Manual for Lending and Borrowing Art Works

ARCS Inaugural Conference - Chicago, IL - Oct. 31st Nov. 3rd 2013



Milano  
Pinacoteca di Brera





# ITALIA: A User's Manual for Lending and Borrowing Art Works

ARCS Inaugural Conference - Chicago, IL - Oct. 31st Nov. 3rd 2013



**Venezia  
Gallerie dell'Accademia**







# ITALIA: A User's Manual for Lending and Borrowing Art Works

ARCS Inaugural Conference - Chicago, IL - Oct. 31st Nov. 3rd 2013







# ITALIA: A User's Manual for Lending and Borrowing Art Works

ARCS Inaugural Conference - Chicago, IL - Oct. 31st Nov. 3rd 2013



Milano  
Pinacoteca di Brera



Roma  
Galleria Corsini



Venezia  
Gallerie dell'Accademia



Roma  
Palazzo Venezia



Venezia  
Museo Correr



Roma  
Palazzo Barberini

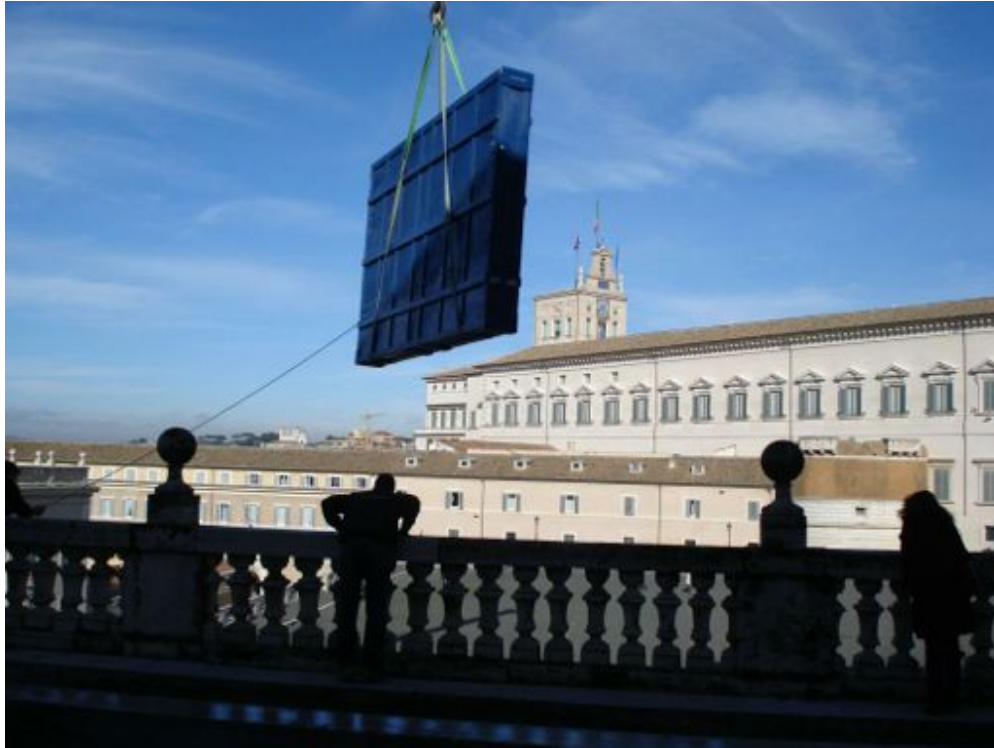
elena sartorari





# ITALIA: A User's Manual for Lending and Borrowing Art Works

ARCS Inaugural Conference - Chicago, IL - Oct. 31st Nov. 3rd 2013







## *How logistic problems are affecting the **schedule ?***

- Most of the operations can only be done at night or early morning
- Often you need to use the closing day of the museum
- You have also to consider religious events, weekly markets, political meetings, demonstrations etc





# ITALIA: A User's Manual for Lending and Borrowing Art Works

ARCS Inaugural Conference - Chicago, IL - Oct. 31st Nov. 3rd 2013







# ITALIA: A User's Manual for Lending and Borrowing Art Works

ARCS Inaugural Conference - Chicago, IL - Oct. 31st Nov. 3rd 2013



Lipari, Sicily  
Museo Archeologico





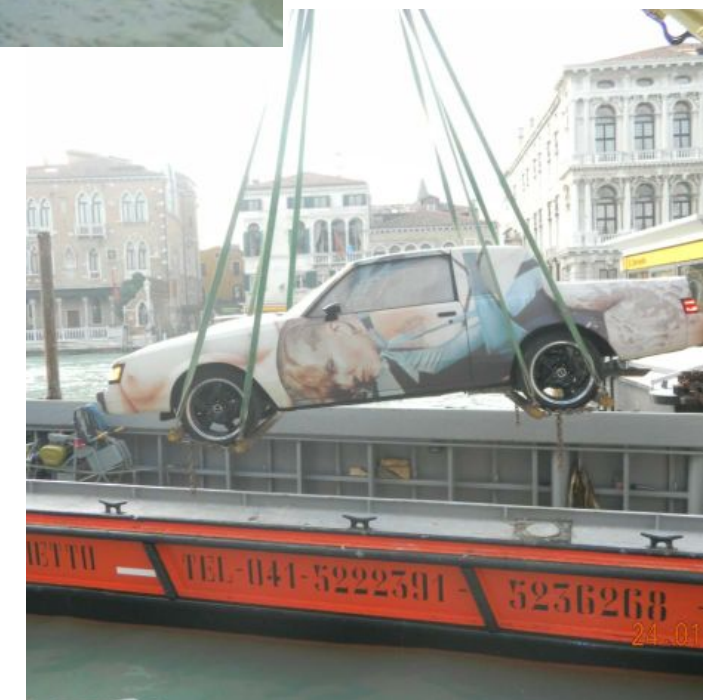


# ITALIA: A User's Manual for Lending and Borrowing Art Works

ARCS Inaugural Conference - Chicago, IL - Oct. 31st Nov. 3rd 2013



Venezia







## *How logistic problems are affecting the budget ?*

- Most of the operations can only be done at night or early morning or special days
- It is often required the use of cranes and extra labour
- It is often required the use of smaller van or other mean of transport to deliver to big trucks parked nearer





# ITALIA: A User's Manual for Lending and Borrowing Art Works

ARCS Inaugural Conference - Chicago, IL - Oct. 31st Nov. 3rd 2013







# ITALIA: A User's Manual for Lending and Borrowing Art Works

ARCS Inaugural Conference - Chicago, IL - Oct. 31st Nov. 3rd 2013



**Roma, Galleria Borghese**



**Tarquinia  
Museo Etrusco**





## *How logistic problems are affecting the **insurance/indemnity ?***

- Sometimes you have to use "unconventional" means of transport, maybe only for a short ride
- You cannot always use the required packing specifications
- You cannot always schedule the transport to avoid night storage or overnight stay





# ITALIA: A User's Manual for Lending and Borrowing Art Works

ARCS Inaugural Conference - Chicago, IL - Oct. 31st Nov. 3rd 2013







# ITALIA: A User's Manual for Lending and Borrowing Art Works

ARCS Inaugural Conference - Chicago, IL - Oct. 31st Nov. 3rd 2013







# ITALIA: A User's Manual for Lending and Borrowing Art Works

ARCS Inaugural Conference - Chicago, IL - Oct. 31st Nov. 3rd 2013







## ITALIA: A User's Manual for Lending and Borrowing Art Works

ARCS Inaugural Conference - Chicago, IL - Oct. 31st Nov. 3rd 2013



### From The Italian Guidelines ...

The task of the courier is to supervise the packing and transport of the artworks to be shipped on behalf of the lending institution ...

The real need to watch over the artworks at all times whilst in transit it is often debated. Some institutions insist that the courier is always with the loans on the truck or follow car and on the same flight ... for other institutions it is enough instead that the courier supervise packing, unpacking and installation ...

*The final choice about the procedure to be followed is obviously at the discretion of the Director of the lending museum.*

*... where is the truck?*







## ITALIA: A User's Manual for Lending and Borrowing Art Works

ARCS Inaugural Conference - Chicago, IL - Oct. 31st Nov. 3rd 2013

### Positive side effects ...

Even if this can give some issues with insurance and indemnity, it has though some positive side effects:

- More flexible shipping schedules
- Easier to combine transports and shipments
- Less follow cars
- Possible cheaper air-tickets







## From The Italian Guidelines ...

*“As the transit of an artwork can be subject to sudden and unexpected changes, the courier should never be in a position to look after any other person than himself and the artwork”*

*... but it is not always so !*







## Per-diem...

There are no precise rules about the per diem and each institution can make a different request. Normally it is a bit higher than the international standards varying from 100 to 150 euros per day.

Some institutions refers to a ministerial decree for public officers traveling abroad for service and this can be even higher than this.

*Check the loan agreement before signing it ... at that stage you can still discuss this!*







### **To know is to manage ...**

It is important to know all these issues in advance in order to work on them with the lender and agent ... To know is to manage.

Try to get as much information as possible from the lenders and agents about the logistic problems of the museum site and how they are planning to overcome these problems. The worst situation comes when these problems are not fully considered.

Check the loan agreement before signing it and discuss in advance with the lender any issue that can make the transit easier and smoother.





## ITALIA: A User's Manual for Lending and Borrowing Art Works

ARCS Inaugural Conference - Chicago, IL - Oct. 31st Nov. 3rd 2013



Logistics and Couriers: ***To know is to manage***

Antonio Addari

**ARTERIA**  
L'arte viaggia con noi