The background of the slide is a black field filled with numerous thin, bright red lines. These lines originate from the left side and fan out towards the right, creating a sense of motion and depth. The lines vary in length and brightness, with some appearing as sharp points of light and others as soft, glowing trails. The overall effect is reminiscent of a starburst or a dynamic light display.

## **Finding a Place for Bric-a-brac, Knickknacks and Ephemera within the Museum Archive**

Paul Brobbel,  
Len Lye Curator,  
Govett-Brewster Art Gallery, NZ

*Five Fountains and a Firebush*, Govett-Brewster Art Gallery, 2007

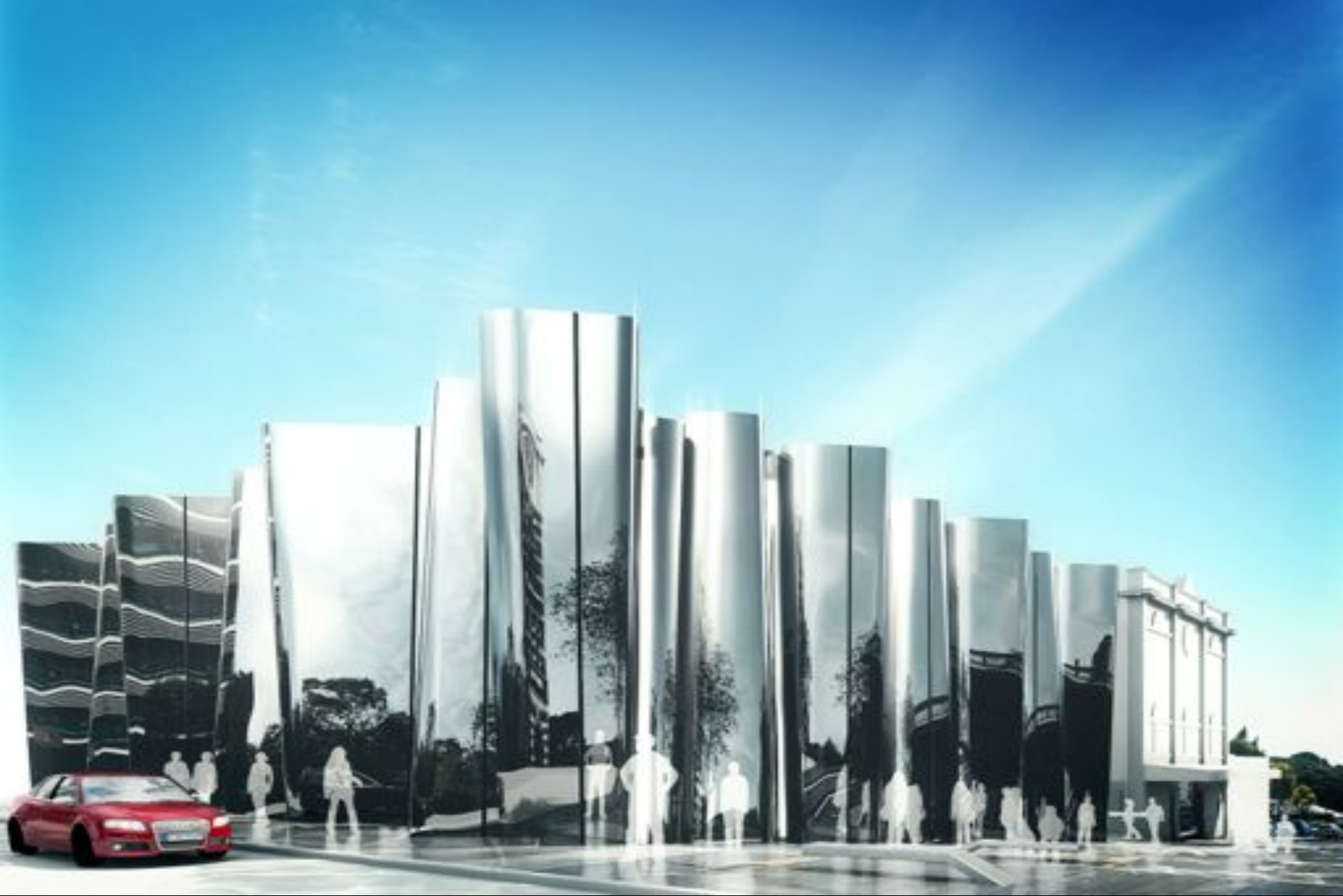


Govett-Brewster Art Gallery, New Plymouth, NZ

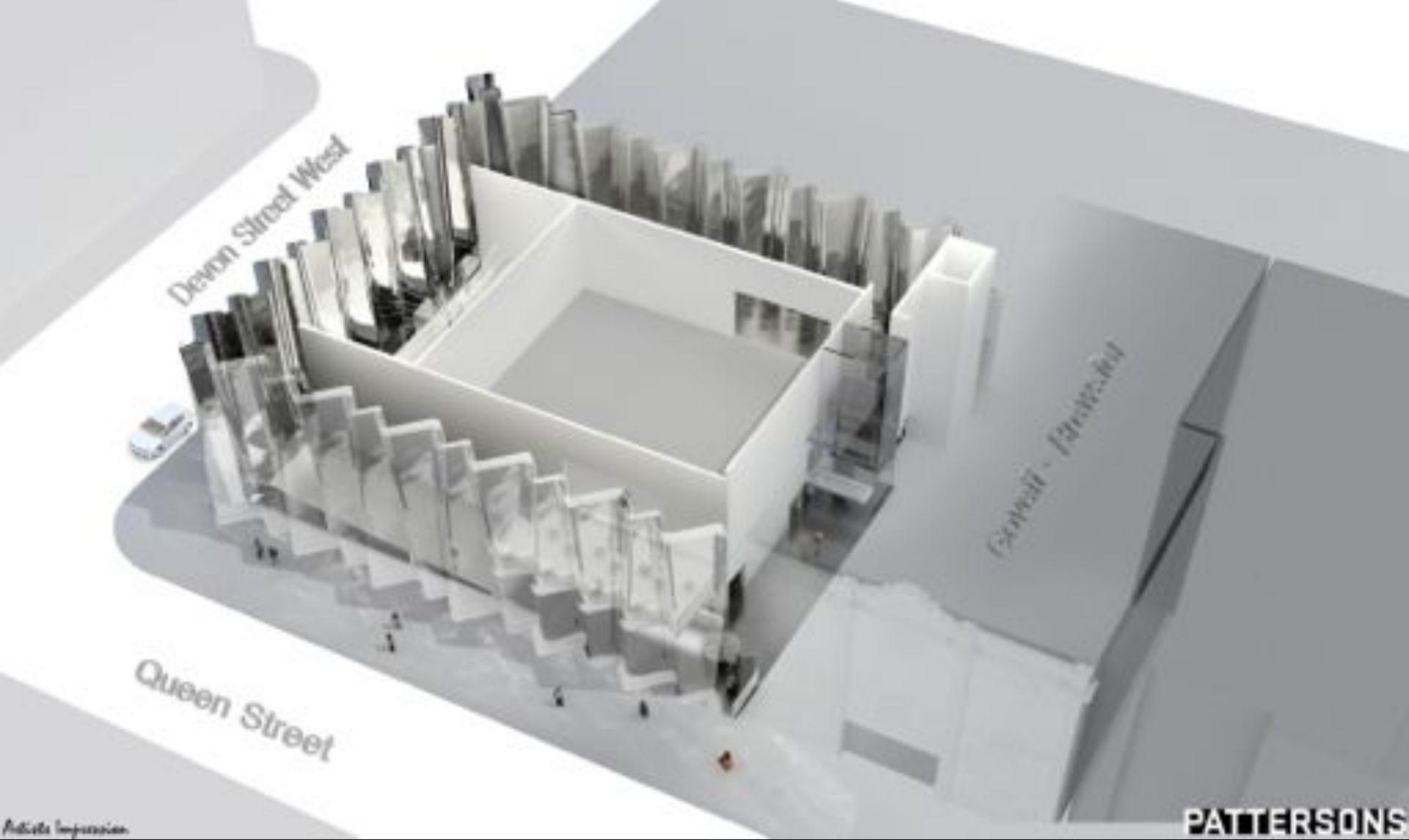


New Plymouth, NZ



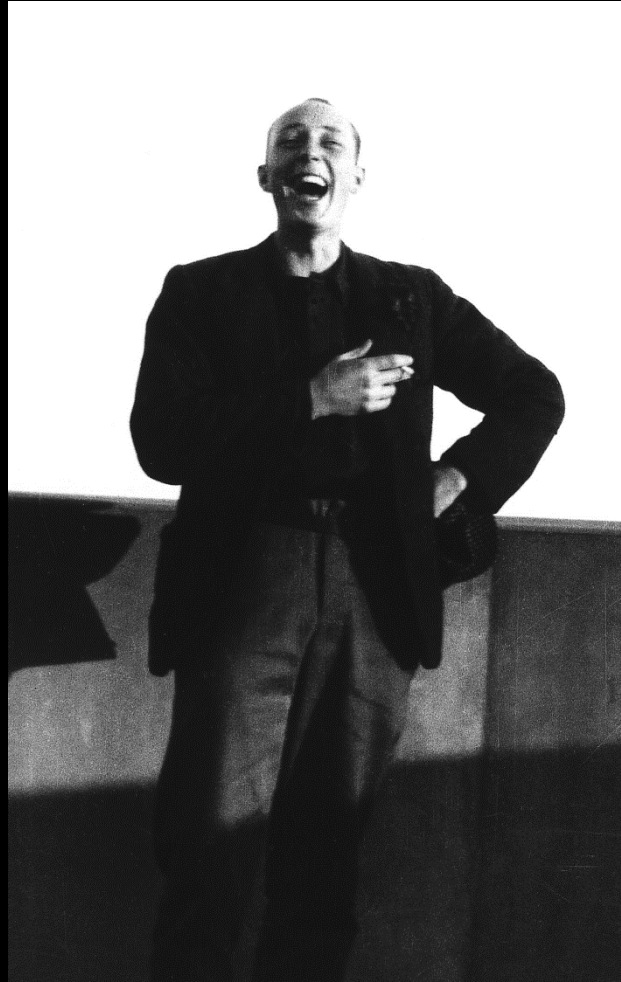


Len Lye Centre, opening 2015



Len Lye Centre, opening 2015

Len Lye, 1901-1980



Sydney, 1925

Len Lye, 1901-1980



London, 1937



Len Lye, 1901-1980



New York, 1961



*Unit*, 1924, marble



Sergei Eisenstein's filmmaking workshop, London, 1929



*A Colour Box*, 1935, 4 min, 35mm Dufaycolour, sound



Lye in studio making 'scratch' films





*Free Radicals*, 1958, 5 min, 16mm b&w, sound



*An Evening of Tangible Motion Sculpture, MoMA, 1961*



*Zebra*, 1965 (2008 reconstruction), fibreglass, motor

*Trilogy (A Flip & Two Twisters)*, 1977, stainless steel, motors

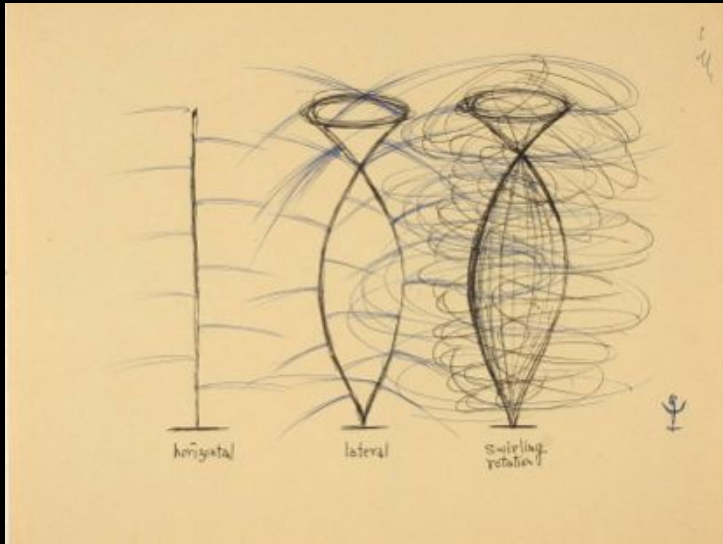


*Wind Wand Test, 1960, NYC*



*Wind Wand, 2000, New Plymouth, NZ*





*Waterwhirler Sketch, 1960s*



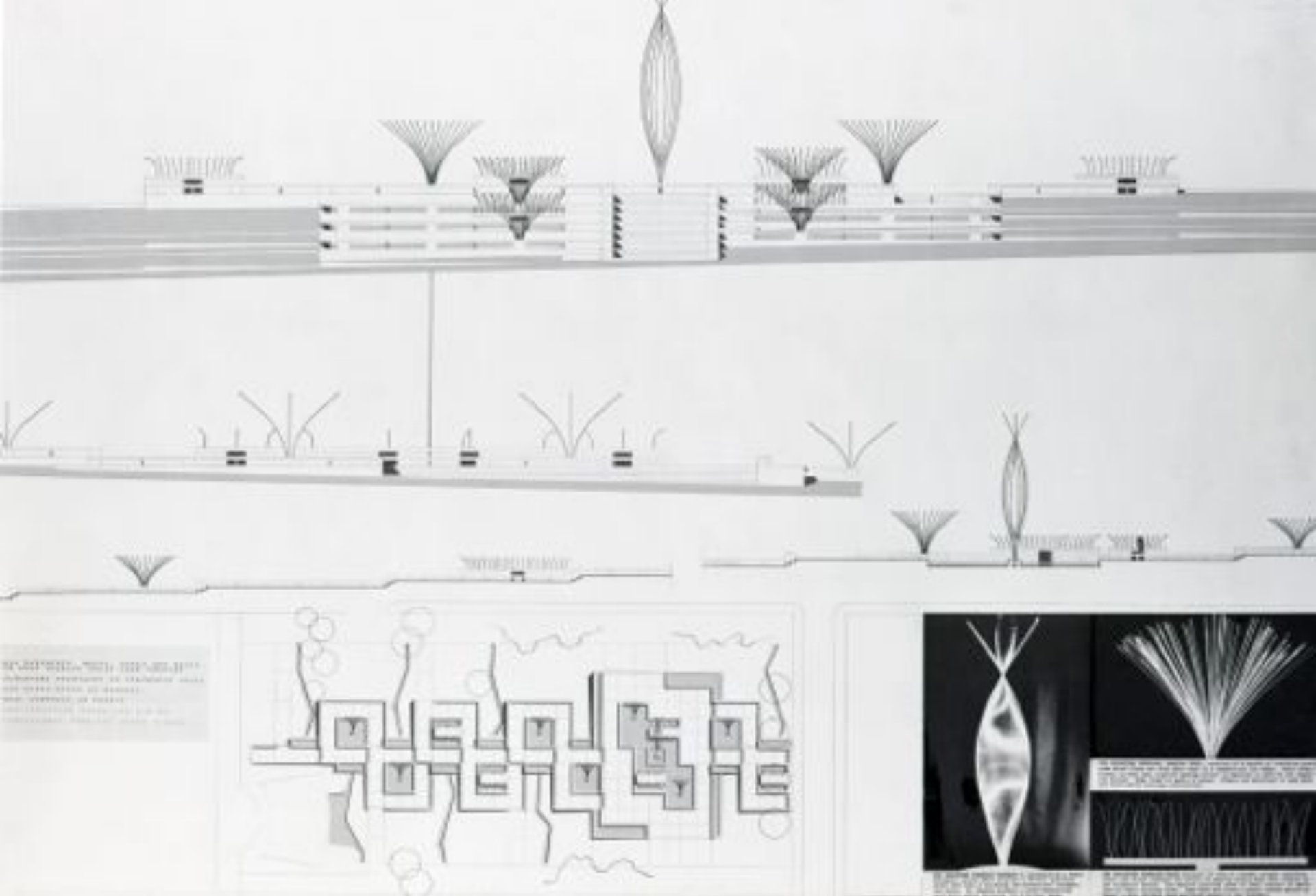
*Waterwhirler, 2006, Wellington, NZ*



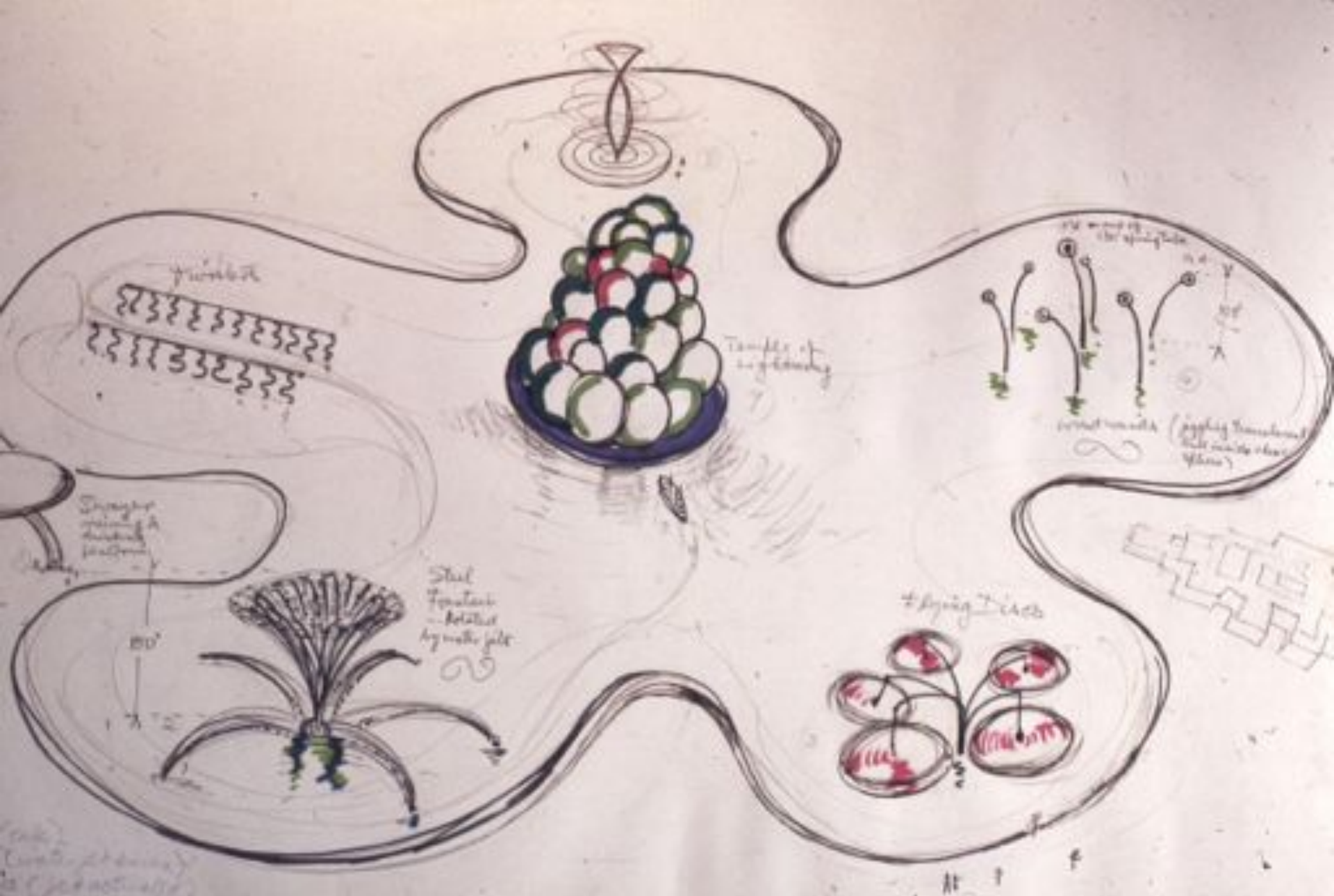
*Wind Wands, 1961, U. of Carbondale*



*Wind Wands prototype test, 2012, New Plymouth*

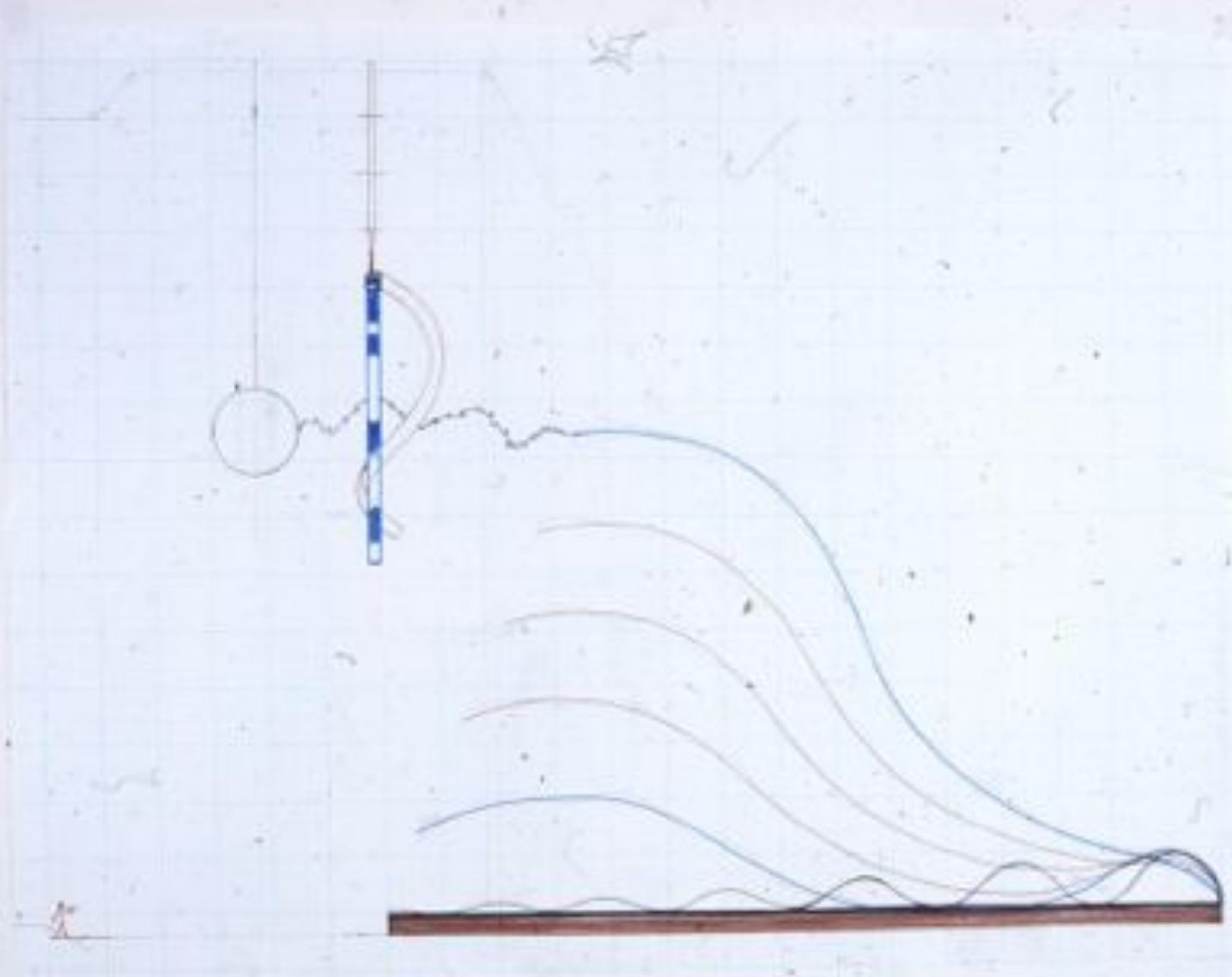


Seattle Civic Centre Fountain Competition, 1960-1961



'Temple Lake Project' sketch, 1960s





*'Sun, Land & Sea' sketch, 1960s*





Universe Walk (model), 1960s



*Lye in studio, NYC, 1960s*







The Len Lye Collection and Archive consists of 3,772 catalogue entries with an estimated total of 18,000 items. An inventory of the collection includes:

- 24 paintings
- 52 unique photograms
- 10 textile works
- 14 rare books
- Approximately 1,000 photographs, many documenting his sculpture
- 33 16mm film prints (some of which are included in the Govett-Brewster Art Gallery Collection)
- 12 linear meters of archival material, comprised of 120 boxes containing approximately 1,200 individual folders
- 16 exhibition-standard kinetic sculptures (two of which are included in the Govett-Brewster Art Gallery Collection)
- 530 audio tapes
- Approximately 11,000 slides
- 1,400 'doodles', drawings and prints
- Various materials from the artist's studio and
- Approximately 14 kinetic sculptures to be reconstructed or developed.



Len Lye Collection Store, Govett-Brewster, c. 1990s





Len Lye Collection Store, Govett-Brewster, c. 1990s



Len Lye Collection Store, Govett-Brewster, c. 1990s



Len Lye Collection Store, Govett-Brewster, c. 1990s



Len Lye Collection Store, Govett-Brewster, c. 1990s





Len Lye Collection Store, Govett-Brewster, c. 1990s



Len Lye Collection Store, Govett-Brewster, c. 1990s





Temporary Offsite Len Lye Collection Store, Govett-Brewster, 2013



Temporary Offsite Len Lye Collection Store, Govett-Brewster, 2013

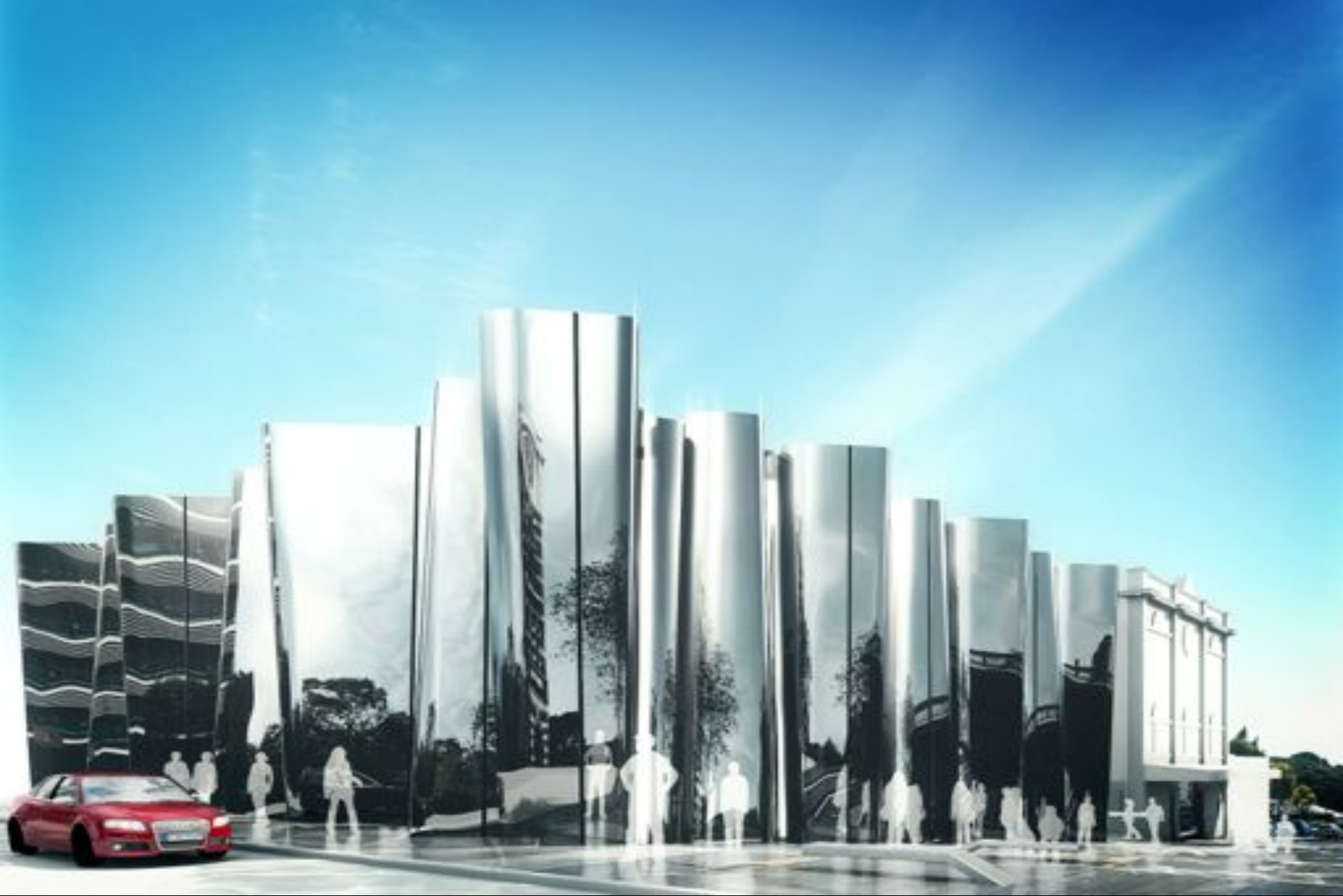


Temporary Offsite Len Lye Collection Store, Govett-Brewster, 2013

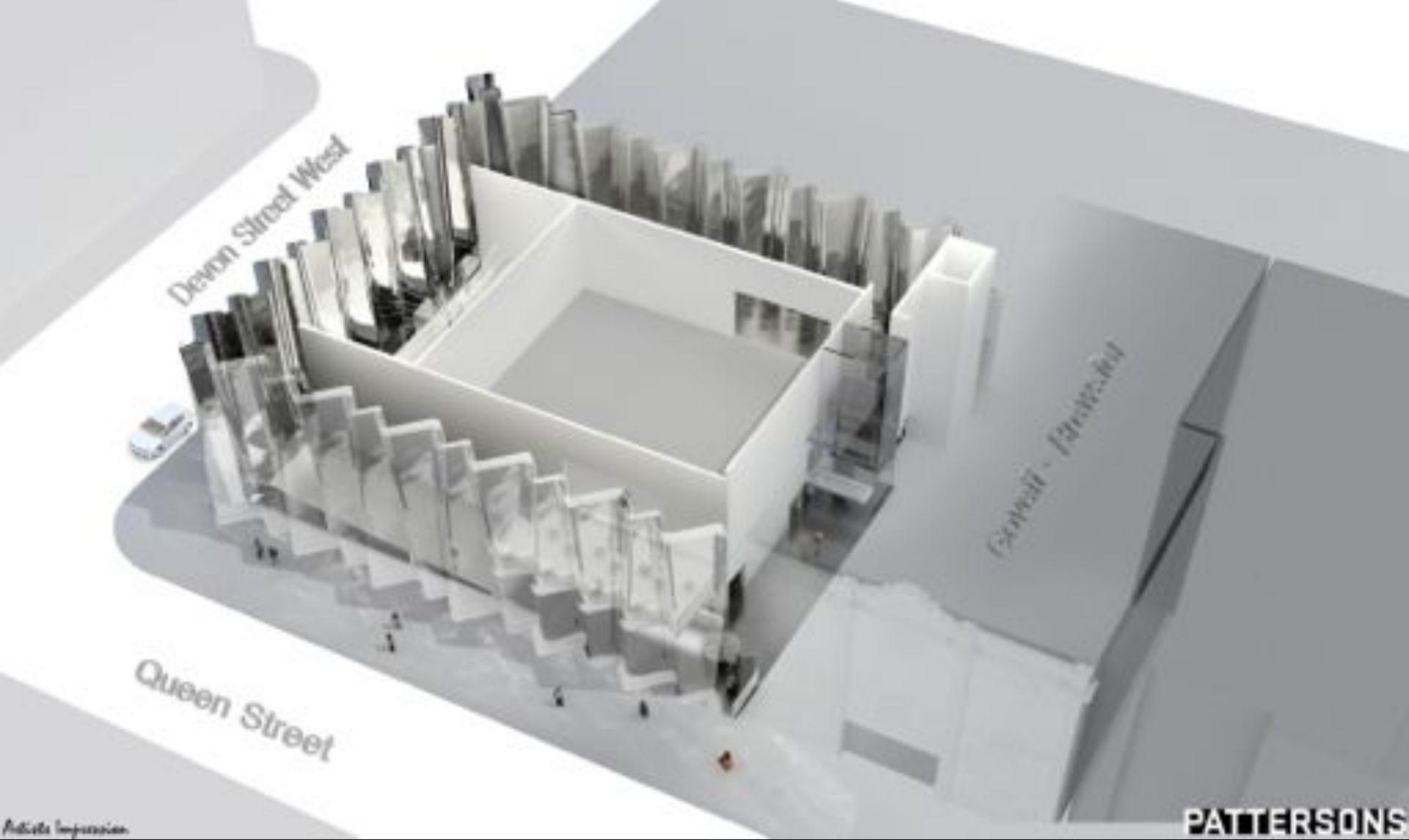


Temporary Offsite Len Lye Collection Store, Govett-Brewster, 2013





Len Lye Centre, opening 2015



Len Lye Centre, opening 2015





*Snow Birds Making Snow*, 1936, oil on board



*Land and Sea, 1977, acrylic on canvas*



*Polynesian Connection*, 1977, acrylic on canvas





*Marks & Spencer in A Japanese Garden, 1930, photogram*



*Georgia O'Keeffe, 1947, photogram*





*Self portrait, Ann Lye, Le Corbusier, Althea, Joan Miro, Alfred Bishop, 1947, photograms*



'Len Lye: Shadowgraphs', 2011 at Adam Art Gallery, Wellington, NZ



Film tools in 'Len Lye', 2008 at the Australian Centre for Moving Image



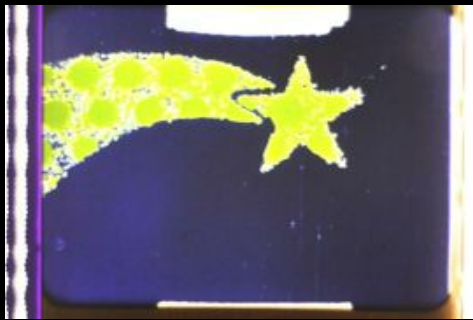
Stencils for 35mm films, c. 1930s





Stencils for 35mm films, c. 1930s





Stencils for *Trade Tattoo*, 1937 & *Swinging the Lambeth Walk*, 1939



0.3125

2

1/2" 10TPI

1/2" 10TPI

1/2" 10TPI

1/2"

1/2" 10TPI

1/2" 10TPI

1/2" 10TPI

1/2"

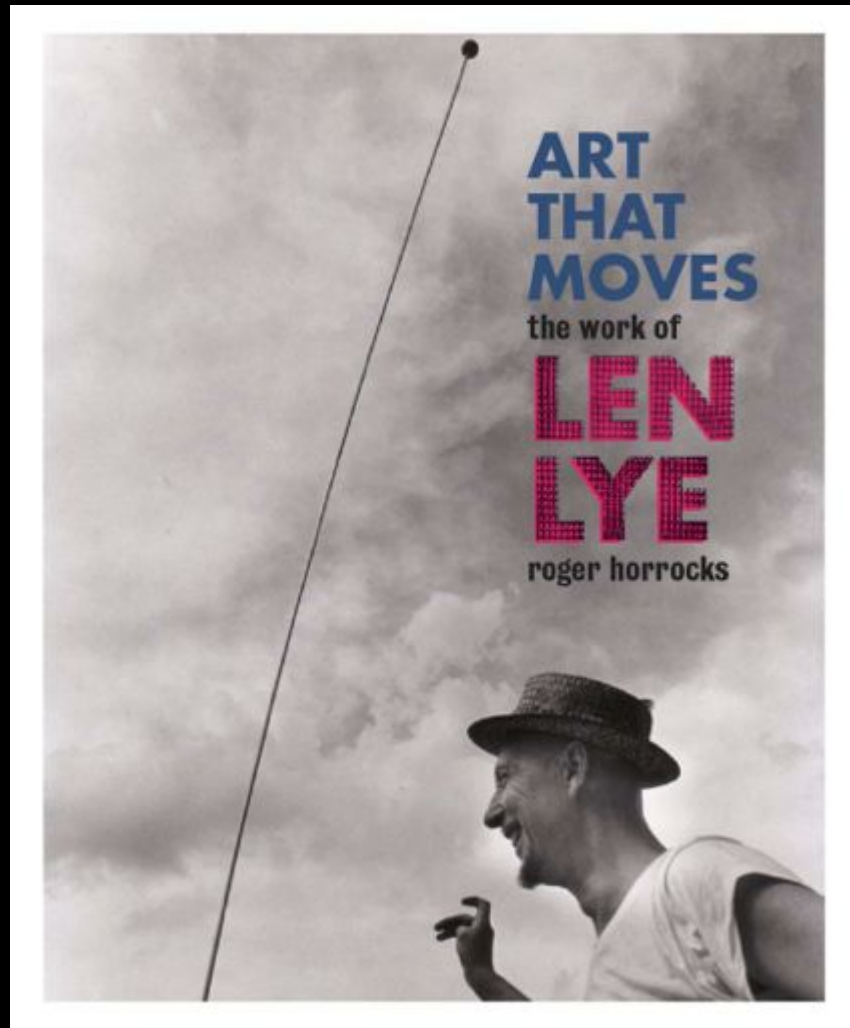
1/2"

*Handwritten:* 1/2" 10TPI

GENUINE HAND-PIPPED  
CUTTING  
SHARP AND DURABLE

Columbia

1/2" 10TPI



Roger Horrocks, *Art That Moves*, Auckland University Press, 2009



LEN  
LYE **FIVE  
FOUNTAINS**  
AND A **firebush**

1 DECEMBER 2007 – 24 FEBRUARY 2008



*Five Fountains and a Firebush, Govett-Brewster Art Gallery, 2007*





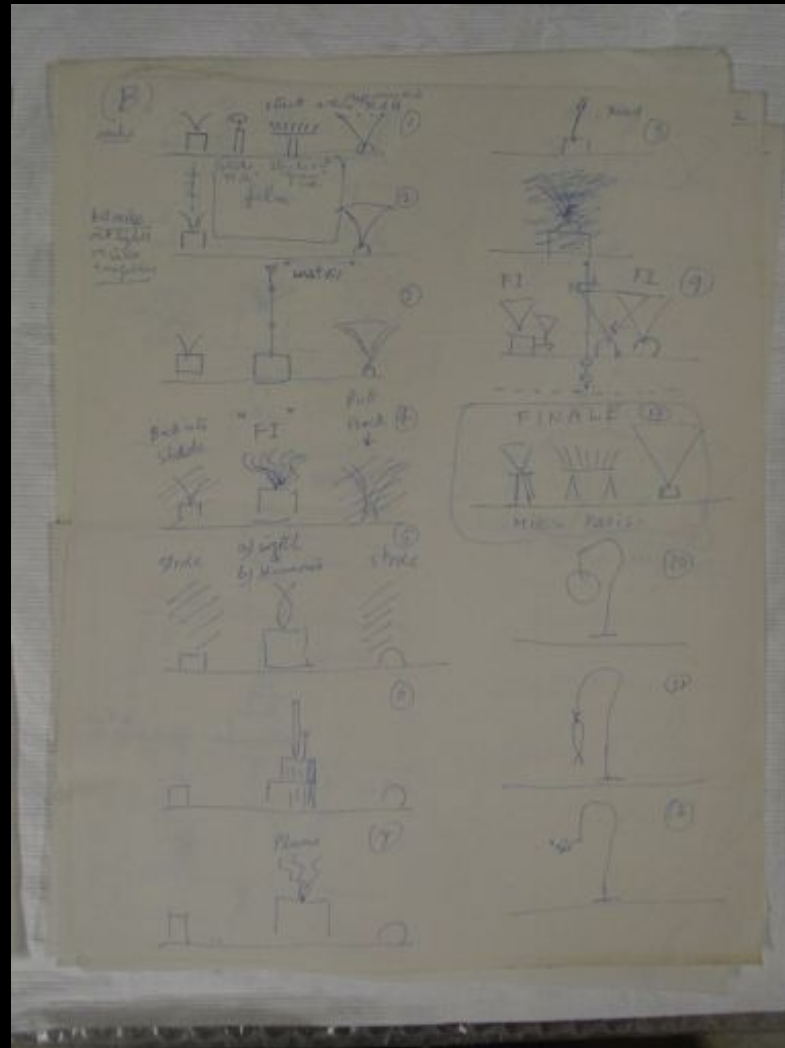
*Five Fountains and a Firebush, Govett-Brewster Art Gallery, 2007*



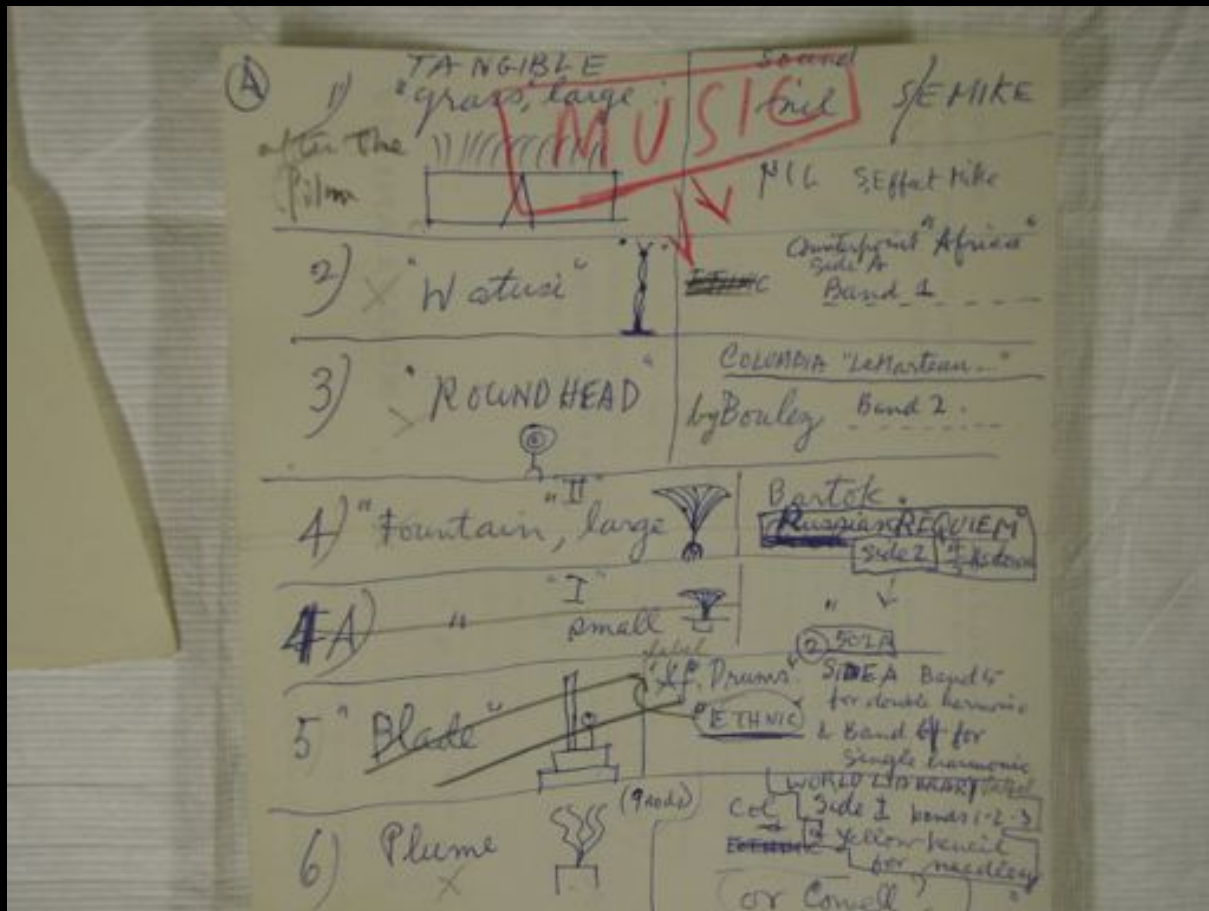
LEE LYS PROGRAM

TIME			
		1	Light on - audience closes
		2	Light off - stage lights Performance 5-10 min
		3	Scene 1 table off
		4	a) Stage lights on b) 4 pieces on c) Music on
5 min.		5	Hold 5 minutes
		6	Scene off (Delta)
10 min.		7	Introduction of Lee Lys (Delta)
		8	4 pieces received by Lee, Corp, Film, Tee
15 min.		9	File
		10	Callous and Machine prepared for demonstrations.
		11	Demonstrations
20 min.	Bin	a) Band	#1 side 4 BAND 2
25 min.	Bin	a) Ring	#2 side 1 BAND 9
30 min.	48 lights	a) Flame (Bin) / Fire (Bin)	#3 side 4 BAND 10
35 min.	48 lights	a) Machine (Bin) / Machine (Bin)	#4 side 4 BAND 10
40 min.	48 lights (48)	a) Musical	#5 side 2 BAND 5
45 min.	48 lights	a) Lights	#6 side 1 BAND 2
50 min.	48 lights	a) Lighting Machine	#7 side 4 BAND 1
	48 lights	a) Machine	#8 side 4 BAND 1
55 min.		12	Demonstration (Delta)

MoMA performance notes, 1961



MoMA performance notes, 1961



MoMA performance notes, 1961



*Fountain*, 1959 in 'Singular Visions', Whitney Museum of American Art, 2011-2012