

Logistics and Preparation in the Moving of Fragile Artifacts







































Relations 2001
Stanislav Libenský
and
Jaroslava Brychtová
cast glass with steel
structure
approx. 13 x 13 feet in 10
panels







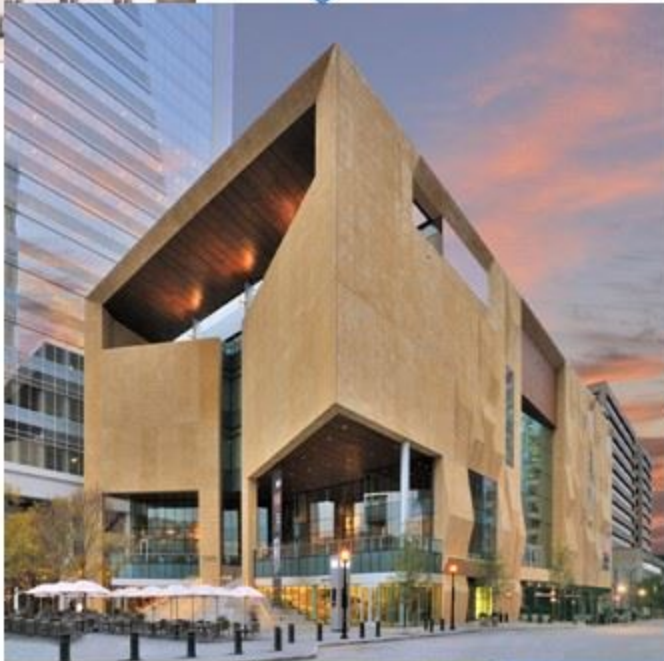








What to Expect When You're
Expanding:
The Mint Museum



In the Early Stages

- Start as far in advance as you are able
- Be involved in the initial process with the architects
- Think carefully about every function you perform
- How will you move artwork around the building?
- Be mindful of things that others are/are not asking for (your space could be cut to allow for gift shop storage)



In the Early Stages

- Start as far in advance as you are able
- Be involved in the initial process with the architects
- Think carefully about every function you perform
- How will you move artwork around the building?
- Be mindful of things that others are/are not asking for
- Dream big



In the Early Stages

- Start as far in advance as you are able
- Be involved in the initial process with the architects
- Think carefully about every function you perform
- How will you move artwork around the building?
- Be mindful of things that others are/are not asking for
- Dream big
- Allow for future growth AND make everything larger than you think you need
- Be prepared for cuts



Painting storage the y
in

In the Early Stages

- Start as far in advance as you are able
- Be involved in the initial process with the architects
- Think carefully about every function you perform
- How will you move artwork around the building?
- Be mindful of things that others are/are not asking for
- Dream big
- Allow for future growth AND make everything larger than you think you need
- Be prepared for cuts
- Build necessary equipment into your budget (lift, art carts)
- Don't forget exterior spaces (loading dock, outdoor sculpture space)
- Allow for future growth AND make everything larger than you think you need
- Be prepared for cuts
- Build necessary equipment into your budget (lift, art carts)
- Don't forget exterior spaces (loading dock, outdoor sculpture space)



Packing, Storing, and Relocating it All



If you hear nothing else during this presentation:

Have a **PLAN**,
think about likely **ISSUES**,
and then be **FLEXIBLE**



What's
the
plan?

Work plan (colors match the delivery location)

description	Location	Don't Pack (Reason)	Comments
		PHOTO DON'T PACK	INSTALL
5.42.3 - Kohlmeier, Mrs. Ida - Shapescape - 1981	Table		
5.42.4 - Kohlmeier, Mrs. Ida - Synthesis Print - 1993	Table		
65.75 - Walker, Kara Elizabeth - Freedom: A Fable - 1997	W		
66.91 - Turk, Elizabeth - Marble Collar #7, Huntington Pier - 2003	W		
81.195.1-41 - Dubuffet, Jean - Ranque De l'hourloupe - circa 1975	W		
87.97A-B - Katchadourian, Nina - Salt and Pepper Shakers	W		
empty frames			Pink Label--- but MATTIN AND FRAMING (instead of 4 th floor storage) Box numbers: 8, 9, 4, 5, 6, 8, 9, 10, 11, 12, 13, 14, 15, 16, 17, 18, 19, 20
60.36.23 - Sargent, John Singer - At Chioggia	e	FRAME	Possible reinstall, if so it is unframed and will need to be framed
88.42.8 - Hoff, Stacy - Book Length - 2003	s		reinstall, currently unframed and will need to be framed
88.65.1 - Edouard Vuillard - Madame Hessel Lisant	e	FRAME	Possible reinstall, if so it is unframed and will need to be framed
08.43.6 - Kollwitz - Tanz um die guillotine / Die Carmagnole	j	FRAME	Possible reinstall, if so it is unframed and will need to be framed
08.43.7 - Kollwitz - Bewaffnung in einem gewolbe	L	FRAME	Possible reinstall, if so it is unframed and will need to be framed
08.43.2 - Kollwitz - Pflugschere und weiss	L	FRAME	Possible reinstall, if so it is unframed and will need to be framed
08.28.1 - Forer, Taj - Young Farmer	F	FRAME	Reinstall
08.28.2 - Forer, Taj - Tree House	F	FRAME	Reinstall

4th Floor Storage



2010.92 - Noffke, Gary Lee - Capitalist Rosary - circa 1970s



2005.50.1 - Frank, Peter - Necklace - 2005



2003.130.1-6 - Blävarp, Liv - Five Bracelets and box - circa 1985

Box labels

Boxes, packed and stored







Chihuly Chandelier

Libensky—top 1/2



Flat files





We moved in July .

..

Staging boxes to load



Debris from unpacking



Object Number:	
Description:	
Current Location:	
Move to:	

**THIS OBJECT IS IN THE
WRONG PLACE AND NEEDS
TO BE MOVED.**

**BEFORE YOU LEAVE THIS
CONTAINER, UNPACK THE
OBJECT OR NOTIFY A**



**Remove
Anything
from
This Box**

Objects in this Box are
being tracked by Box
Location. See a registrar if



Overfull Storage



**Remove
Anything
from
This Box**

Objects in this Box are
being tracked by Box
Location. See a registrar if



Overfull Storage



What to Expect When You're Expanding: The Center for Puppetry Arts

Athena Smith, Collections Manager

Expansion Overview

- ▶ *Believe in Make Believe Campaign*
- ▶ Jim Henson Donation
- ▶ New Museum
- ▶ New Library
- ▶ New Collections Storage



Project Overview

- ▶ Deinstall Permanent and Temporary Exhibition Galleries
- ▶ Condition check and work with conservators to prepare all puppets for new Global and Henson Galleries
- ▶ Henson Conservation Project (500+ objects)
- ▶ Manage off-site, warehouse, conservation, library, and 3rd Floor Storage
- ▶ Install new exhibitions
- ▶ Move Library/Archives collections into new Library
- ▶ Consolidate multiple storage sites into new collections storage

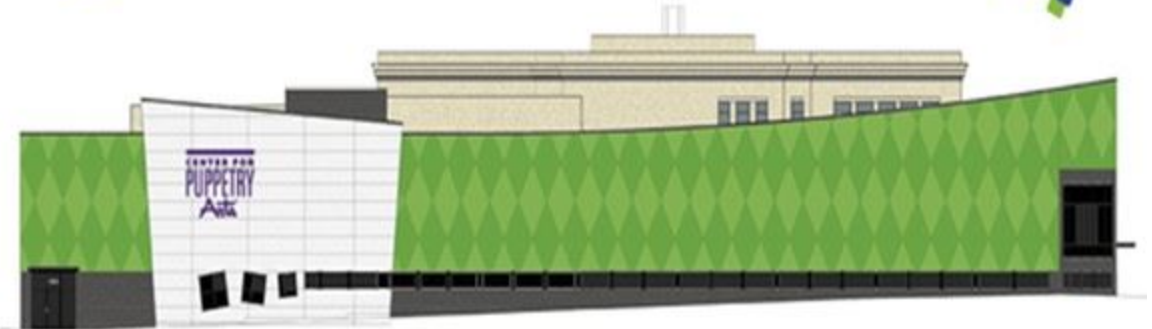
What has been accomplished...

- ▶ Deinstalled all exhibitions
- ▶ Objects have been shuffled on-site/off-site multiple times
- ▶ Conservation work for new exhibitions 100% and for Henson project 65% complete
- ▶ As of today, new museum opened
- ▶ New Library space is complete
- ▶ New collections storage is complete and shelving has been ordered

CENTER FOR
PUPPETRY
Arts

Believe
in make believe
A CAMPAIGN OF TRANSFORMATION

GRAND OPENING!



SAT, NOV 14

Things to consider

- ▶ Before anything can start, what are the limitations of your current building and staff?
- ▶ What should remain on-site?
- ▶ Is your Emergency Plan updated?
- ▶ Should you institute any loan or acquisition moratoriums?
- ▶ Don't be budget conscious when pitching the initial plan
 - ▶ What type of equipment do you need for the new storage/museum?
 - ▶ Assess collection and prioritize storage needs



The background features abstract, overlapping geometric shapes in various shades of green, ranging from light lime to dark forest green. The shapes are primarily triangles and quadrilaterals, creating a dynamic, layered effect. The central text is positioned within a white, trapezoidal area that is slightly darker than the surrounding background.

How did I make this happen?

How did I make this happen?

- ▶ Staff Limitations: **Cross train staff** and ask for help
 - ▶ Interns
 - ▶ Museum Dept training
 - ▶ Registrar Reinforcement Crew
 - ▶ Production
 - ▶ Facilities
- ▶ **DropBox Pro** is worth every penny (\$99) for 1TB of space



How did I make this happen?

- ▶ **Removable labels** go a long way in organizing
 - ▶ Conservation
 - ▶ Henson Approval
 - ▶ Off-Site
- ▶ Staff/interns can immediately know what's the status of box contents

Purple = Approved by Henson, ready to go off-site

Yellow = To be conserved

Pink = Conserved, waiting for Henson approval

How did I make this happen?

- ▶ Assessed what could go off-site and what needed to remain on-site
- ▶ **Creative storage solutions**
- ▶ Built numbered crates to house textile boxes (16 boxes/crate)
- ▶ Organize off-site to make move easier
- ▶ Keep exhibition objects on-site, if possible
- ▶ Tracking







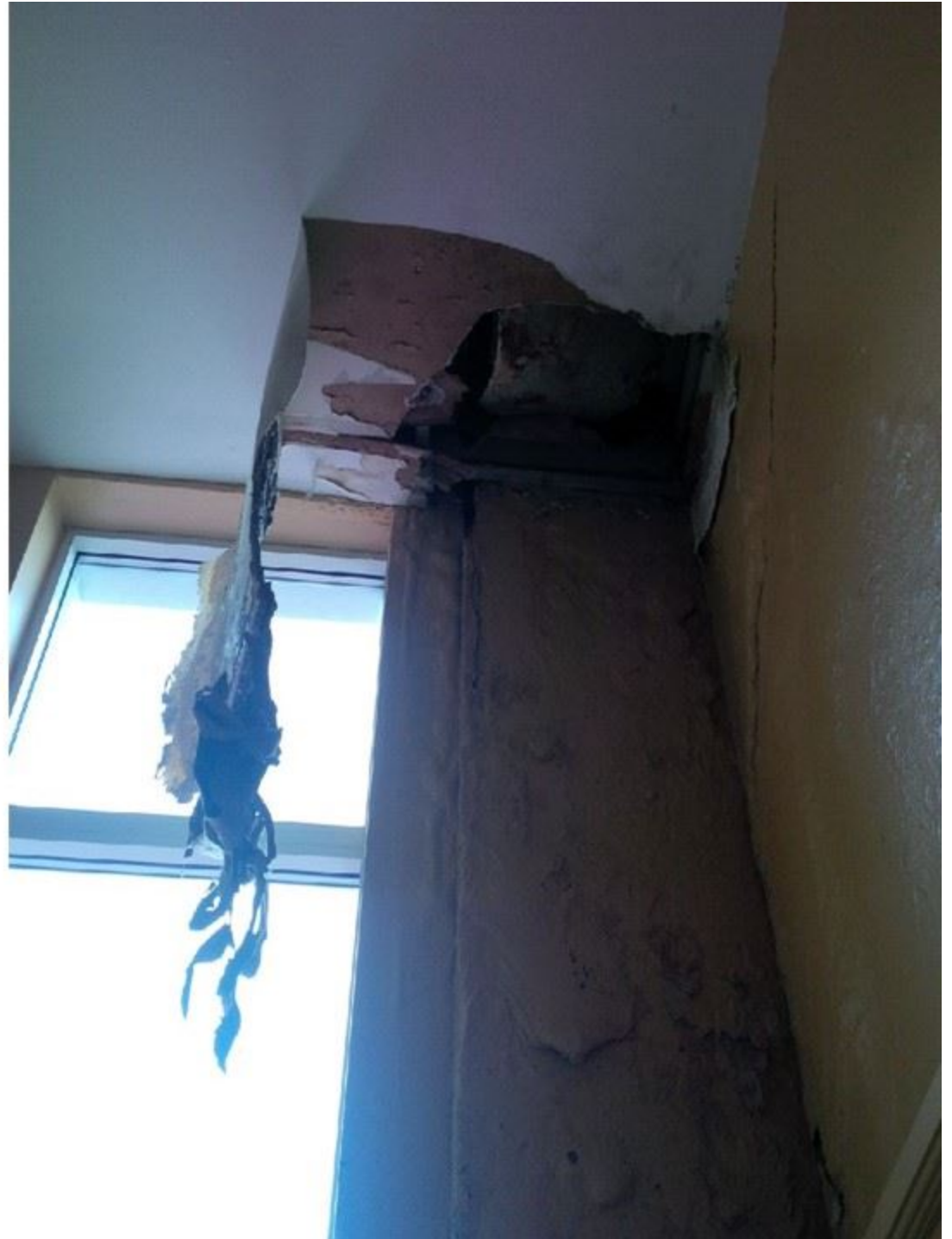


The background features abstract, layered green geometric shapes. On the left, a single green shape tapers to a point. On the right, a complex arrangement of overlapping translucent green polygons in various shades (from light lime to dark forest green) creates a sense of depth and movement. The text 'The Unexpected' is centered in a clean, green, sans-serif font.

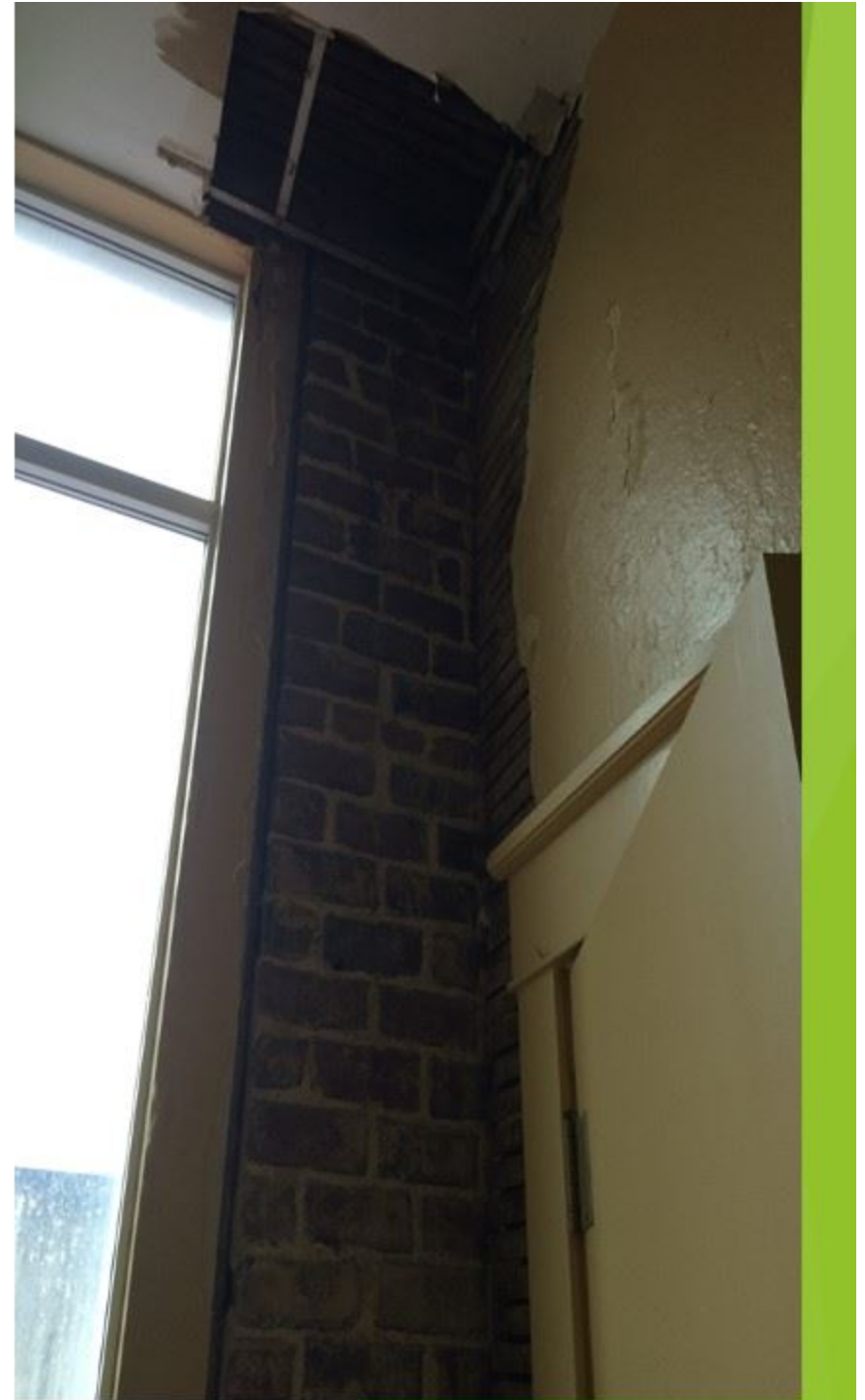
The Unexpected

The Unexpected

- ▶ Construction/budget is not based on your needs
- ▶ We're getting a new X soon, so I don't want to repair the current problem
- ▶ What this means?? **UPDATE YOUR EMERGENCY PREPAREDNESS PLAN**



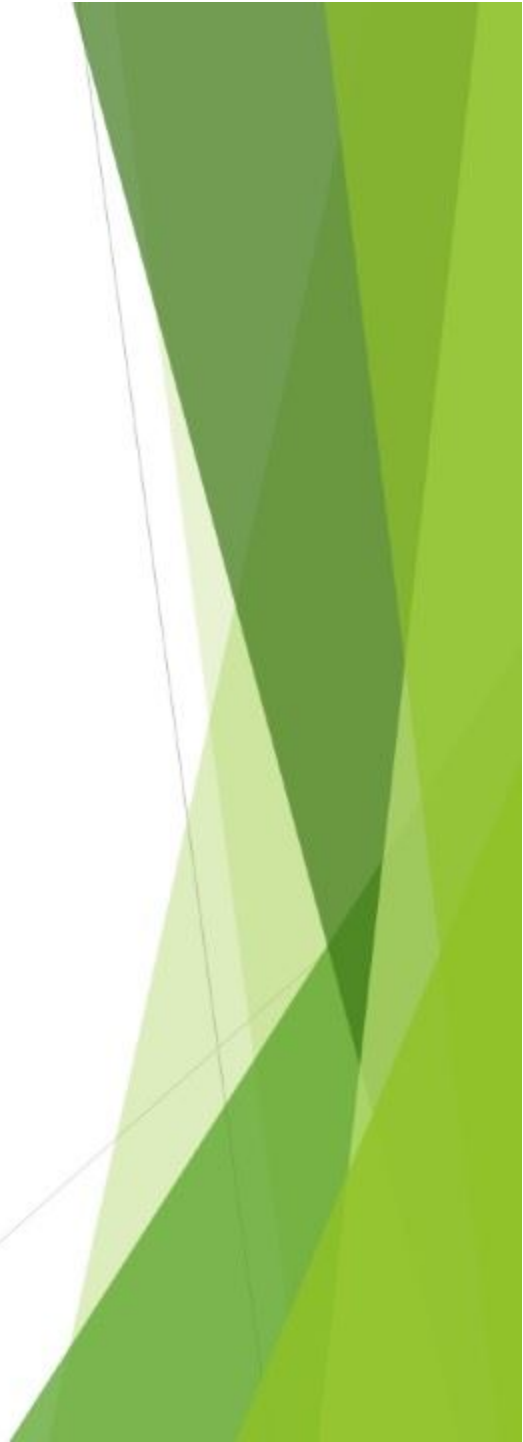
Do indoor water features increase property value?



The Unexpected

- ▶ Building **Limitations**
- ▶ Measure everything, including molding
 - ▶ Then measure again
- ▶ Communication with construction staff is key
 - ▶ **Clearances** for temporary walls, doors, etc.
 - ▶ Have a plan B ready for moving collections around the building
 - ▶ Be prepared for problems after construction starts





DO NOT
STACK

ARTIFACT

Do not move
without
Museum Staff
present

The Unexpected

- ▶ Remember that initial, second, third, fourth construction schedule? **Ha!**
- ▶ The storage situation got real











Remember how we said
sometimes you just have
to laugh? This is one of
those times...



The Unexpected

- ▶ Buying sprees
- ▶ 2014 was a record year for new acquisitions
- ▶ Moratorium implemented for 2015



Last Thoughts

- ▶ Think big, knowing you will have to make cuts
- ▶ Be pro-active as much as possible rather than retro-active
- ▶ Set an organization system at the beginning for as many aspects of the project as possible
 - ▶ Tracking
 - ▶ Labels
 - ▶ Storage
- ▶ Be flexible! Things will inevitably go wrong, so have Plan B always in place. It doesn't hurt to have Plan C as well
- ▶ Be prepared for delays. Nothing is completed on schedule
- ▶ Know that the initial plans for constructions will change. Your new museum/storage/building will not look like the initial drawings due to problems along the way. Set priorities and know when to compromise.
- ▶ Keep a positive attitude and good sense of humor