



ARCS

ASSOCIATION OF REGISTRARS
AND COLLECTIONS SPECIALISTS



Latin America Shipping Q & A;



MÉXICO

DOES MEXICO

require any **special export** and/or
import permit for cultural artifacts, like
works of art?





DOES MEXICO

require any **special export** and/or
import permit for cultural artifacts, like
works of art?



WHERE DO CUSTOMS

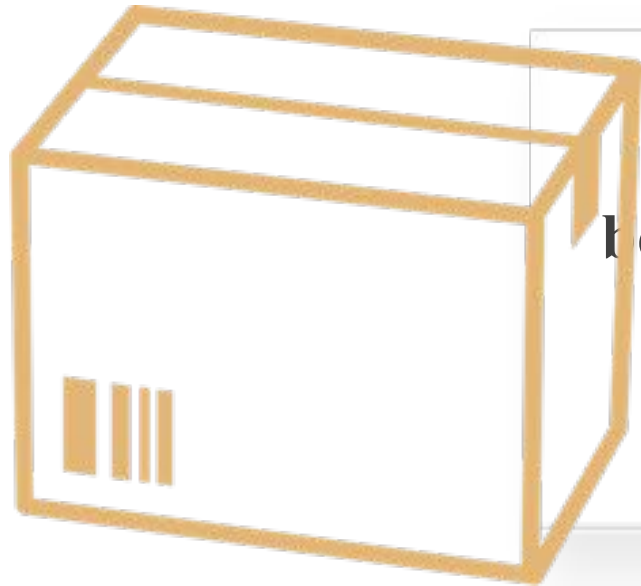
inspections take place?



WILL COURIERS

have access to the **cargo facility?**





CAN THE SHIPMENTS
be handled prior to customs review?



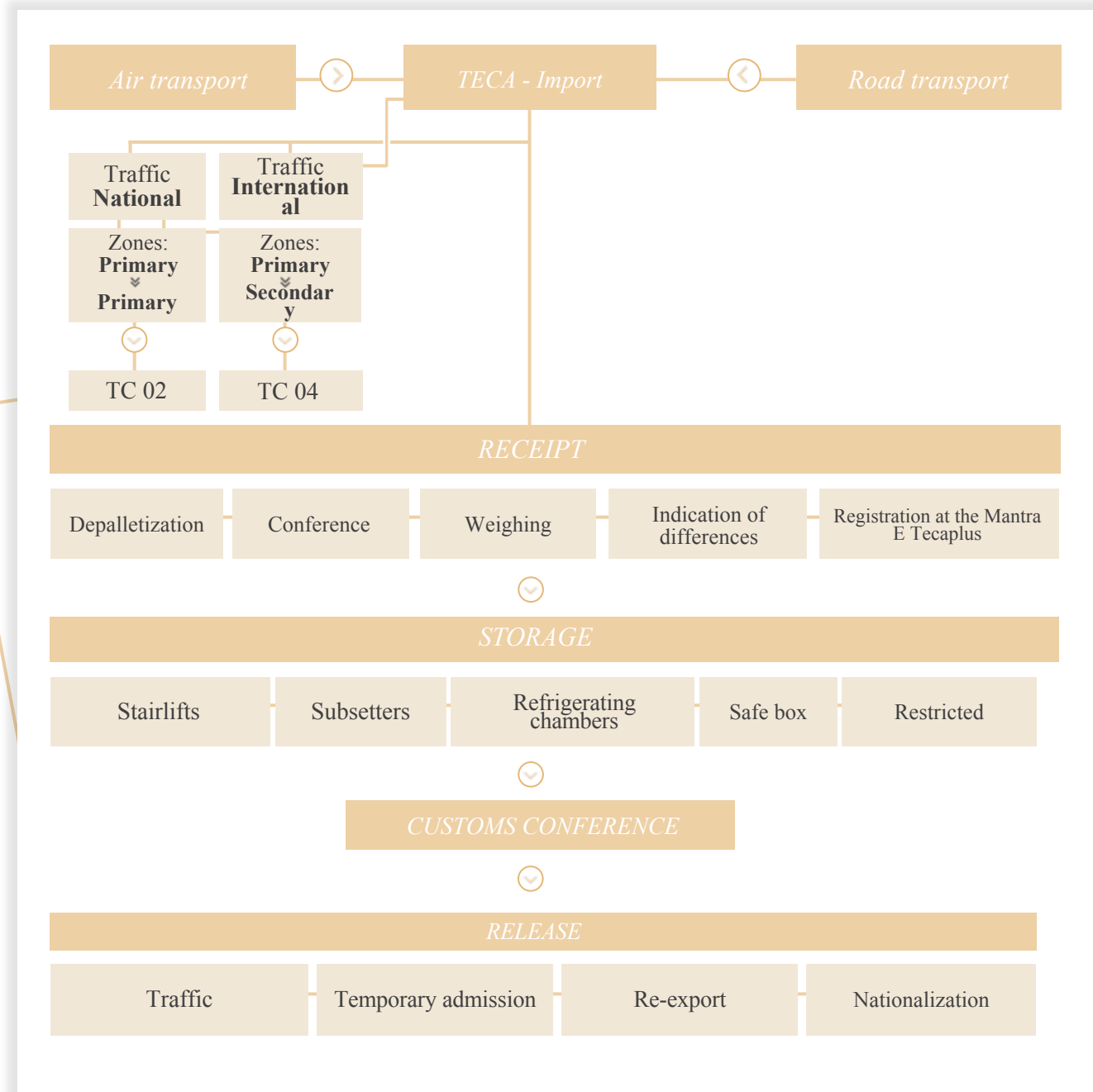
BRAZIL



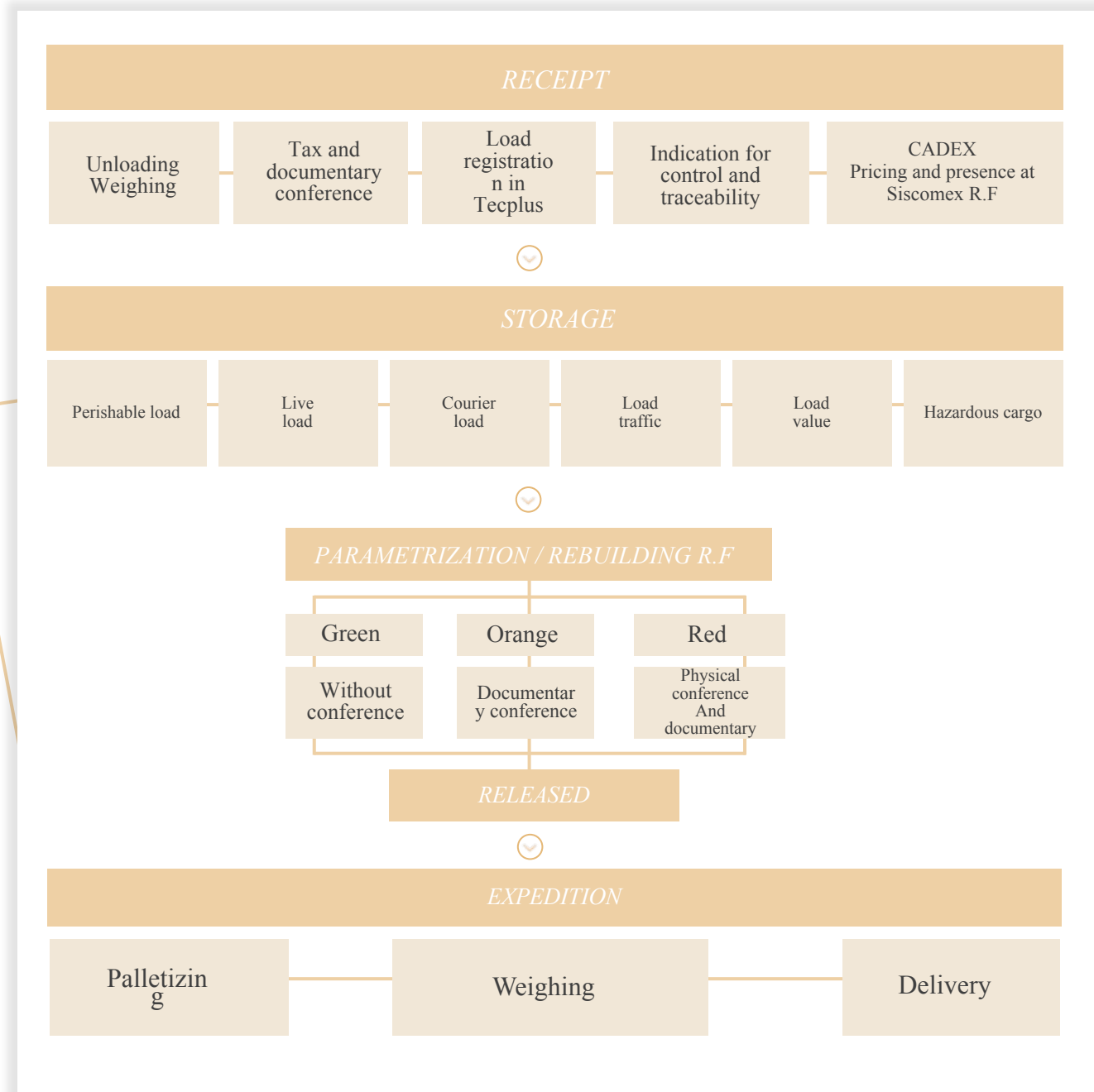
Common Issues in Brazil:

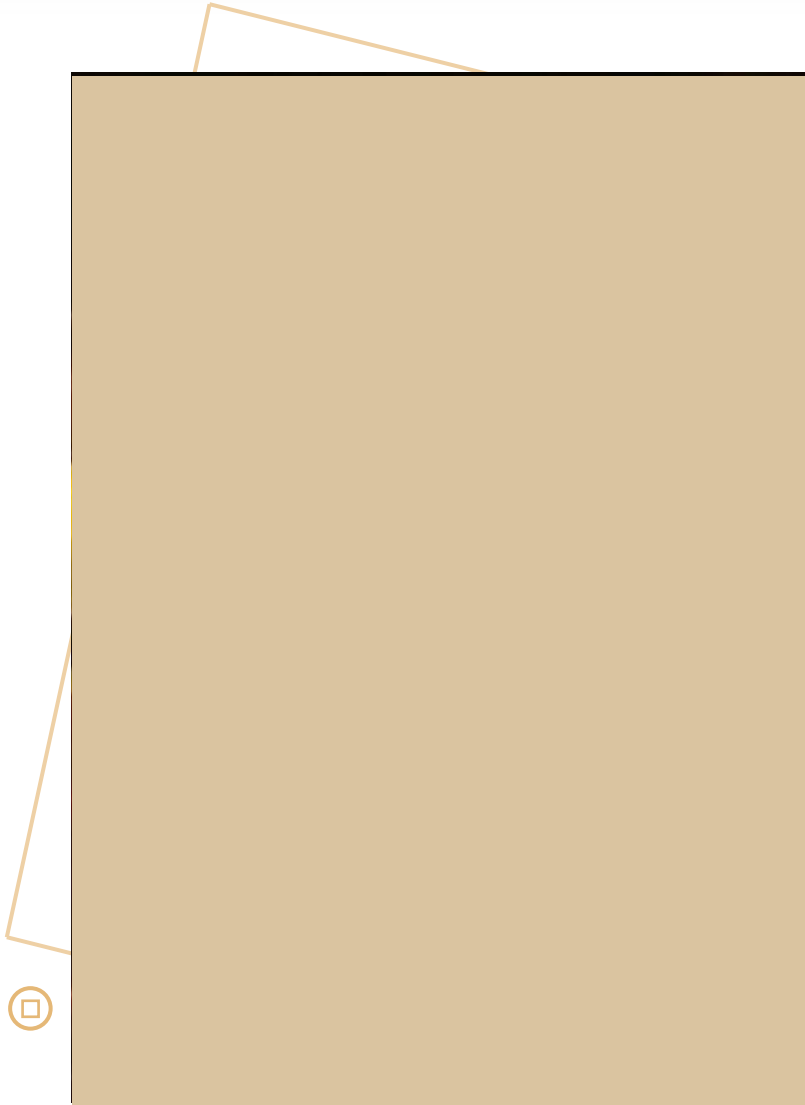
- Customs Process
- Air Freight
- Courier Assistance
- Crating
- Packing

Customs Process:
IMPORTATION



Customs Process:
EXPORTATION





Tarmac Supervision?

The agents in Brazil are not allowed to do that. However, it is possible to contract a company inside the airport to supervise crates from the cargo terminal to the airplane.

CÂMARA	NATUREZA IATA	T°C
IMC01	PED - FÁRMACO	16°C a 22°C
IMC02	PED - FÁRMACO	2°C a 8°C
IMC03	PED - FÁRMACO	2°C a 8°C
IMC04	PED - FÁRMACO	2°C a 8°C
IMC05	PED - FÁRMACO	9°C a 15°C
IMC06	PED - FÁRMACO	2°C a 8°C
IMC07	PED - FÁRMACO	2°C a 8°C
IMC08	PEC	9°C a 15°C
IMC09	PEB	2°C a 8°C
IMC10	PEB	2°C a 8°C
IMC11	PEC	9°C a 15°C
IMC12	PEB	2°C a 8°C
IMC13	PEA - FÁRMACO	-18°C a 0°C
IMC14	PEA	-18°C a 0°C
IMPS01	PED - FÁRMACO PS	16°C a 22°C
EXC01	PED	16°C a 22°C
PIC01	PEB - DG	2°C a 8°C
PIC02	PEB - DG	2°C a 8°C
PIC03	PEB - DG	2°C a 8°C
COC01	PEB - COURIER	2°C a 8°C
COC02	PEB - COURIER	-.18 a 0°C

Storage Solution at GRU Airport



Customs Procedures:



The **Brazilian customs** work periods are:

- 10 am – 05 pm;
- 07 pm – 07 am;
- Monday - Friday



The day shift is preferred as all people involved are aware of our issues.



Customs clearance takes a while so work with early morning flights is not a good idea if we consider the shift changes





Air Freight:

Each office has their own rules regarding this issue and in Brazil it is not possible to negotiate a fixed rate. Sometimes we have a variation between the estimates and the execution. We are working hard with all airlines to change this, and, so far, Lufthansa has already adjusted their billing policy.

Packing Standards:

What is the “museum standard” in Brazil?

- 1. Plywood with 15 mm to build the crate;
- 2. Styrofoam with 25mm;
- 3. Foam with 50 mm;

Important: Some museums have their own standards, like MASP.





Frequently

Asked

Questions

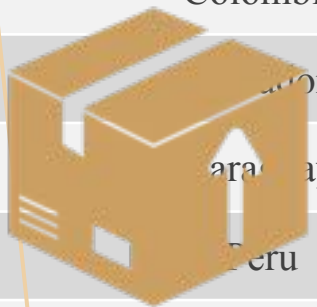
IS TARMAC ACCESS

granted to agents to supervise a shipment being loaded in the airplane? Is courier supervision allowed in the **cargo facility at the airport?**



<i>COUNTRY</i>	<i>ANSWER</i>
Argentina	Must request a special permit 10 days in advance. Yes, it is allowed.
Bolivia	Must request a special permit 10 days in advance. Yes, it is allowed.
Brasil	No. Yes, it is allowed.
Chile	Must request a special permit 10 days in advance. Yes, it is allowed.
Colombia	Must request a special permit 10 days in advance. Yes, it is allowed.
Equador	Must request a special permit 30 days in advance. Yes, it is allowed.
Paraguay	Yes, there is access to both Tarmac and Airpot Cargo facility.
Peru	Must request a special permit 15 days in advance. Yes, it is allowed.
Uruguai	Must request a special permit 30 days in advance. Yes, it is allowed.

COUNTRY	ANSWER
Argentina	Must request a special permit 10 days in advance. Yes, it is allowed.
Bolivia	Must request a special permit 10 days in advance. Yes, it is allowed.
Brasil	At the airport. Yes, it is allowed.
China	Must request a special permit 10 days in advance. Yes, it is allowed.
Colombia	Must request a special permit 10 days in advance. Yes, it is allowed.
Cuba	Must request a special permit 10 days in advance. Yes, it is allowed.
Curaçao	Yes, there is no special permit required.
Peru	Must request a special permit 15 days in advance. Yes, it is allowed.
Uruguay	Must request a special permit 30 days in advance. Yes, it is allowed.



WHERE:

Customs inspections take place? Can customs **inspect crates** at museums?



<i>COUNTRY</i>	<i>ANSWER</i>
Argentina	At the airport of departure. No.
Bolivia	At the airport of departure. No.
Brasil	At the airport of departure. No.
Chile	At the airport of departure. No.
Colombia	At the airport of departure. No.
Equador	At the airport of departure. No.
Paraguay	At the airport of departure. Yes must be requested 15 days in advance
Peru	At the airport of departure. Yes must be requested 15 days in advance
Uruguai	At the airport of departure. No.

Is there a standard clearance time in Latin America or does it vary by country ?

How soon before a shipment do I need to start loan agreements ?

Do countries in Latin America and the US have similar standards in place for permits. (i.e. fish and wildlife, etc.)?

What is a standard timeframe to export out of Latin America based on required permits?

Do Latin American countries adhere to ICCP standards for wooden crates? What are their requirements?

Do most countries require shippers to weigh cargo upon arrival?

What are documentation requirements for shipments to Latin America? Do we need originals, multiple copies, color images, etc.? How far in advance of the shipment's departure are these documents required?



Do couriers need visas and if so, what kind? How long do they take to receive and what is the process?

Can couriers witness pallet build up / breakdown?

Do warehouses in Latin America have the same or similar standards when it comes to climate control and security protocols?

Do art transport trucks have climate units? Lift gates?

Are there ICEFAT or ARTIM agents in Latin America? Are there standards that Latin American agents adhere to? What are they?

Are standards for art handling, storage, climate control, etc. consistent with those of the US and Europe?





Other

Questions





ARCS

ASSOCIATION OF REGISTRARS
AND COLLECTIONS SPECIALISTS



THANK YOU

