



# LIGHTEN UP

ENHANCING THE VISITOR EXPERIENCE



Smithsonian  
*National Postal Museum*

# PHILATELY



**“Taken from the Greek *philos*, loving + *ateliaia*, exemption from (further) tax, taken as the equivalent of postage paid; the collection and study of postage stamps, postmarks, stamped envelopes...”**



## SMITHSONIAN NATIONAL POSTAL MUSEUM

LOWER LEVEL OF THE POSTAL SQUARE BUILDING



## WILLIAM H. GROSS STAMP GALLERY

OPENED IN 2013 WITH 7 NEW GALLERIES



- Museum envelope Improvements
- Gallery specific solutions
- Object level protection



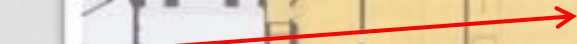
**Original museum  
lower level**



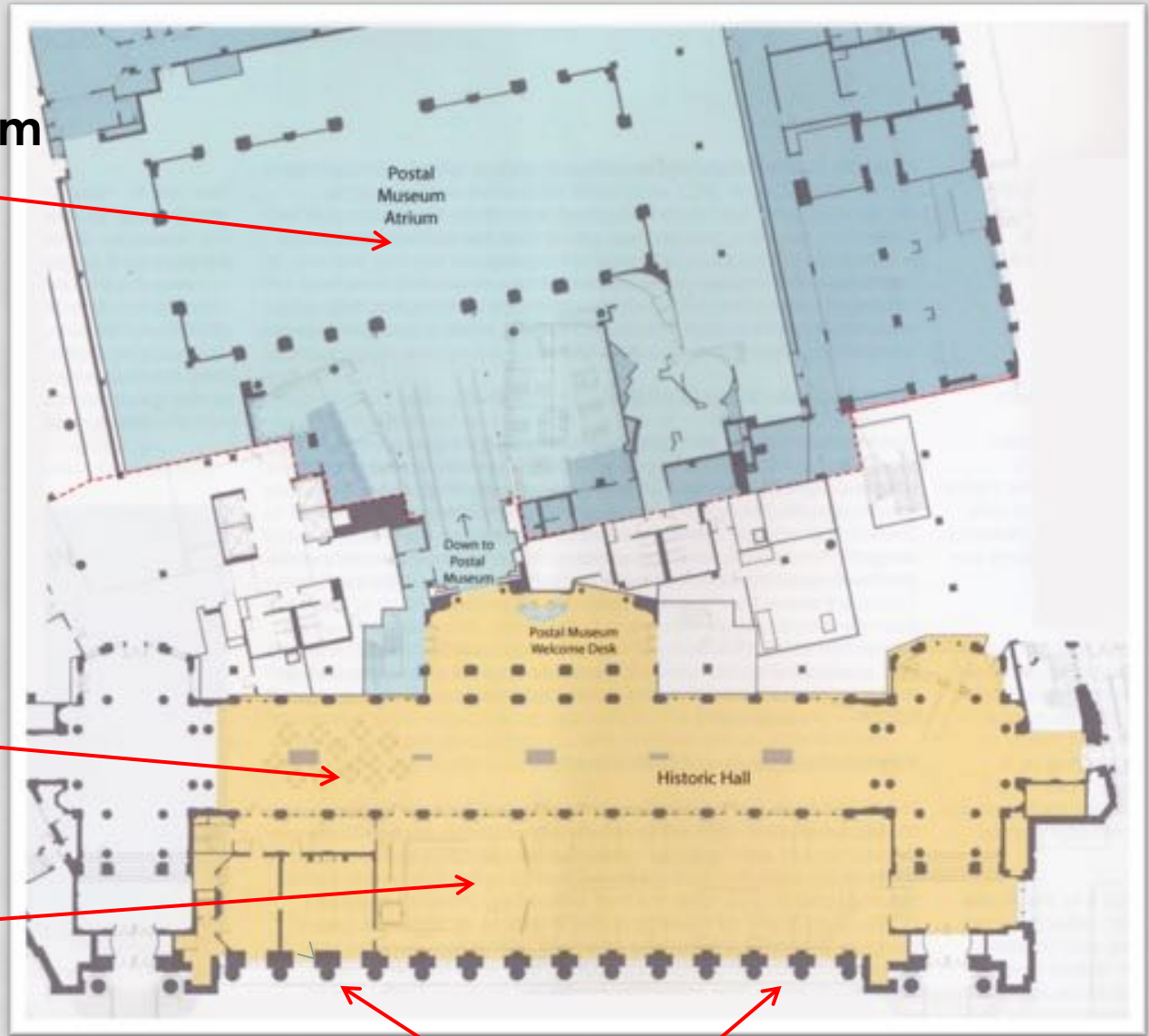
**Historic Lobby  
Upper level**



**New Galleries**



**Historic Windows**



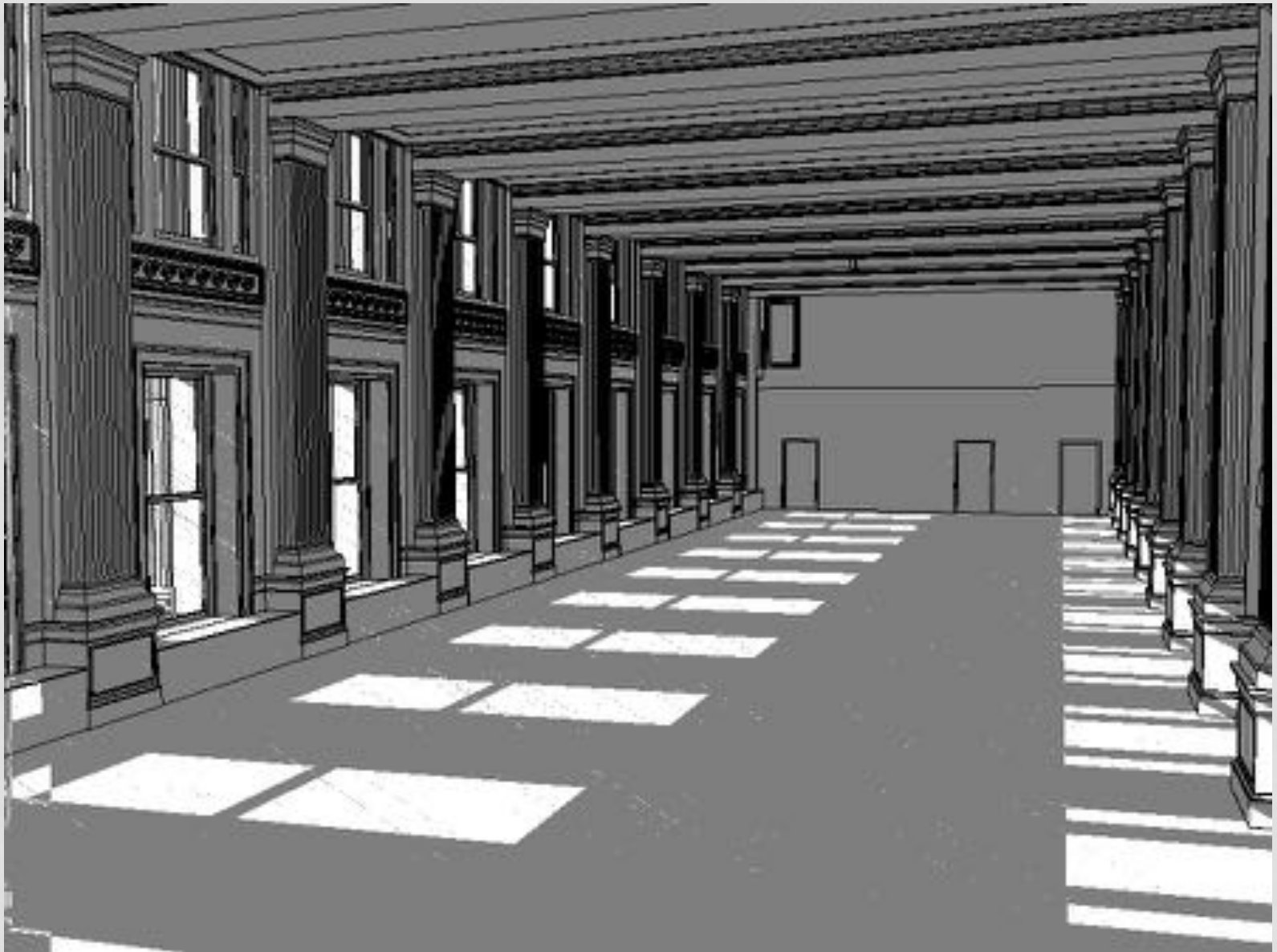
**“...any connection with outdoors contributes to prolonged visitor stays.”**  
(Angela Matchica 2013)





# HISTORIC WINDOWS

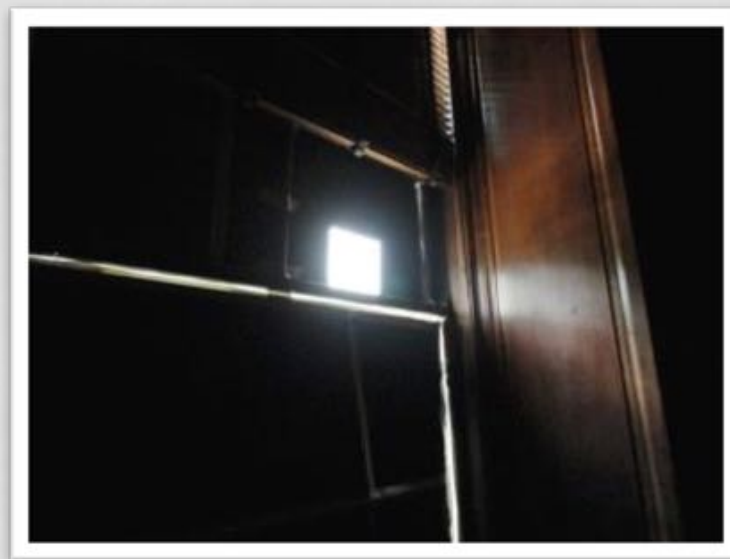




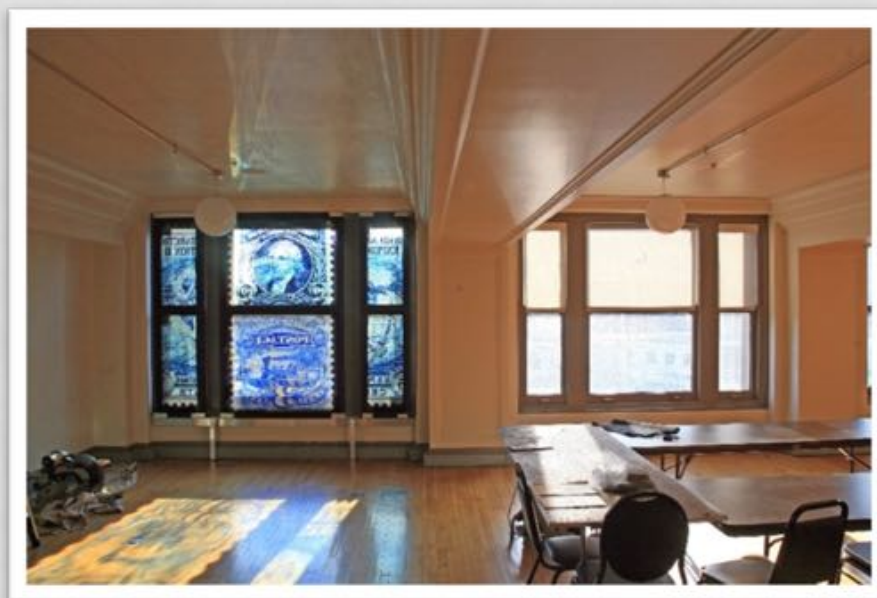
Winter Solstice at noon



Sample window



Small aperture for testing



Mock up for historic preservation approval

# WINDOWS INTO AMERICA



# POSTMASTER SUITE GALLERY

Testing denser Mecho shade



Historic DC Postmaster Suite



# GALLERY SPECIFIC SOLUTIONS

Historic Lobby



Entrance to Gems Gallery



# GEMS

## *of American Philately*

*Like gems of the mineral world, these stamps  
and pieces of mail are rare and highly valued.*



They tell stories about important moments in U.S. history, from the Stamp Act and the American Revolution to the Apollo 15 Moon landing. Each one conveys significant information about stamp design and production, including one of the most famous stamp printing errors ever made.

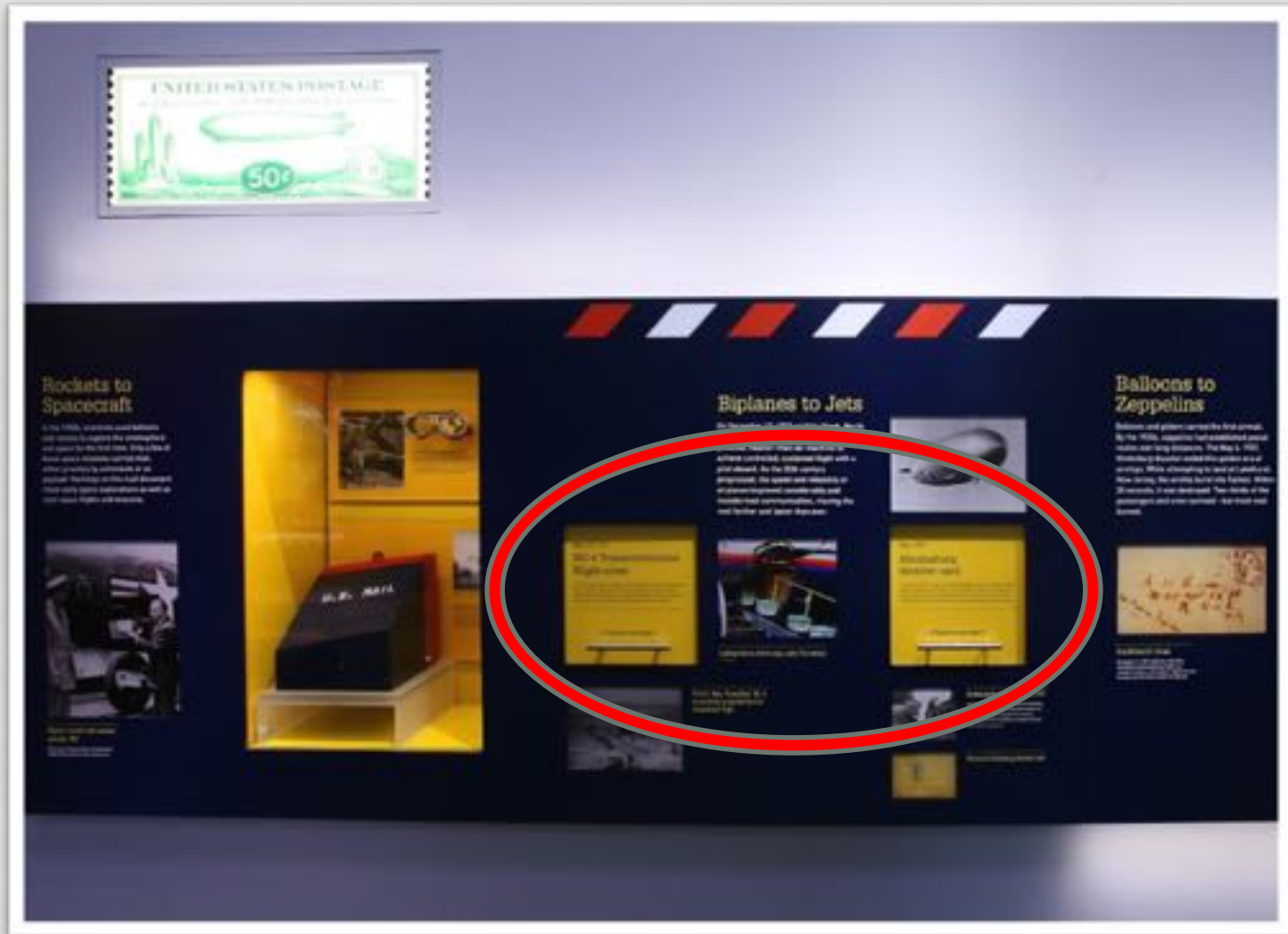


# MAIL MARKS HISTORY





# LIFT UP CASES



from January to July, when heavy ice is common, and the International Ice Patrol monitors ice in the shipping lanes.



## THE WRECK OF THE TITANIC

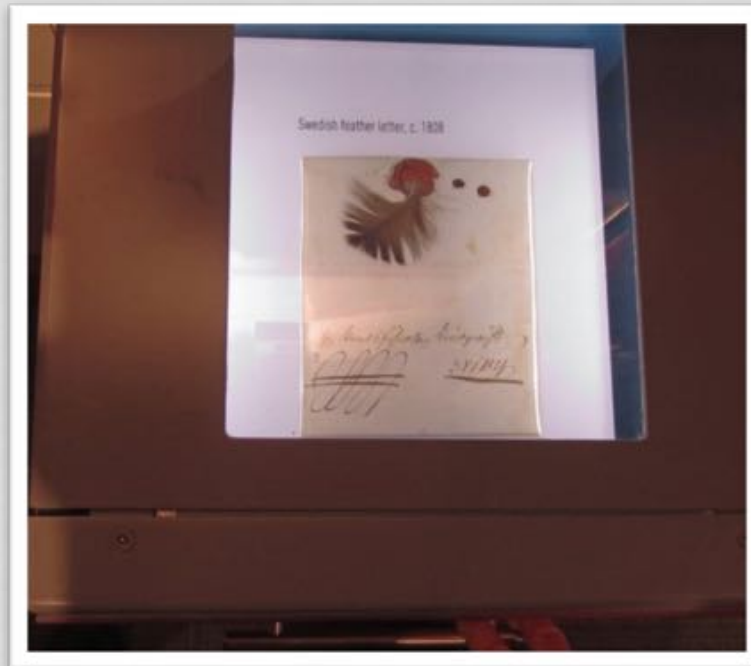


### *Wreck of the Titanic*™ sheet music

Before radio, middle-class households entertained themselves with a piano. Titanic sheet music appeared within days of the sinking and remained in print for years.



Pullout  
Drawers



Swedish  
Feather  
Letter

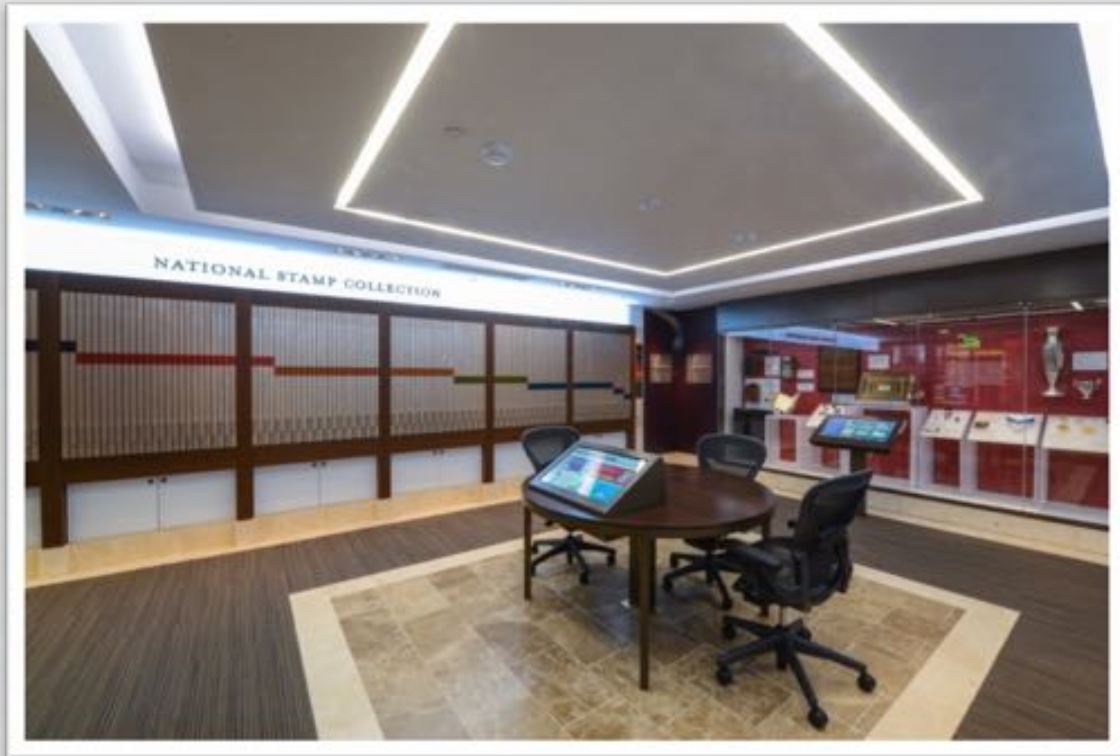
# SMITHSONIAN ARTS AND INDUSTRY BUILDING 1900'S

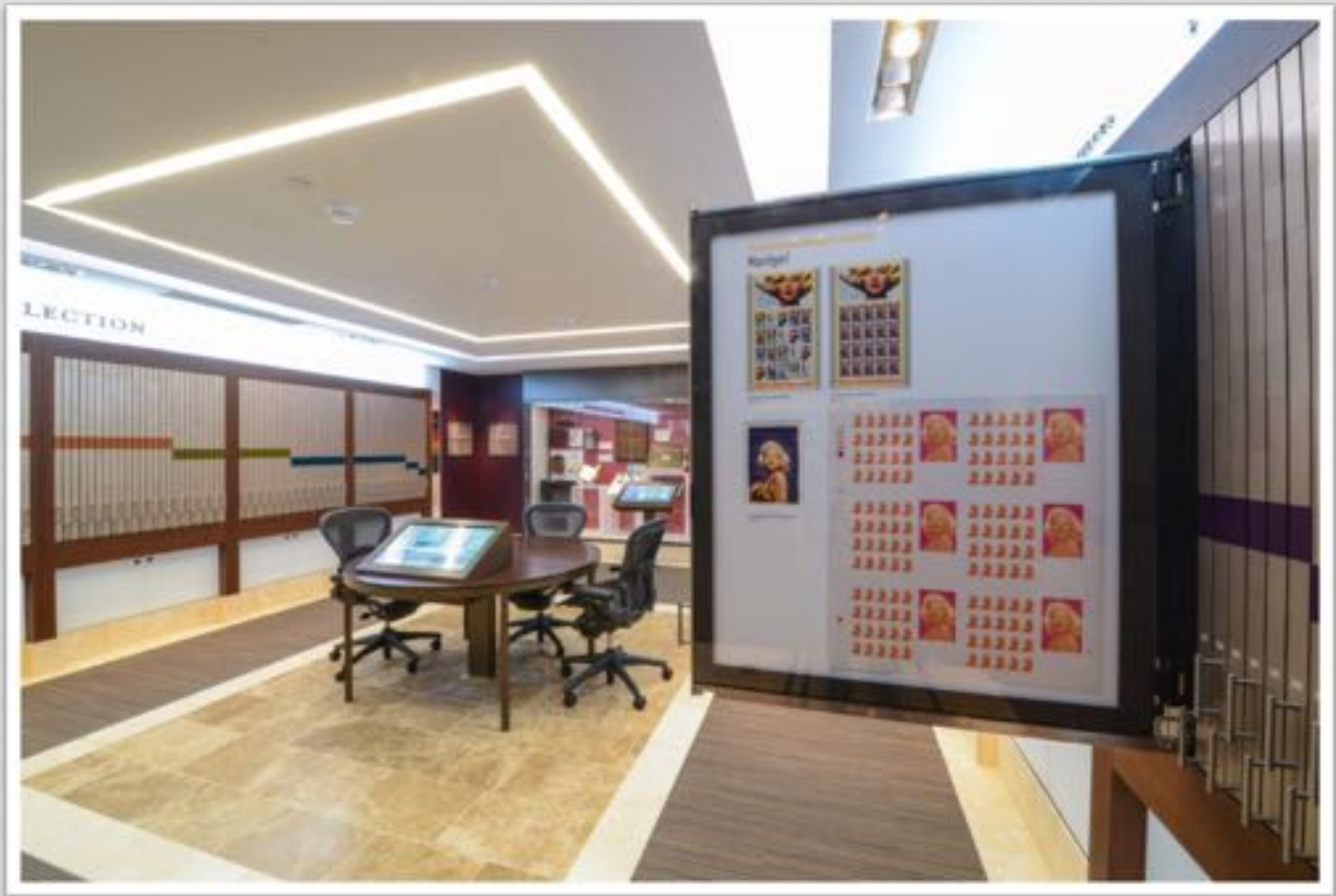


# GOPPION IN MILAN, ITALY



# NATIONAL STAMP SALON





'It could easily be a glorious Pharaonic tomb, stocked with all the sustenance a philatelist might require for the afterlife.'  
(Rothstein 2013)

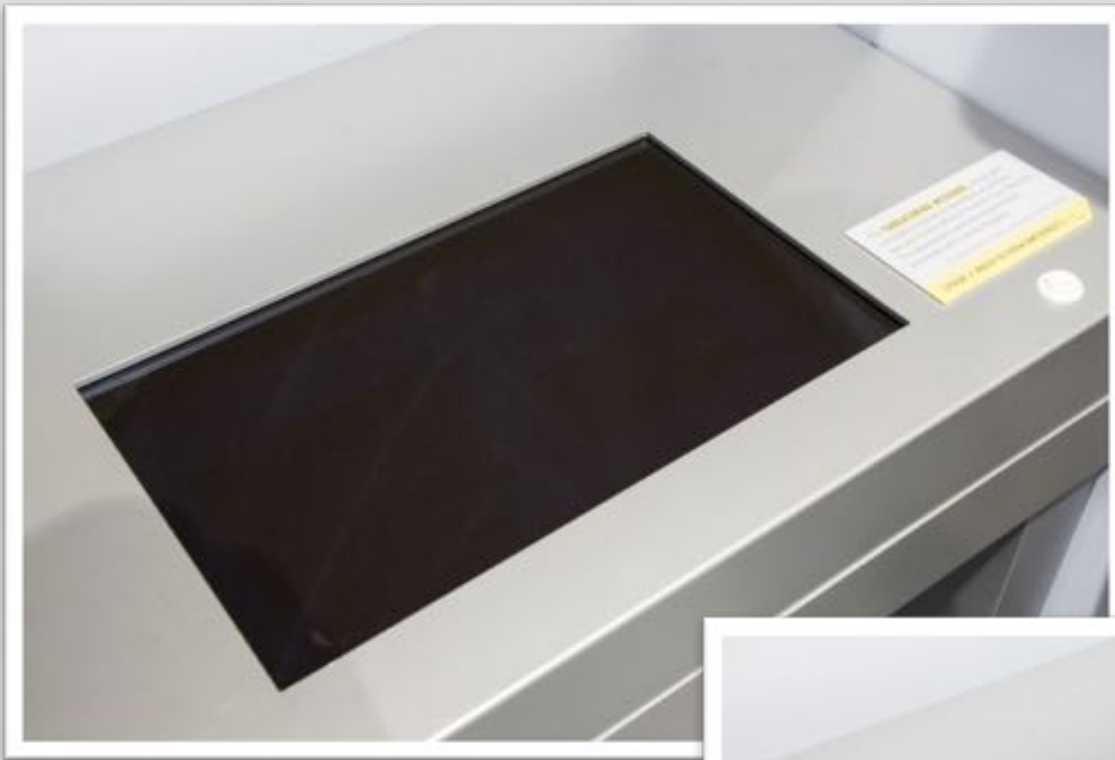
# OBJECT LEVEL SOLUTION



SmartGlass Technology



# ANTHRAX LETTERS



Senator Daschle  
Letter & cover

On loan from the FBI



# BEHIND THE BADGE EXHIBIT





I would also like to thank the great team that worked together  
to create the

**William H. Gross Stamp Gallery**

Project Manager – Glen Hopkins

Architects – Cho Benn Holback

Exhibit Designers – Gallagher and Associates

Fabrication – Design and Production

**And of course the ENTIRE NPM Staff**

---

Published article available on Academia. Edu

[https://www.academia.edu/27715086/JAIC\\_Lighten\\_Up\\_1\\_Article.pdf?](https://www.academia.edu/27715086/JAIC_Lighten_Up_1_Article.pdf?)