

CRATE REUSE PROGRAM

GREG GAHAGAN
SHIP/ART
SAN FRANCISCO
2014

Used Museum Crates

50-75



OVERVIEW

What does it take ?

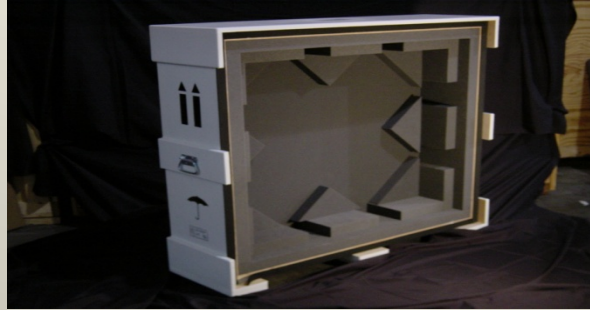
- 5 years in the making
 - Several failed attempts
 - It is not easy to make it work
 - Staff buy in
 - Clients open to the concept
 - Good inventory
 - Available Space
 - Consistent types of works on routine basis
- Only for museum quality crates
 - Lesser quality crates cost too much to store vs. their value
 - Cheaper to build new ones vs. store them
- Average inventory of 50-75 crates
 - Started out with 50 crates, but as the program gained momentum, we started running out of crates!

OVERVIEW

- Stored in non-climate
 - Cheaper Storage Costs
- Average crate size = 50 X 18 X 50 LWH
 - We store only crates for 2D works
 - covers medium to small works with inner box or travel frame
- Average rate of turnover = 1.5 years
- 2 week acclimation period
 - test shows this allows time to gain the proper r values
- Average venues per refit = 1.5
 - we see a lot of single venue loans
- Projected amount of times to reuse a crate in 5 years = 3 times

COST BENEFIT ANALYSIS

- Subject crate = 55 X 18 X 55 LWH



- Storage for 1.5 years non climate = \$487
- Average cost to refit material and labor = \$150
- Total cost for a refit that has been stored 1.5 years = \$637
- Average cost for a new crate = \$600-800

REFIT PROCEDURE

- Leave in existing thermal insulation
- Leave in existing shock insulation when possible. Supplement or reduce for proper cushioning curves
- New inner boxes
- New travel frames
- Remove all labels
- Refresh any hardware as needed
- Revarnish if needed
- 2 week acclimation

GREEN CREDITS PROGRAM

- Overall goal:

This program has been established to create a financial incentive to reduce the carbon footprint of the museums lending program.

- Terms:

It is hereby agreed that Ship/Art can provide a reused/refit crate for outgoing loans when it meets the following conditions:

- Crate must be in solid good limited use condition. All previous stickers and markings are to be removed and varnish reapplied to the exterior when necessary.
- Interior foam to be removed and refit custom to the new object as needed.
- Exterior size of crate must not vary more than 4" in any direction from what a new crate would be.
- All nut and bolt plates as well as gaskets to be replaced as necessary to be in as new condition.
- Crate should appear as new as if just built.

- Financial incentive:

Ship/Art will provide Green Credits in the amount of \$100 for each crate that is refit on this program. These Green Credits can be used for any goods and services normally provided by Ship/Art. Such as pickup, delivery, installation, supplies, shuttle transport etc. To redeem your Green Credits please coordinate with Greg Gahagan.

INCENTIVES FOR CLIENTS

- Green credits
- Discounted rates
- No cost for disposal*
- Quick turnaround
- Emergency situations
- Credit for Green Programs

INCENTIVES FOR SHIP/ART

- If it isn't making you money why do it?
- It is the right thing to do
- Flexibility in timing for last minute projects
- Allows a competitive advantage
- Allows clients to be green
- Changes attitudes in people and in construction
- Allows the same or better crates at the same price or less

Other variants

- The National Gallery London
- Artex
- ICEFAT
- Artex Vienna
- Lonely Crates.com

If they can do it maybe you can too!

Artex Vienna- compactor racks for empty crates



LONELY CRATES



[SEARCH CRATES](#)

[SELL CRATES](#)

[HOW IT WORKS](#)

[RESOURCES](#)

[BLOG](#)

[SIGN IN](#)



EMBRACE EMPTINESS.

LONELY CRATES is your online marketplace for used shipping crates, specializing in crates from and for the art world.

FIND A CRATE

SIZE OF OBJECT TO SHIP

in inches

 × ×

Height

Width

Depth

YOUR LOCATION

City, State or Zip Code

[SEARCH CRATES](#)

[BROWSE ALL](#)

THANK YOU